

Straits Settlements to World
Cities: The urban and economic
development of the Straits of
Malacca

by

David A. Lanegran
Macalester College Geography
Department

Earliest urbanization

- Hindu Warlords established trading posts that garnered great profits by the beginning of 15th century.
- 1405 Prince Cheng-Ho visits Malacca and offers protection of Imperial Court
- 1420 Ruler of Malacca converted to Islam and became the focus of the spice trade the great force of early globalization
- “He who is lord in Malacca has Venice by the throat.”

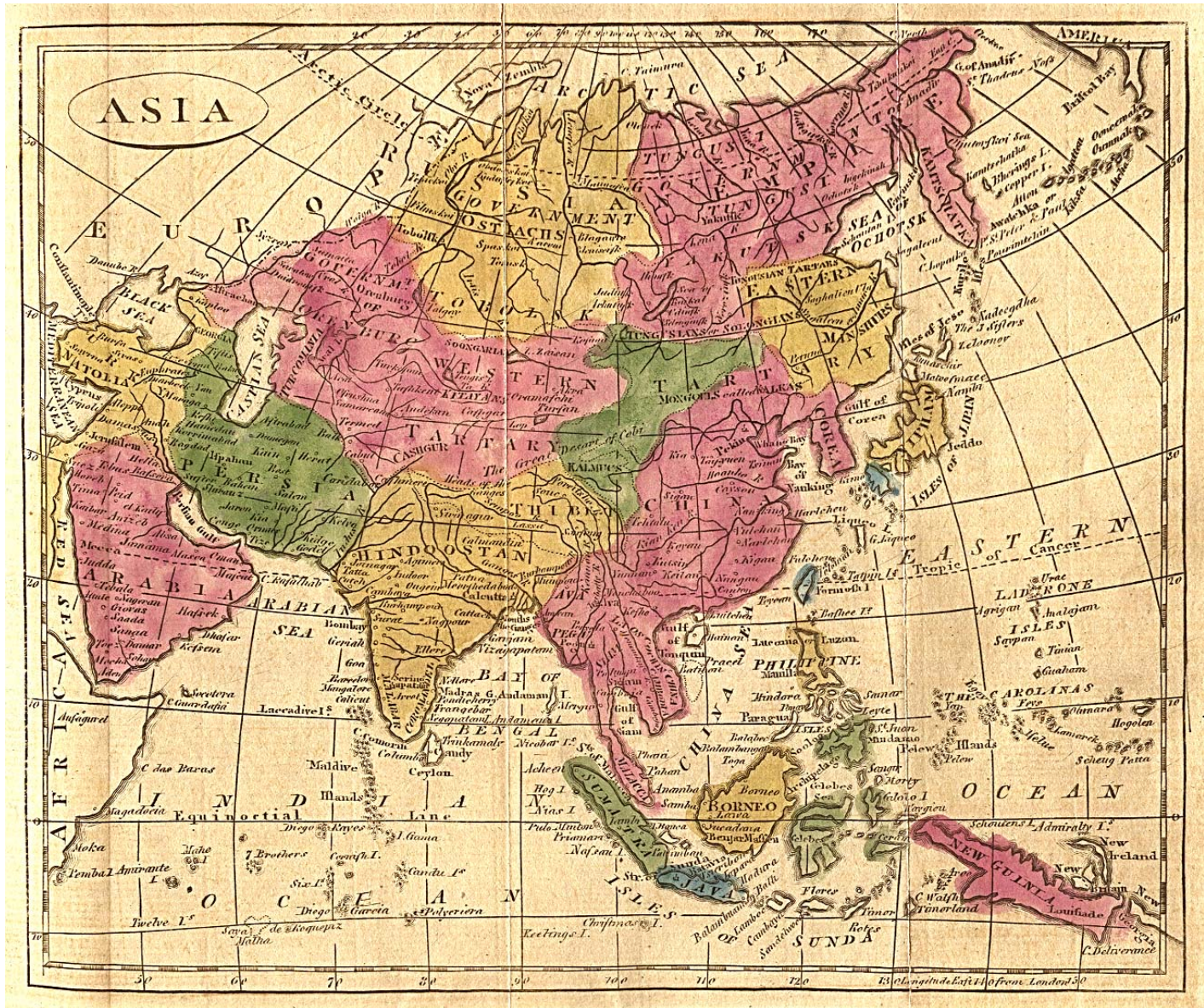
European Struggle for trade

- Duke of Albuquerque conquered Malacca in retaliation for Sultan's rebuff of Portuguese traders in 1509
- Portuguese trading post was avoided by Islamic traders who then focused on Damah in Java
- Dutch replaced Portuguese in Malacca in 1624

Dutch replace Portuguese

- Dutch take over sultanates of spice islands
- They establish bases on Java and Batavia became the focus of their trade.
- Malacca was rebuilt but did not maintain its central position in the spice trade or trade with China

Asia 1808

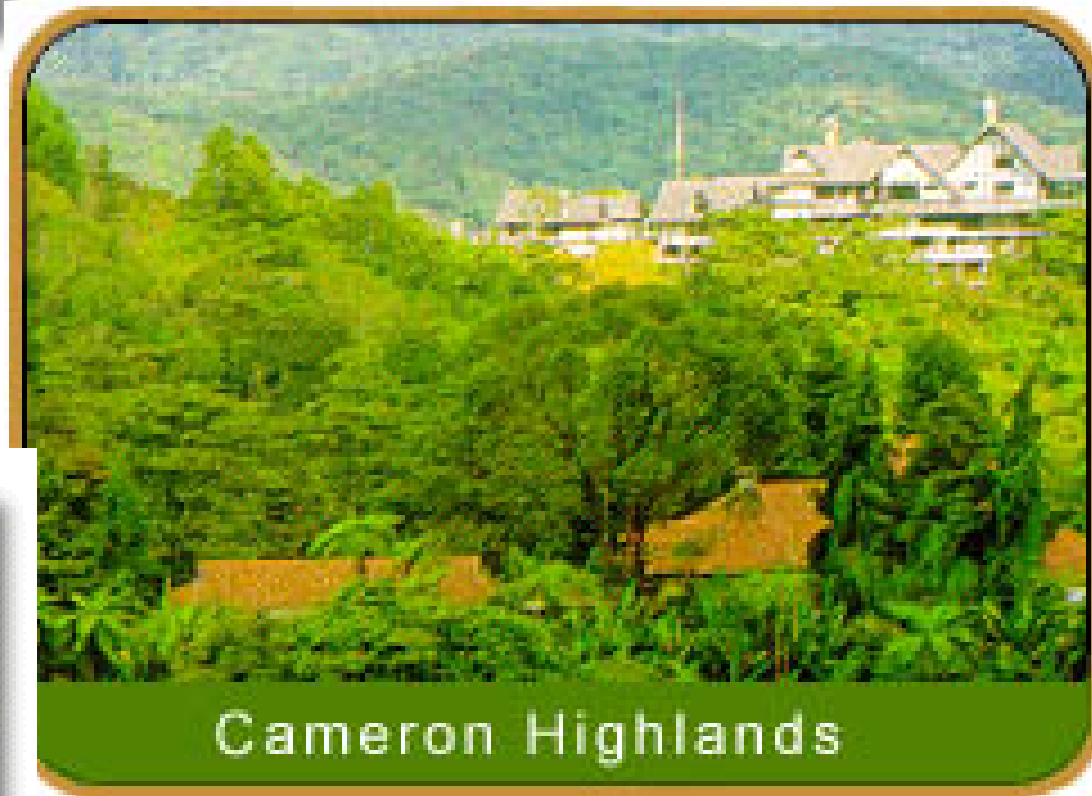


East India Co. and George Town

- As the third power in the region the East India Co. focused on the trade with China and established posts and re-vitalizing bases on islands off the Coasts of Malaysia and Northern Borneo
- George Town on the Island of Penang was established by Francis Light in 1786
- Free trade policy caused boom and population reached 10,000 by 1800.



A 19th-century portrait of British Malacca



Cameron Highlands



The Union Jack is raised over Penang

Napoleonic War in Asia

- British Occupied Dutch Territories in Southeast Asia during Napoleonic Wars 1795-1814.
- Although British East India protested Dutch Colonial power was reinstalled in the East Indies after the wars ended.
- In 1825 Malacca was traded to British for modern Bengkulu a port in Sumatra

Singapore

- Arthur Raffles of the East India Company used the uncertainty at the end of the war to lease an island further east and established Singapore
- After some bluffing the Dutch at Batavia agreed that the line of imperial influence will be drawn down the middle of the straits of Malacca.

The Straits Settlements

- In 1826 the three ports were combined into an administrative unit of the Presidency but in 1830 they were transferred to Bengal and ruled from Calcutta by the Company.
- The company caused the traders at Malacca to move to George Town.
- Singapore soon became the primary city.
- In 1867 they became Crown Colonies

Malay Sultanates

- The other Sultanates on the Peninsula and in North Borneo were controlled by the English Residency Policy
- By the end of the century they were organized into the Federated Malay States
- In 1909 they were joined by a group of states that had been under Thai suzerainty and ruled from Singapore



ASIA

SCALES.
Scale 1:1,000,000 = 1 inch.
Scale 1:1,600,000 = 1 inch.



europäische Besitzungen
 Spanische
 Portugiesische
 Französische
 Britische
 Niederländische

orte der Residentchaften / Residen-
 Niederländisch Indien sind untertri-
 o diese nicht nach ersteren benannt
 sind ihre Namen hier eingeschrieben
 gekürzt, wie: Tp. Tapanuli, P.O. Padanger
 ad, E.U. Padanger Unterland, W.K. Westküste,
 Süd- und Ostküste von Borneo, K. Kadu (Java).
 Kürzungen

C. Cap, C. Canal, F. Fort, G. (G) vorn: Gunung,
 Burg, Rfa. Hafen, L. Insel, I. Inseln, M. Meerbusen,

BRITISH MALAYA

SCALE 1 : 8,232,000

1 Inch = 130 Statute Miles

1 Centimeter = 82.3 Kilometers

Statute Miles

50 25 0 50 100 150

Kilometers

50 25 0 100 200

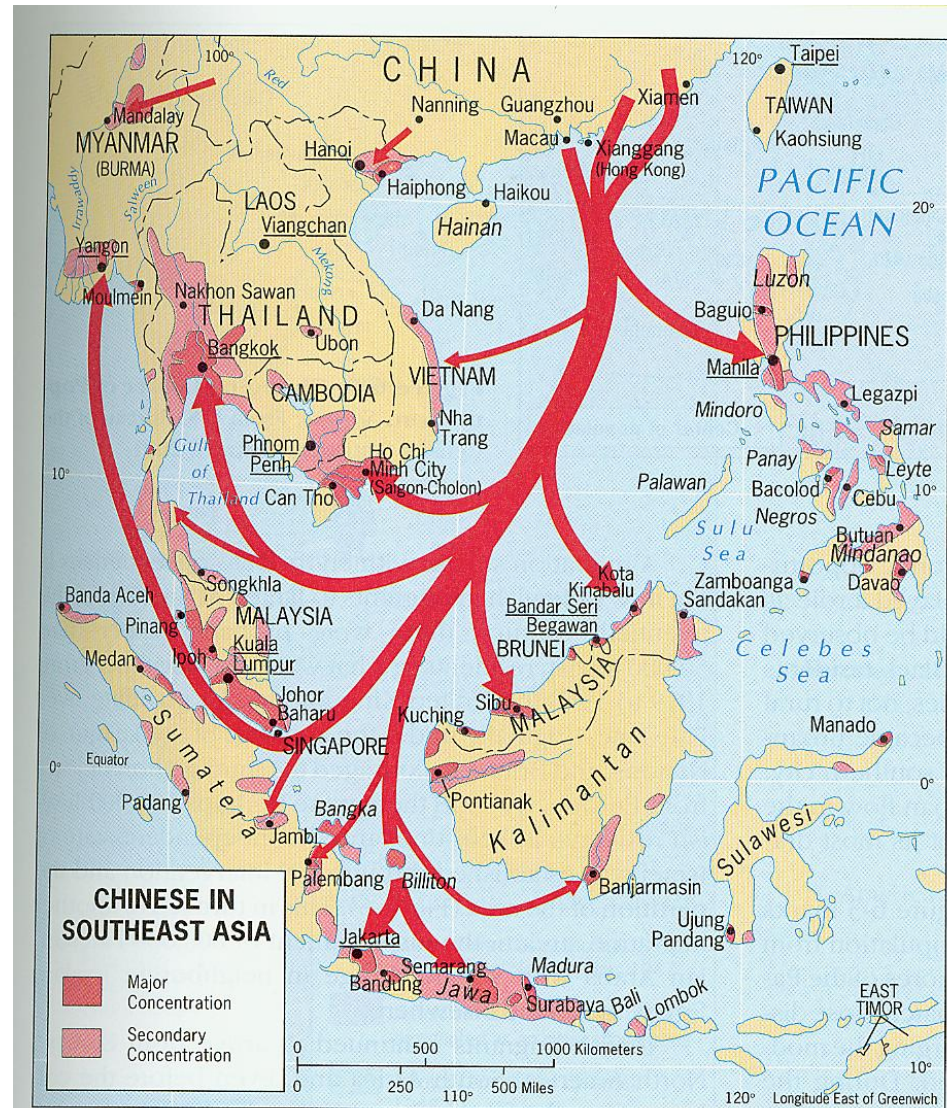
F. - Federated Malay States

N.F. - Non Federated Malay States

S.S. - Straits Settlements

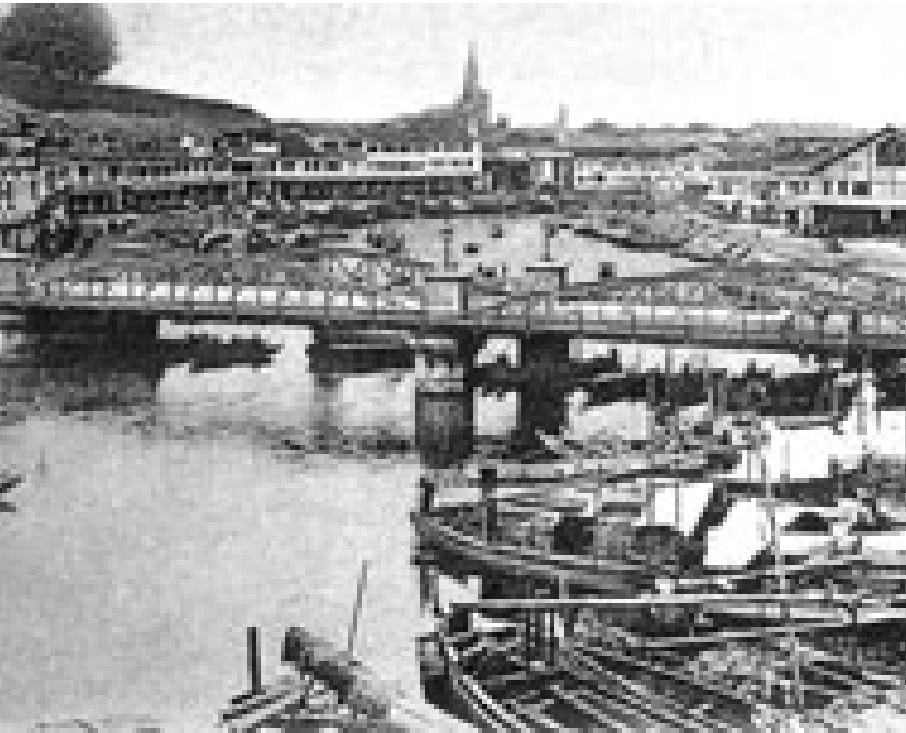


Chinese Immigration into area was encouraged by British and Dutch





Singapore as colonial trading Post



Commercial development of Singapore River





Georgetown

Malacca

Medan

STRAITS SETTLEMENTS

MALAY

KUALA LUMPUR

Malacca

SETTLERS

SINGAPORE

INDONESIA

Trengganu

STATES

Lipis

KUALA LUMPUR

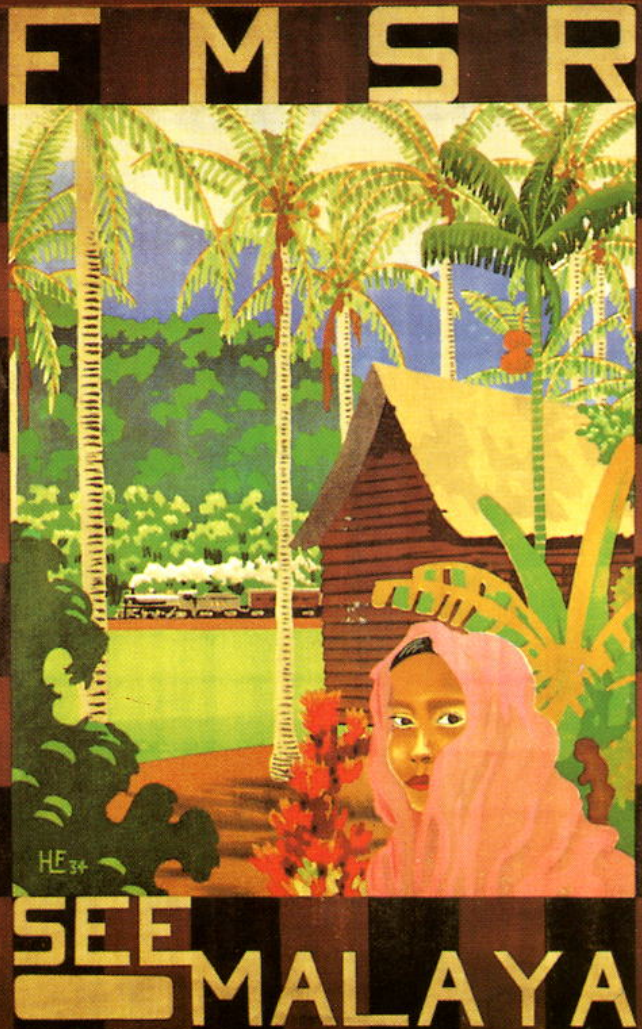
RIO

SINGAPORE

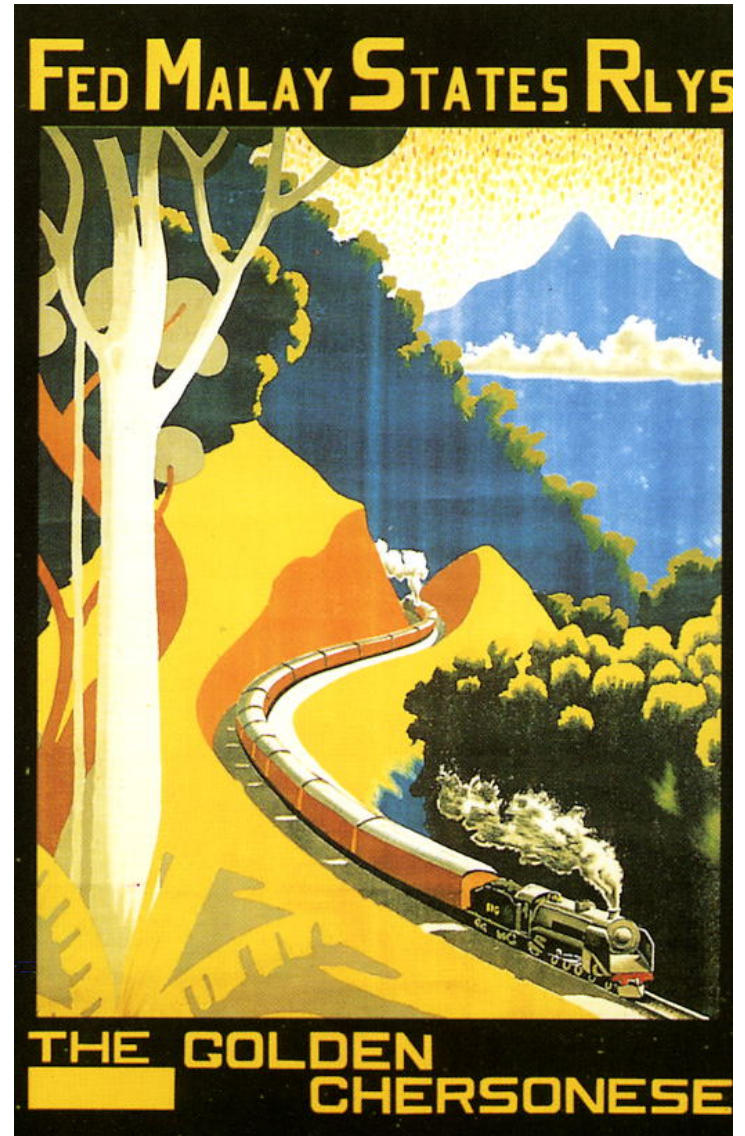
Colonial Economic Development

- British focus economic development of their area on
 - Mining of Tin
 - Plantations
 - Rubber
 - Oil palm
 - Trade between major parts of the world
 - tourism

Steamship and railroad lines encouraged luxury tourism



Special trains and hotels





plantations were developed in response to world demand for tropical crops



Small rubber farms exist but are gradually going out of business



Palm oil replaced rubber as primary plantation crop when synthetic rubber became commercial viable







Independent Singapore set out to modernize as quickly as possible



"Emporium and . . . pride of the East." Thus Sir Stamford Raffles envisioned Singapore's future shortly after he founded the city in 1819. Others

predicted disaster, but geography favored the strategic island with its magnificent deepwater port at the crossroads of Southeast Asia's sea lanes.



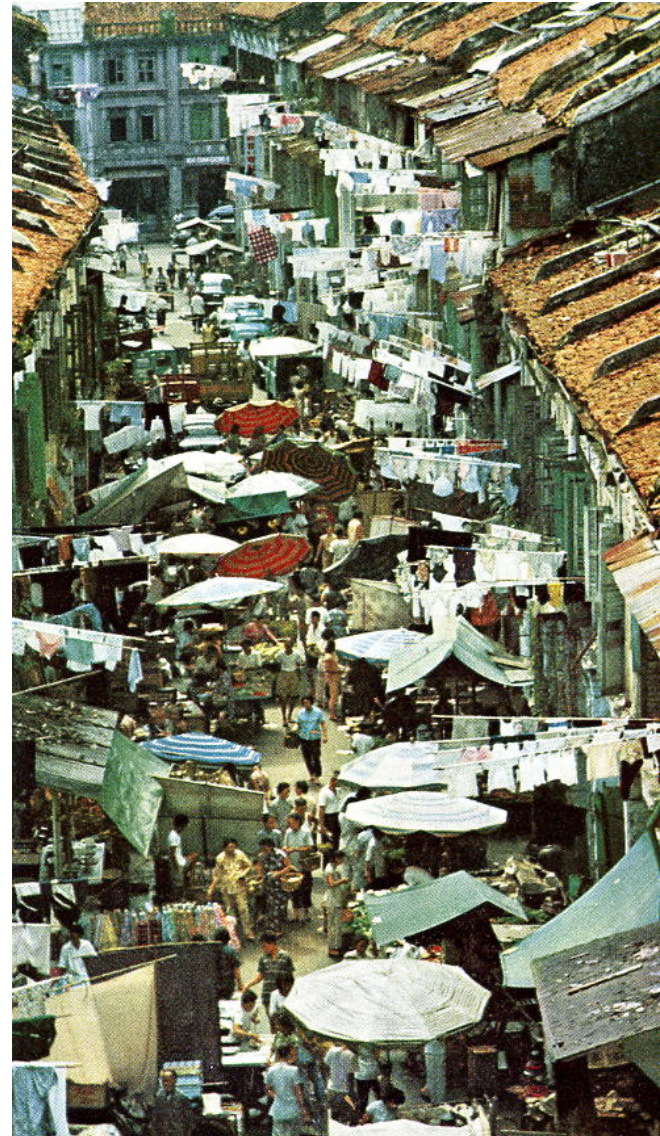
Chinese lightermen maneuver their motorized *tongkangs* from Singapore River's crowded quay in the early morning, starting a daylong stream of

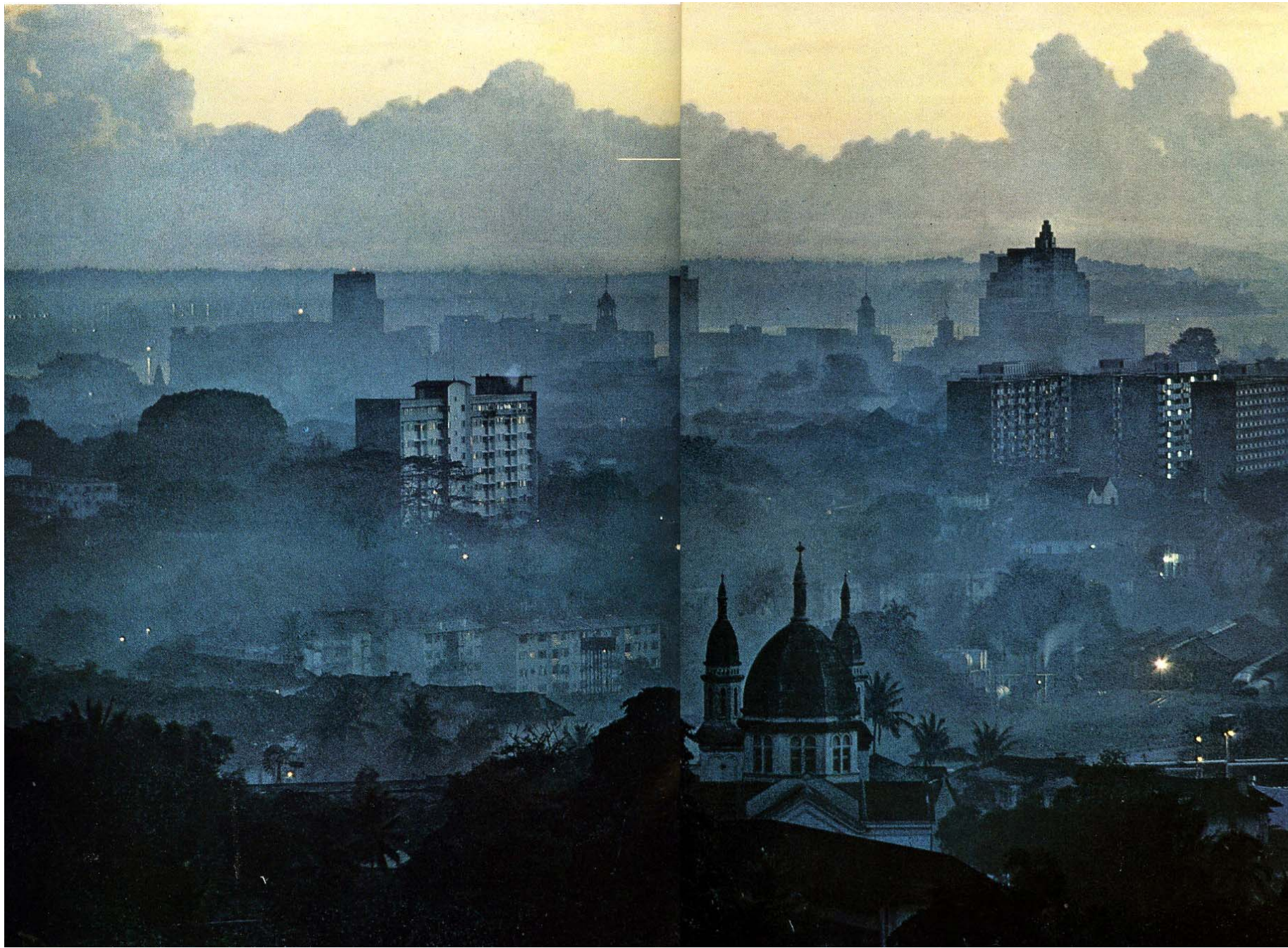
traffic between wharves and ships anchored in the roads. At nightfall the city's glitter paints the sky and sheltered harbor.

PHOTOGRAPHS © NATIONAL GEOGRAPHIC SOCIETY



Commercial streets 1966



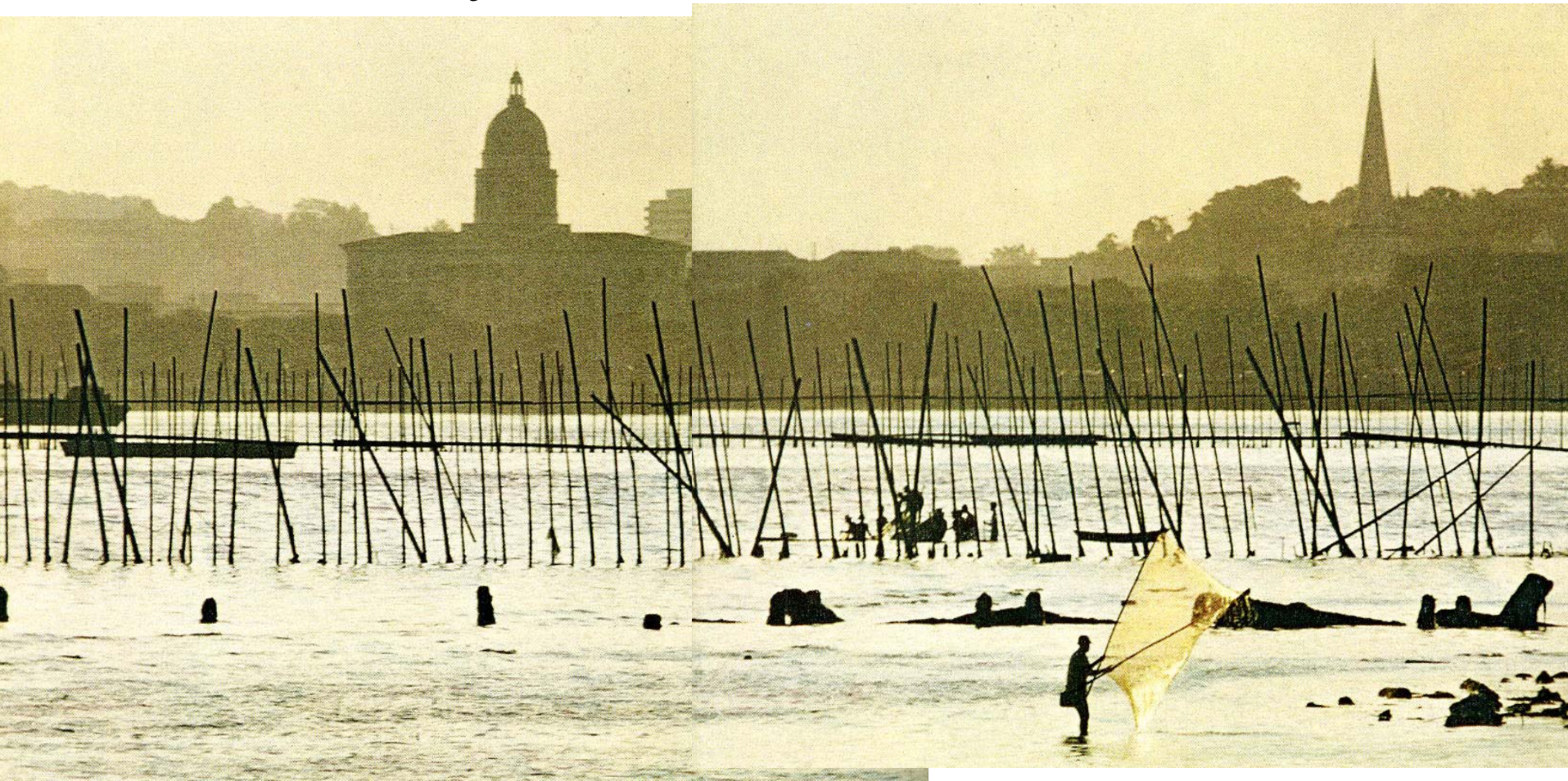




New towns built to replace traditional housing without services



Pre-modern waterfront used by Malay fishermen



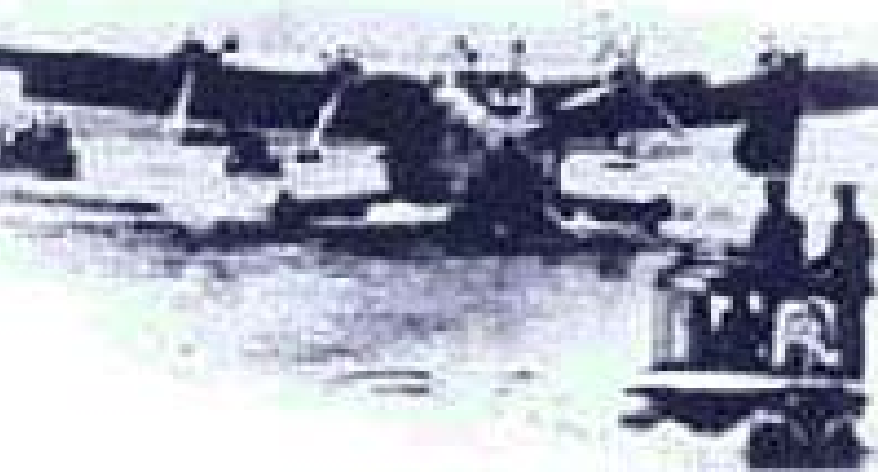
- Singapore's port in the 1960s was labor Intensive and in need of Modernization

Singapore's leaders determined to produce steel needed to carry out the building program

New construction used to ease economic impact of departure British Militarily



A World class airport was built in 1975 replacing older seaplane site.



Airport has direct connection to Mass transit system.



STATE OF
JOHOR
MALAYSIA

STATE OF
JOHOR
MALAYSIA



Singapore Island

-  MRT Station
-  North-South MRT line
-  East-West MRT line
-  Expressway
-  Main Road



Singapore CBD from Sea







Singapore has one of the busiest container ports in the world



Strong central government has produced highly planned city



Singapore is one of the world's financial and business centers



Congestion has prompted a special toll system for access to CBD



Little India is one of the city's ethnic quarters.



A remnant of elite European district remains



Artificial beaches have been created to amenities



Renewal has created a demand for restored and re-purposed shophouses



SINGAPORE MRT



SINGAPORE MRT ROUTES

Northbound (Marina Bay to Jurong East)

Southbound (Jurong East to Marina Bay)

Eastbound (Boon Lay to Pasir Ris)

Westbound (Pasir Ris to Boon Lay)



Bedok New town houses a range of incomes and connected via MRT



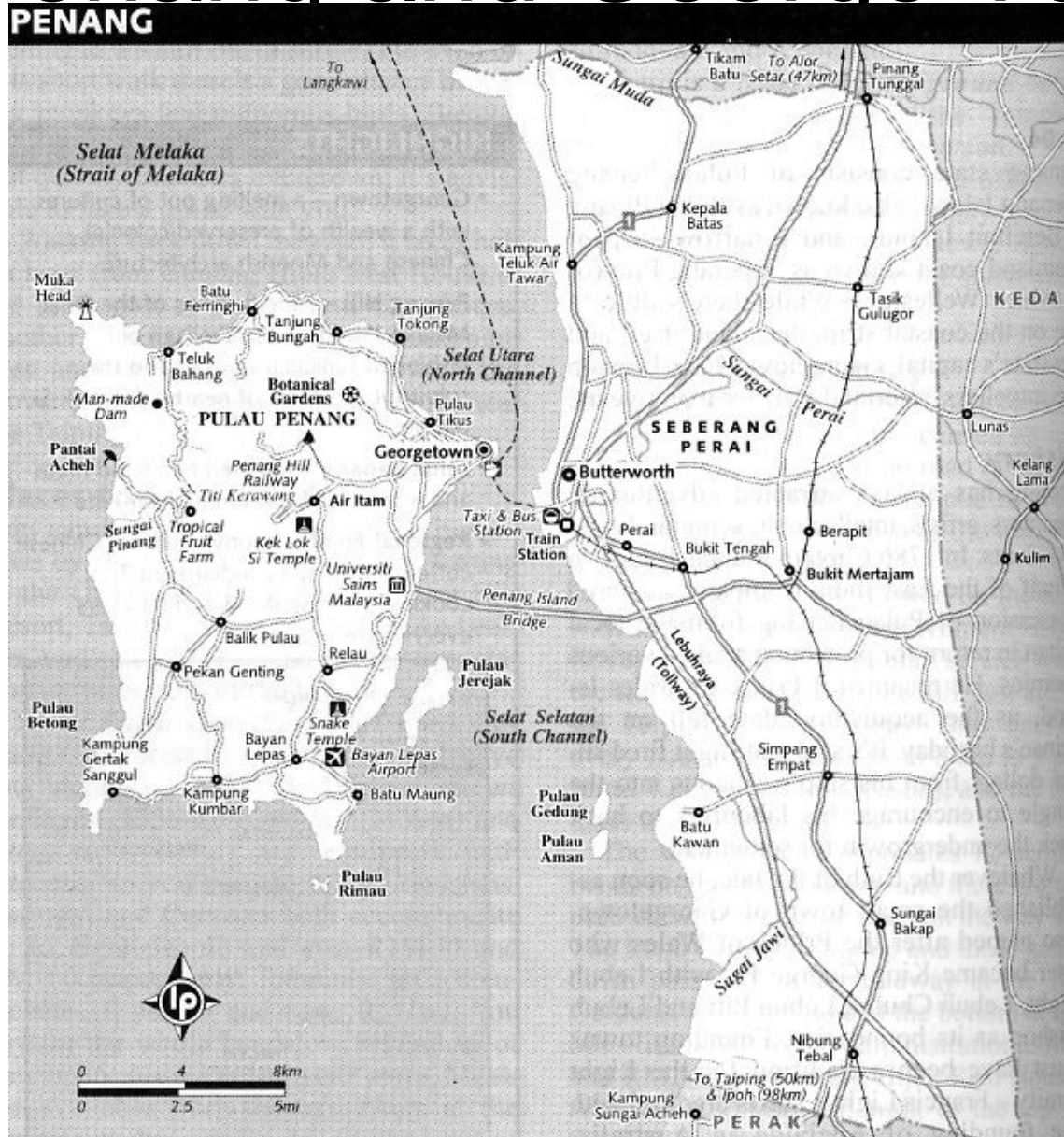
Commercial district contains a wide variety of shops for visitors and locals



Despite economic slow down in Asia land development continues



Penang and George Town



Penang



Planning in Penang

- Sir Frances Light laid out a commercial district near wharf. Ethnic groups created their own communities mixing only in the commercial streets. No general plan for infra structure existed
- In 1921 Charles Read brought the garden city concepts of Ebenezer Howard to Penang. His official zoning plan for the city was not rigorously enforced

Planning cont.

- In 1971 a new plan for the city center was adopted which created calling for three areas in the old city to be redeveloped and a large area of the shop houses and elite mansions would be preserved. In addition a new capital would be built to replace the old colonial office space

Capital district

- District would contain new offices restaurants hotels, shopping centers and parking.
- This was the first large scale redevelopment project undertaken in Malaysia

Justification for project

- Revitalize business district
- Optimize land uses in center
- Create new business opportunities in accordance with New Economic Policy of national government
- Provide income for state
- Create much needed office space for government agencies
- Create stylish housing for new elite

- The first phase is a spectacular 65 storey tower rising from a four storey base with an adjacent 19 storey hotel with 460 rooms.
- The complex contains 2 million square feet of office space
- Public space under a dome, movie theater and parking have also been built
- Hoped for large scale private investment has not occurred.
- Lack of private investment has hindered preservation elements of plan

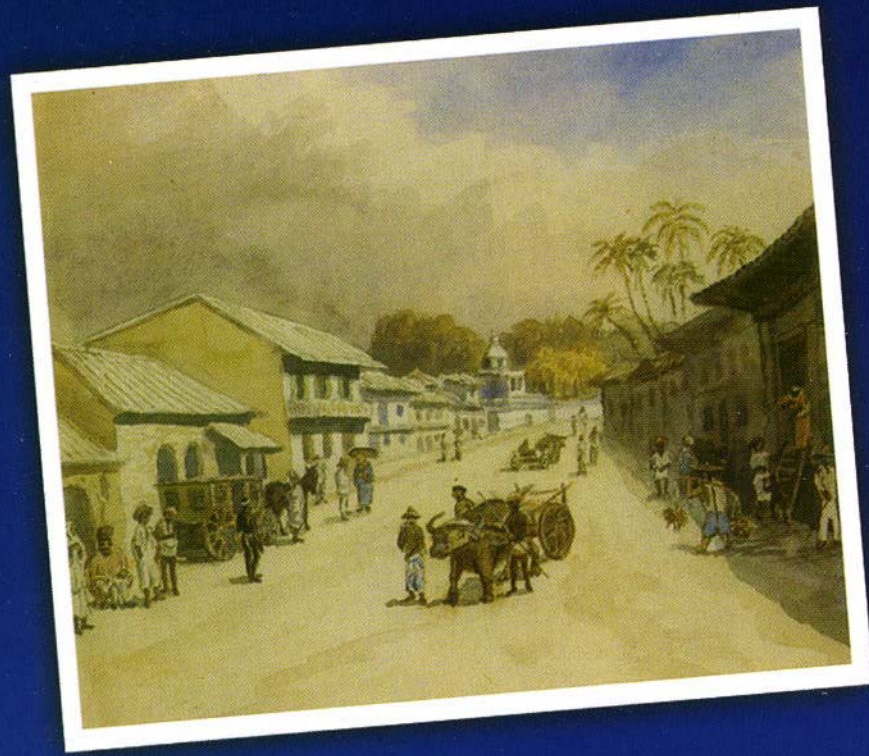
Government Center



Conservation district

- The second key aspect of plan has not been widely accepted
- Penang Heritage Trust a non-profit corporation has worked hard to promote cultural tourism and historic preservation.
- None the less landlords continue to seek permission to renovate sites in the district.

PENANG HERITAGE TRUST
ANNUAL REPORT



Fort Cornwallis and colonial core of George Town remain as parks



Penang's historic district consists mainly of shophouse developments and is a world heritage site



Places of worship and community buildings have been preserved by various cultural groups



buildings such as the
Cheong Fatt Tze mansion have
been preserved



The third part of the plan was a free trade zone

- Penang George town economic development was based on Free trade zone where products were assembled from imported parts and then exported without the need to pay tariffs.
- The process was based on low cost efficient labor.

European Corporations built factories for the assemble of electronic appliances



The prosperity of the trade zone resulted in new housing and services in the New Town





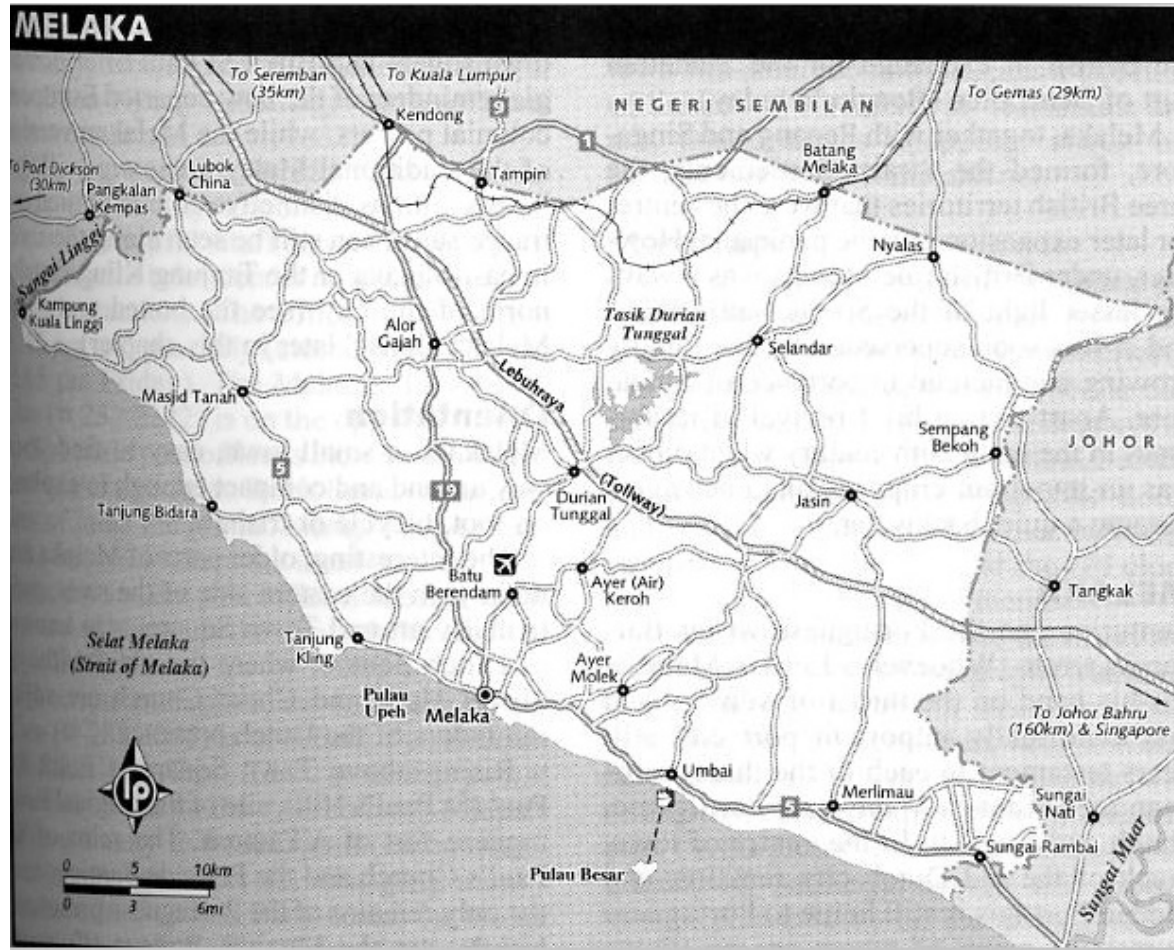
Gurney Street has become a district for new malls and outdoor food stalls



A variety of recreational
landscapes have been developed
for investors and travelers



State of Maleka



Cultural tourism in Malacca

- Lack of commercial development has lead to an economic development plan based on marketing of
 - historic landscape
 - Crafts
 - Waterfront
 - Family recreation
- In the 1990s Melaka was declared Malaysia's Historic City

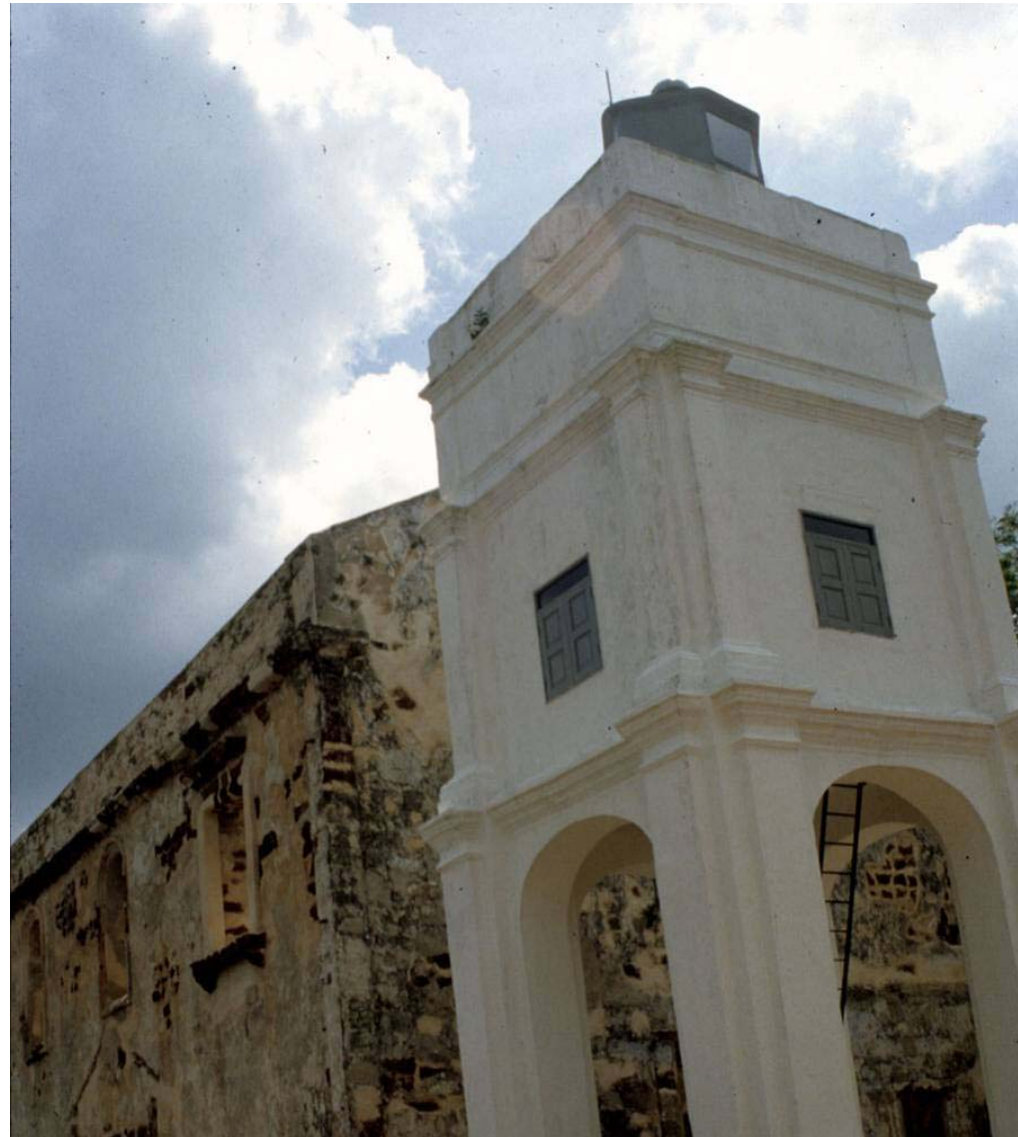
some of the oldest landscape along
the river mouth has been saved



Colonial era main street



Dutch Churches



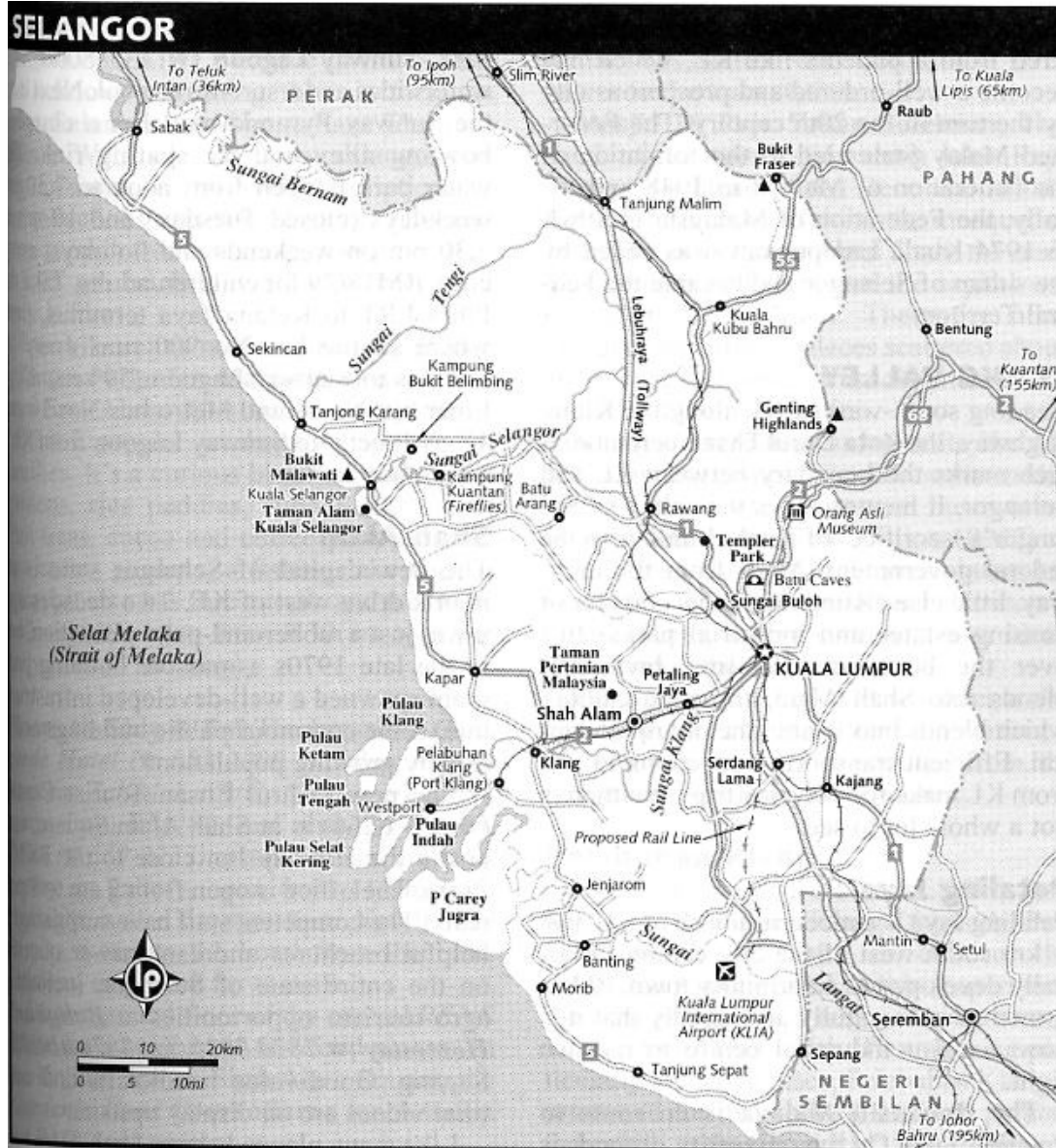
Resort Condominiums have been added at new waterfront



Kuala Lumpur – Rival colony/ rival World City



Kuala Lumpur and Port Klang



Inland Rival of Straits Settlements

- This inland city with tributary port is a classic example of how the expanding European urban system penetrated the resource frontiers in all parts of the world.
- In 1857 prospectors discovered rich tin deposits in Am pang. Their camp grew into Kuala Lumpur, a rough raw mining boomtown.

Early developments

- The Klang river valley provided a route for a wagon road to the sea.
- In 1886 rails replaced the wagon road
- The Sultan appointed Yap Ah Loy to take charge of the Chinese miners. Yap is credited with founding KL
- The city became the Sultan's capital in 1880s and in 1896 it became the capital of the Federated Malaysia States and Singapore's Chief Rival

KL has traditional colonial core





KL Aspiring world City

- 1.5 million
- Developed around mine sites similarly to British Black country –now suffers sprawl
- Finance and government in city center; housing at pit sites
- Industry attracted to rail line in Klang Valley
- Port Klang aspires to compete with super port at Singapore

- Planners moved city center from Colonial padang area and rail stations further east into the 19th century mansion district and created a section of office building hotels and shops now called the Golden Triangle.
- This plan resulted in over three dozen modern and post modern skyscrapers and the city's greatest concentration of fine hotels shops and restaurants.
- Center includes Petronas Twin Towers, among the world's tallest buildings

Petronas Twin Towers

- Towers rise 88 stories plus radio/TV antennae
- Government supported this project
- The national oil company controls 49% of floor space
- First floors consist of fine shopping mall.









Mall shop in Petronas Towers



Port Klang designed take business away from Singapore



Modern container port



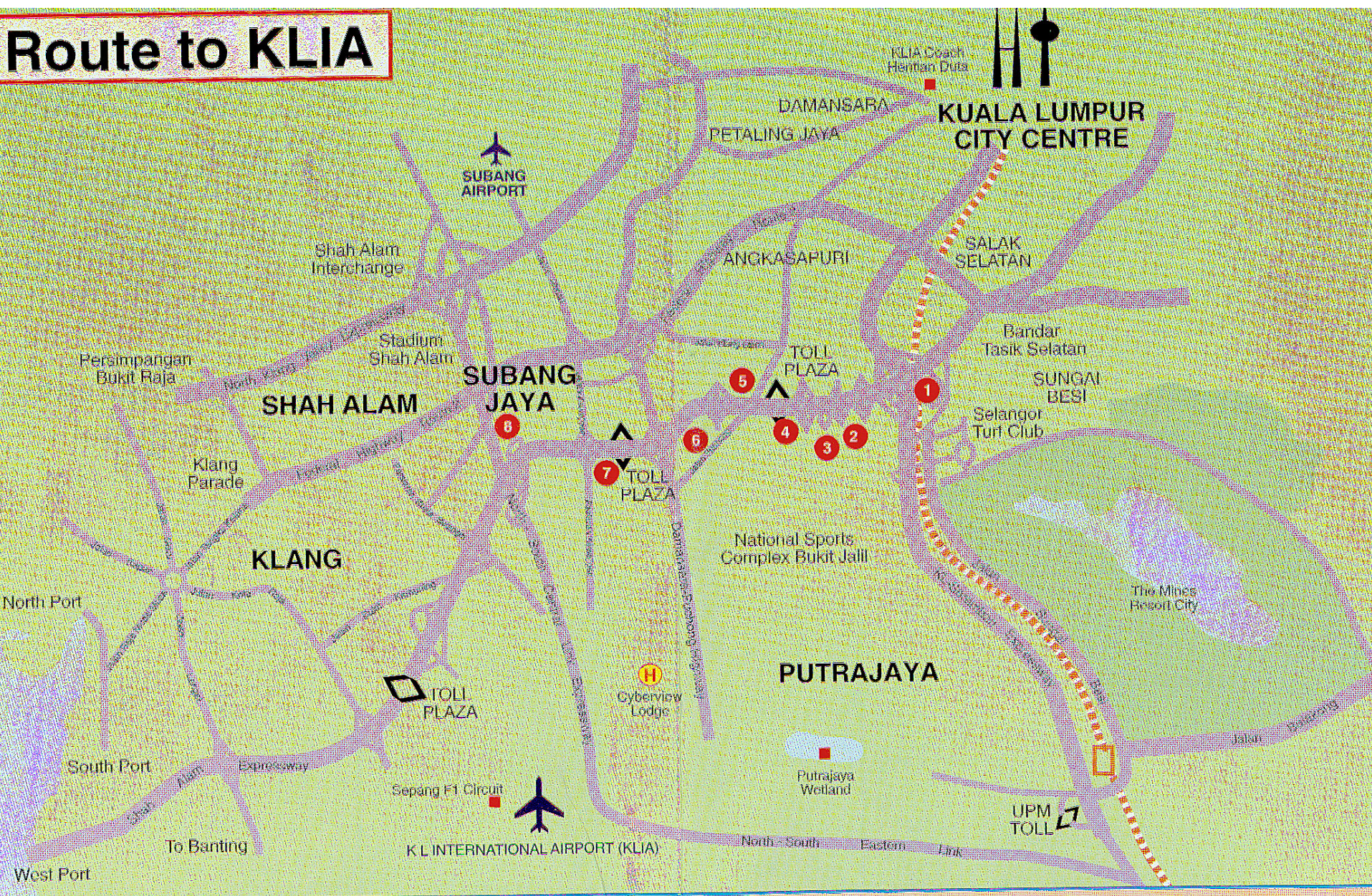
Squatter Settlements



Planning a World City

- Planners have created the Multi-Media Super Corridor a large area (60 square miles) with excellent transportation including an airport and excellent freeway network to attract research and development firms working in communications and electronic technology.

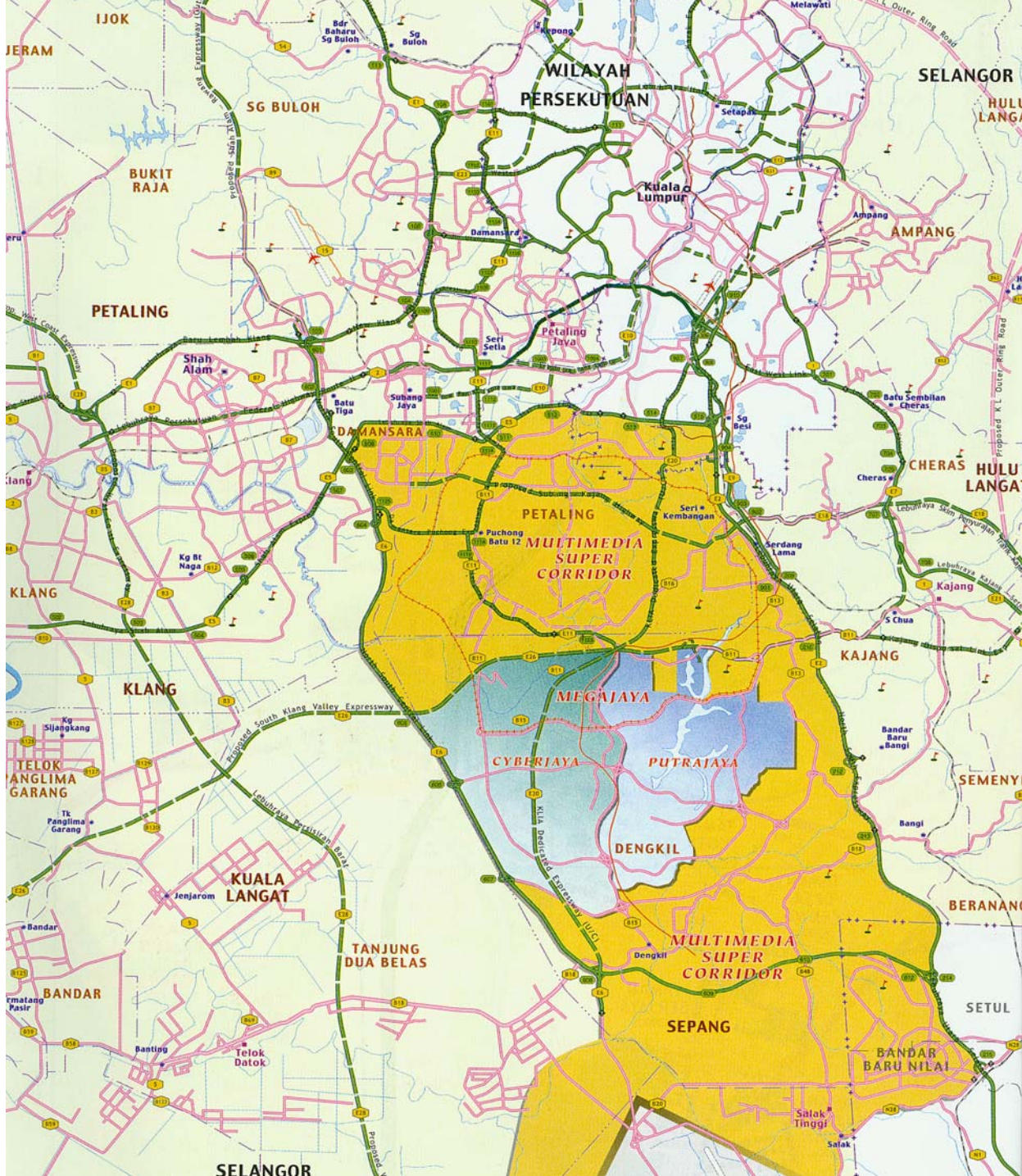
Route to KLIA



- **Railway Interchange**
1 **SRI PETALING**
2 **NATIONAL SPORTS COMPLEX**
3 **AWAN KECIL**
4 **AWAN BESAR**
5 **KINRARA**
6 **SUNWAY**
7 **KEWAJIPAN**
8 **SEAFIELD**

Two new towns

- Cyberjaya is designed to be a version of Silicone valley
- Petrajaya a new government city focused on the Prime Minister's office. The legislative branch will remain in central KL.
- Other amenities such tourist hotels and golf clubs have been built in the area to attract private development.



Petrojaya: a \$6 billion investment







elatan

0

AWAS







World Cities

- Centers of national & international tourism
- Centers of banking and financial services
- Centers of political power and non-governmental organizations
- Centers of consumption of luxury goods
- Centers for advanced professional services

World city functions cont.

- Centers of high-order information production
- Concentration of large corporations and associated advance business services
- Centers of culture, Arts, entertainment, fashion and design industries.

Friedman's world cities hierarchy

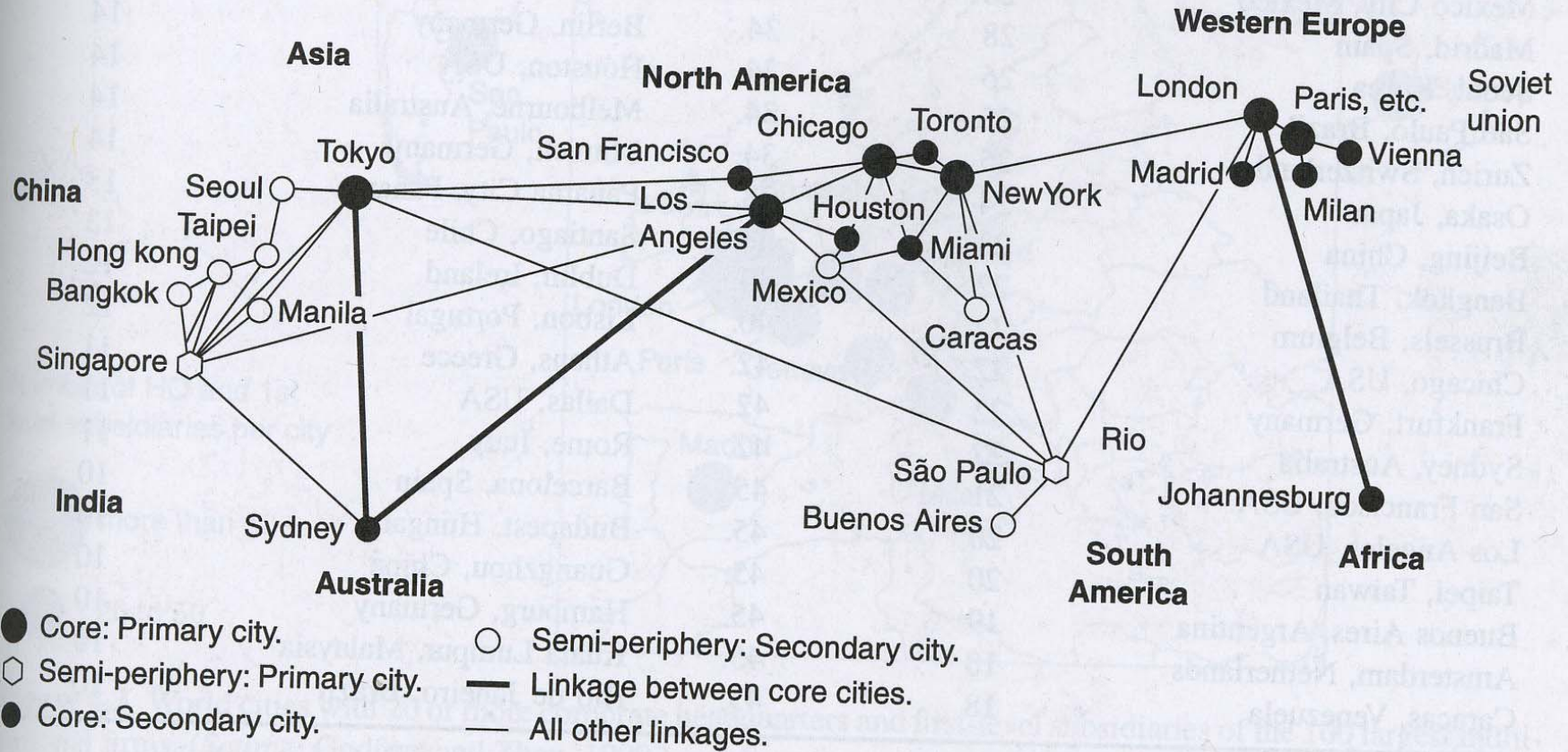


Figure 4.2 Friedmann's hierarchy of world cities, 1986. (Source: Friedmann, 1986.)

Table 4.1 Friedmann's World City Hierarchy, 1986*

<i>Core Countries</i>		<i>Semiperipheral Countries</i>	
<i>Primary</i>	<i>Secondary</i>	<i>Primary</i>	<i>Secondary</i>
Chicago	Brussels	São Paulo	Bangkok
Frankfurt	Houston	Singapore	Buenos Aires
London	Madrid		Caracas
Los Angeles	Miami		Hong Kong
New York	San Francisco		Johannesburg
Paris	Sydney		Manila
Rotterdam	Toronto		Mexico City
Tokyo	Vienna		Rio de Janeiro
Zurich			Seoul
			Taipei

Source: Friedmann, 1986, p. 72.

*Cities are listed alphabetically.

Cities ranked by HQs and first level subsidiaries of 100 largest cos,

- New York
- Tokyo
- London
- Hong Kong
- Singapore
- Milan
- Paris
- Mexico
- Madrid
- Seoul
- Sao Paulo
- Zurich
- Osaka
- Beijing
- Bangkok
- Brussels
- Chicago
- #45 Kuala Lumpur

conclusion

- The national government has invested heavily in urban landscapes and infrastructure as a part of the New Economic Policy
- Building has occurred in anticipation of need
- Infrastructure considered necessary to attract direct foreign investment

- Large public works have been used to stimulate national economy and train new generation of skilled workers and labor in a variety of occupations.
- Cities reflect future and past
- Cultural monuments have been preserved
- Post modern skylines have been created the landscape separates major ethnic groups in Malaysia and to some extent in Singapore – cultural pluralism remains an issue.
- Competition for world city status is keen.
- Cities of PRC will become formidable rivals.