

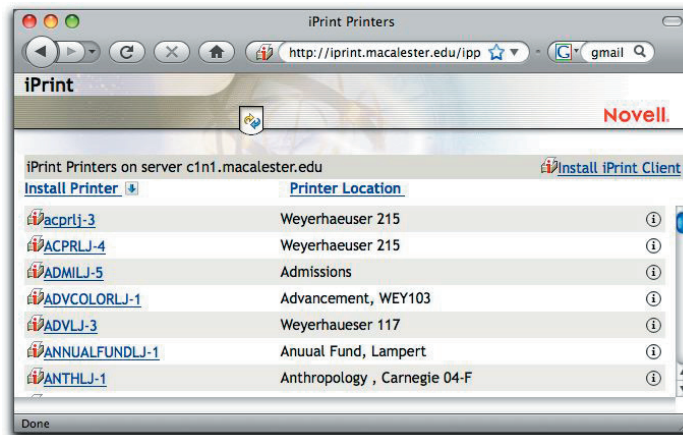
Network Printers

for Windows XP and Vista

This document provides instructions on how to install a network printer on a Windows computer.

iPrint

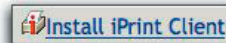
There are two ways to access iPrint. The first site, <http://141.140.1.3/ipp>, has older printers, while a second site, <http://iprint.macalester.edu/ipp> has newer ones. First determine how old the printer is, and choose a site accordingly.



Installing the iPrint Client

If you are accessing the site for the first time, you will need to install the iPrint Client.

- Click on **Install iPrint Client** in the top right corner of the screen
- Click the **Save File** button



The iPrint Client will be downloaded to the desktop.

- Double click on **nipp.exe** in the Downloads window or on the desktop
- Click the **Run** button to begin the install
- Click the **Next** button
- Click the **Finish** button
- Restart the computer

The iPrint Client is now installed on your computer.

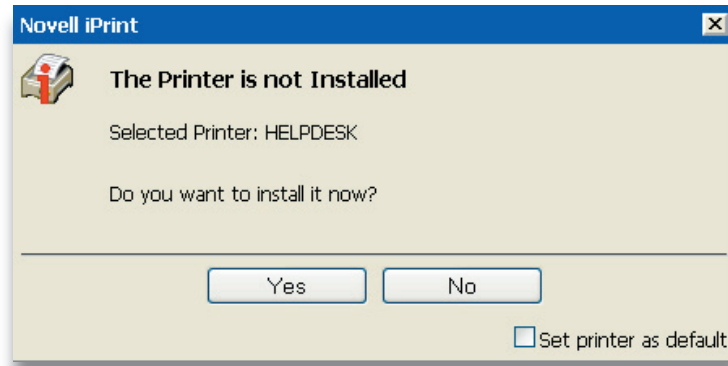
Installing a printer

- Find the printer name

Printer names will be displayed on the top of the printer and usually end in LJ-x.

- Return to the iPrint webpage
- Select your printer from the list

A window will pop up asking if you want to install the printer.



- Click the **Yes** button

The installation will run.

- Click the **OK** button

The printer is now installed on your computer.

