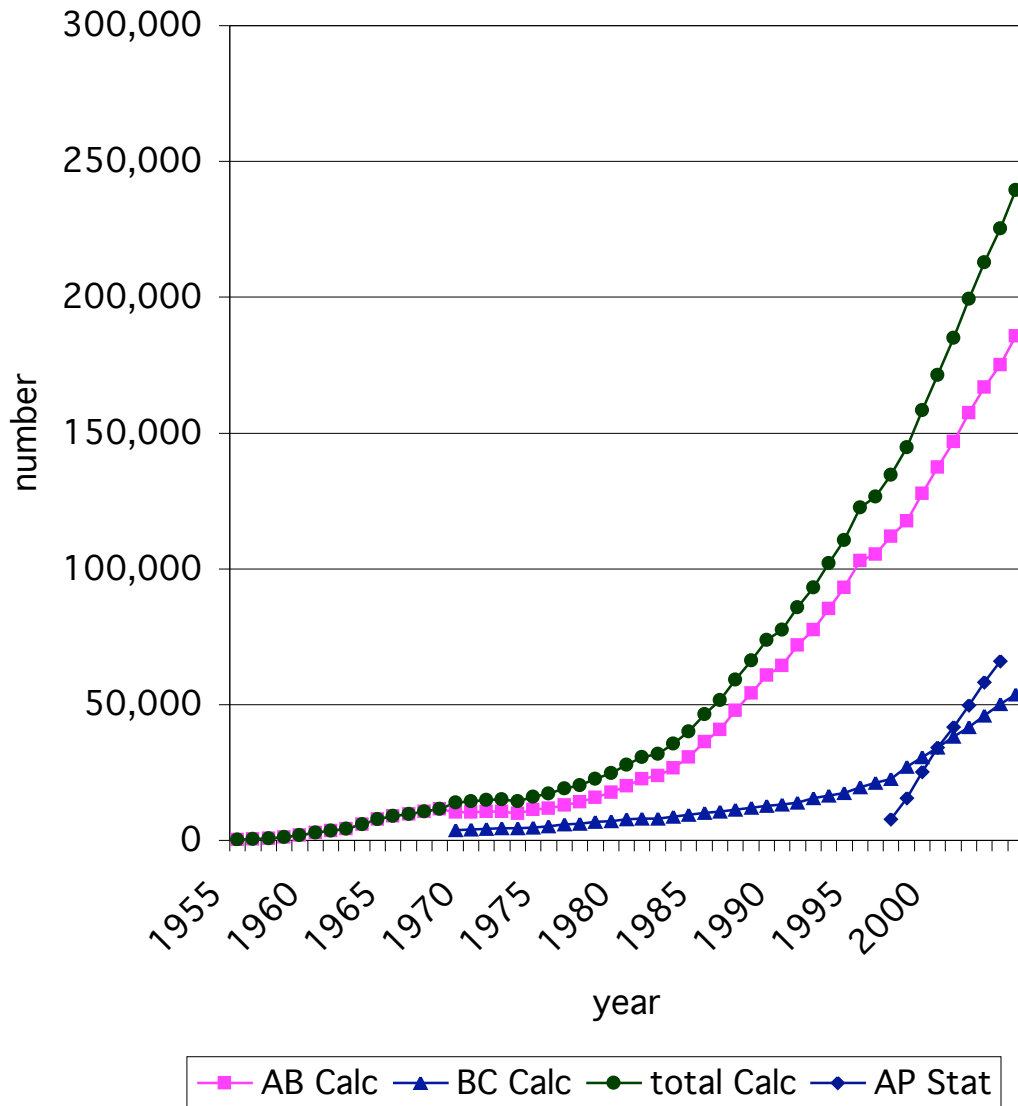
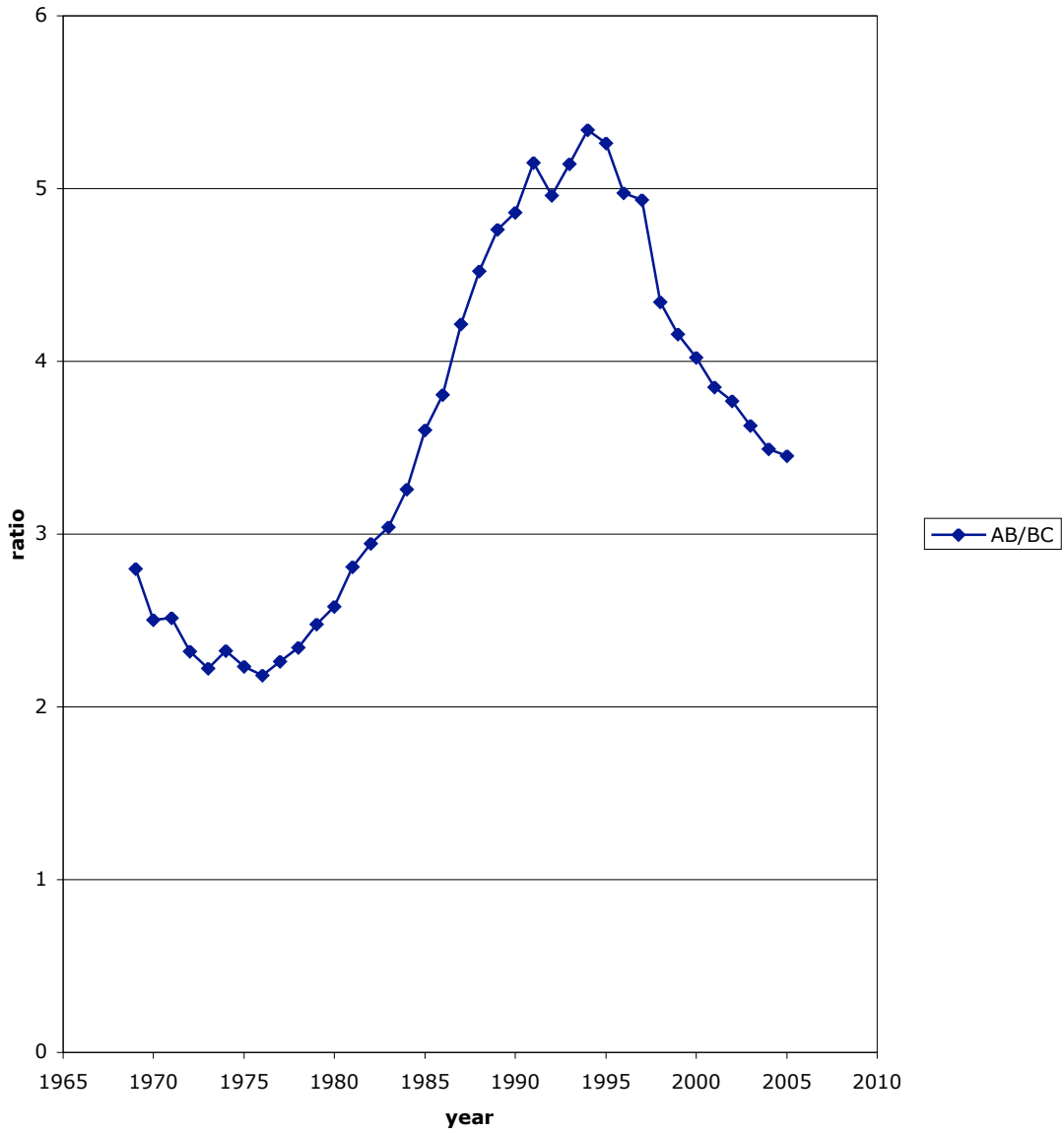


year	AB exams	BC exams	Total Calculus exams	Statistics exams	% change from previous year	5-year running average of % change	% change in BC	5-year running average of % change in BC	ratio of AB to BC exams
1955	285		285						
1956	380		380		0.33333				
1957	750		750		0.97368				
1958	1,177		1,177		0.56933				
1959	1,870		1,870		0.58879				
1960	2,908		2,908		0.55508	0.591292			
1961	3,609		3,609		0.24106	0.568631			
1962	4,190		4,190		0.16099	0.410687			
1963	5,858		5,858		0.39809	0.378461			
1964	7,710		7,710		0.31615	0.327525			
1965	9,021		9,021		0.17004	0.2541			
1966	9,630		9,630		0.06751	0.21688			
1967	10,703		10,703		0.11142	0.206308			
1968	11,623		11,623		0.08596	0.146869			
1969	10,280	3,674	13,954		0.20055	0.125975			2.79804
1970	10,273	4,106	14,379		0.03046	0.097728	0.11758		2.50195
1971	10,592	4,214	14,806		0.0297	0.089839	0.0263		2.51353
1972	10,611	4,575	15,186		0.02567	0.072476	0.08567		2.31934
1973	9,871	4,439	14,310		-0.05768	0.042472	-0.02973		2.2237
1974	11,213	4,825	16,038		0.12075	0.02823	0.08696	0.0560188	2.32394
1975	11,804	5,286	17,090		0.06559	0.035149	0.09554	0.0518205	2.23307
1976	13,076	5,989	19,065		0.11556	0.051865	0.13299	0.0728326	2.18334
1977	14,089	6,228	20,317		0.06567	0.059945	0.03991	0.0636323	2.2622
1978	15,774	6,736	22,510		0.10794	0.094831	0.08157	0.0869846	2.34175
1979	17,615	7,112	24,727		0.09849	0.090446	0.05582	0.0806844	2.4768
1980	20,096	7,783	27,879		0.12747	0.102826	0.09435	0.0804483	2.58204
1981	22,537	8,021	30,558		0.09609	0.098949	0.03058	0.0601684	2.80975
1982	23,825	8,093	31,918		0.04451	0.094549	0.00898	0.0537854	2.9439
1983	26,706	8,783	35,489		0.11188	0.095327	0.08526	0.0545038	3.04065
1984	30,583	9,379	39,962		0.12604	0.100766	0.06786	0.0568977	3.2608
1985	36,282	10,069	46,351		0.15988	0.107022	0.07357	0.0528533	3.60334
1986	40,790	10,717	51,507		0.11124	0.110065	0.06436	0.0596659	3.8061
1987	47,783	11,340	59,123		0.14786	0.131212	0.05813	0.0697953	4.21367
1988	54,235	11,992	66,227		0.12016	0.132891	0.0575	0.0642649	4.5226
1989	60,869	12,778	73,647		0.11204	0.13006	0.06554	0.0638031	4.76358
1990	64,371	13,239	77,610		0.05381	0.108592	0.03608	0.0562671	4.86223
1991	71,769	13,939	85,708		0.10434	0.107213	0.05287	0.0539783	5.14879
1992	77,557	15,639	93,196		0.08737	0.095288	0.12196	0.0663977	4.9592
1993	85,351	16,594	101,945		0.09388	0.0901	0.06107	0.0671166	5.14349
1994	93,077	17,431	110,508		0.084	0.084545	0.05044	0.0640741	5.33974
1995	103,032	19,581	122,613		0.10954	0.095781	0.12334	0.0814238	5.26184
1996	105,402	21,186	126,588		0.03242	0.081121	0.08197	0.0873353	4.97508
1997	111,834	22,668	134,502	7,667	0.06252	0.076134	0.06995	0.0770623	4.93356
1998	117,671	27,088	144,759	15,486	0.07626	0.072645	0.19499	0.1029737	4.34403
1999	127,744	30,724	158,468	25,240	0.0947	0.074755	0.13423	0.1200337	4.15779
2000	137,276	34,142	171,418	34,118	0.08172	0.069311	0.11125	0.1176114	4.02074
2001	146,771	38,134	184,905	41,609	0.07868	0.078726	0.11692	0.1247414	3.84882
2002	157,524	41,785	199,309	49,824	0.0779	0.081832	0.09574	0.1301119	3.76987
2003	166,821	45,973	212,794	58,230	0.06766	0.080097	0.10023	0.1115914	3.62867
2004	175,094	50,134	225,228	65,878	0.05843	0.072843	0.09051	0.1028868	3.49252
2005	185,750	53,800	239,550		0.06359	0.069222	0.07312	0.0952132	3.4526
TOTAL	2,415,668	614,522	3,030,190	298,052					

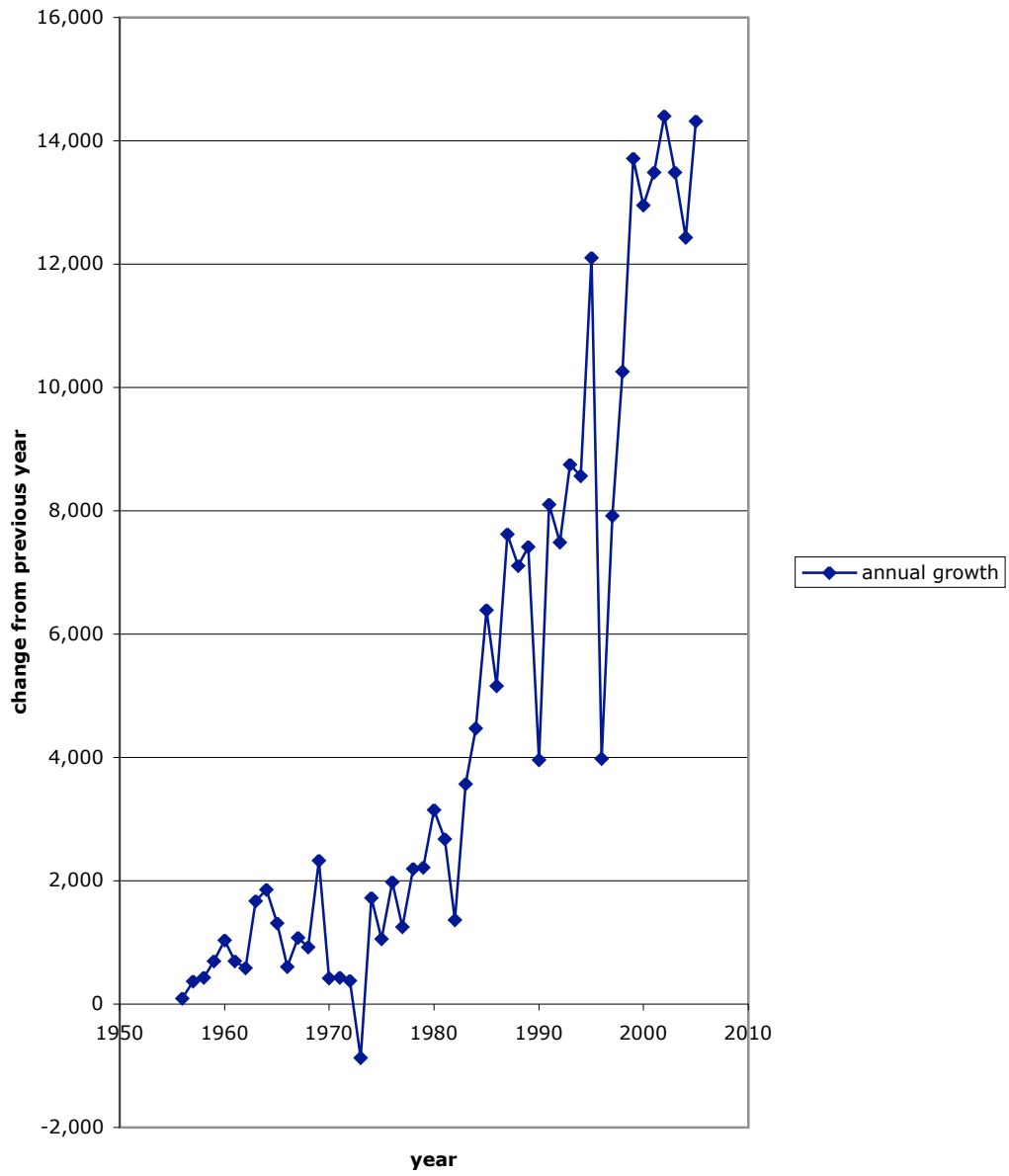
AP Calculus



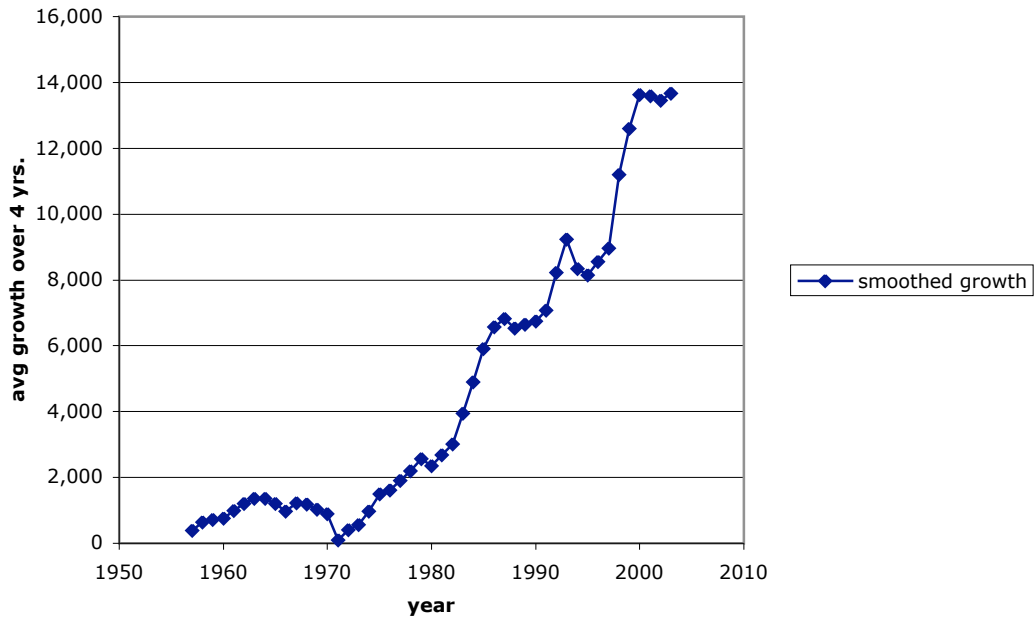
Ratio of AB to BC exams



annual growth, 1955-2005

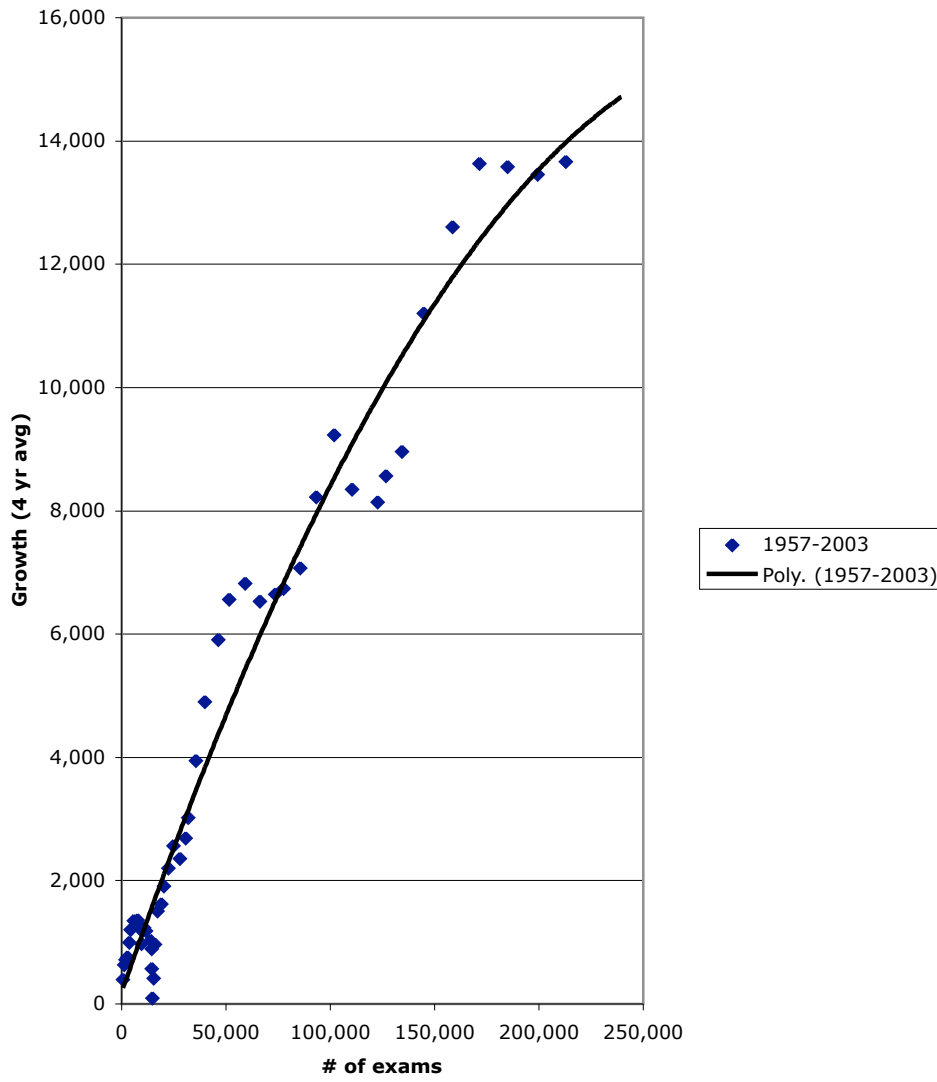


smoothed growth, 1957-2003

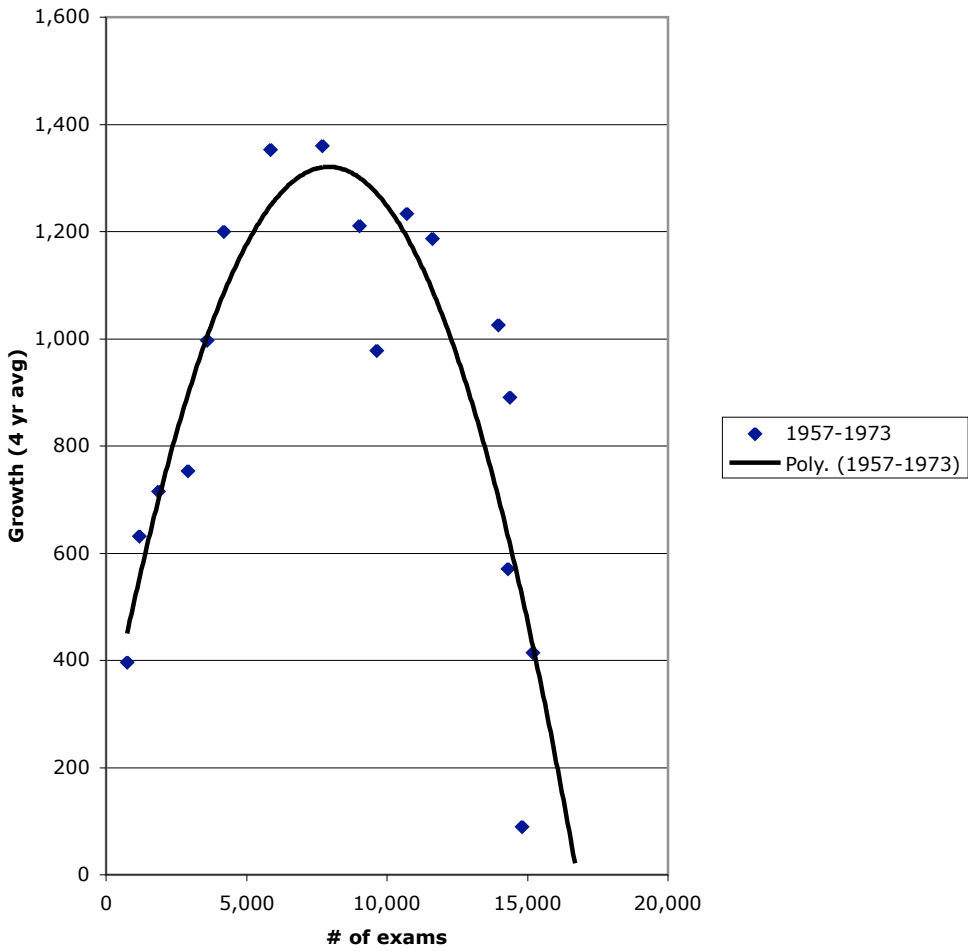


change in total number of exams	4-year running average of change in number of exams	change in # of BC exams	log of # of exams	log of 4-year running average of change in # of exams
95				
370			2.87506	
427			3.07078	
693	396		3.27184	2.597969275
1,038	632		3.46359	2.800717078
701	715		3.55739	2.854154164
581	753		3.62221	2.87693914
1,668	997		3.76775	2.998695158
1,852	1,201		3.88705	3.079362164
1,311	1,353		3.95525	3.131297797
609	1,360		3.98363	3.133538908
1,073	1,211		4.02951	3.08323379
920	978		4.06532	2.990449857
2,331	1,233		4.1447	3.091051124
425	1,187	432	4.15773	3.074542178
427	1,026	108	4.17044	3.011041526
380	891	361	4.18144	2.949755831
-876	89	-136	4.15564	1.949390007
1,728	415	386	4.20515	2.617786395
1,052	571	461	4.23274	2.756636108
1,975	970	703	4.28024	2.986659788
1,252	1,502	239	4.30786	3.176597641
2,193	1,618	508	4.35238	3.208978517
2,217	1,909	376	4.39317	3.280862799
3,152	2,204	671	4.44528	3.343113055
2,679	2,560	238	4.48512	3.408282375
1,360	2,352	72	4.50404	3.371437317
3,571	2,691	690	4.55009	3.429832996
4,473	3,021	596	4.60165	3.480114784
6,389	3,948	690	4.66606	3.596404644
5,156	4,897	648	4.71187	3.689952275
7,616	5,909	623	4.77176	3.77147724
7,104	6,566	652	4.82104	3.817317414
7,420	6,824	786	4.86716	3.834039018
3,963	6,526	461	4.88992	3.814630432
8,098	6,646	700	4.93302	3.822576673
7,488	6,742	1,700	4.9694	3.828804852
8,749	7,075	955	5.00837	3.849695751
8,563	8,225	837	5.04339	3.915109505
12,105	9,226	2,150	5.08854	3.965025218
3,975	8,348	1,605	5.10239	3.92158244
7,914	8,139	1,482	5.12873	3.910584388
10,257	8,563	4,420	5.16065	3.932613264
13,709	8,964	3,636	5.19994	3.952489736
12,950	11,208	3,418	5.23406	4.049508748
13,487	12,601	3,992	5.26695	4.100396395
14,404	13,638	3,651	5.29953	4.134734764
13,485	13,582	4,188	5.32796	4.132947738
12,434	13,453	4,161	5.35262	4.128803001
14,322	13,661	3,666	5.3794	4.135490439

growth as fcn of volume, 1957-2003



growth as fcn of volume, 1957-1973



Growth as fcn of volume

