

Macalester College

Energy Consumption Analysis

Prepared by:

Edward H. Cook & Associates, P.A.

December 2011



**EDWARD H. COOK
& ASSOCIATES, P.A.**

Mechanical Engineering Consultants

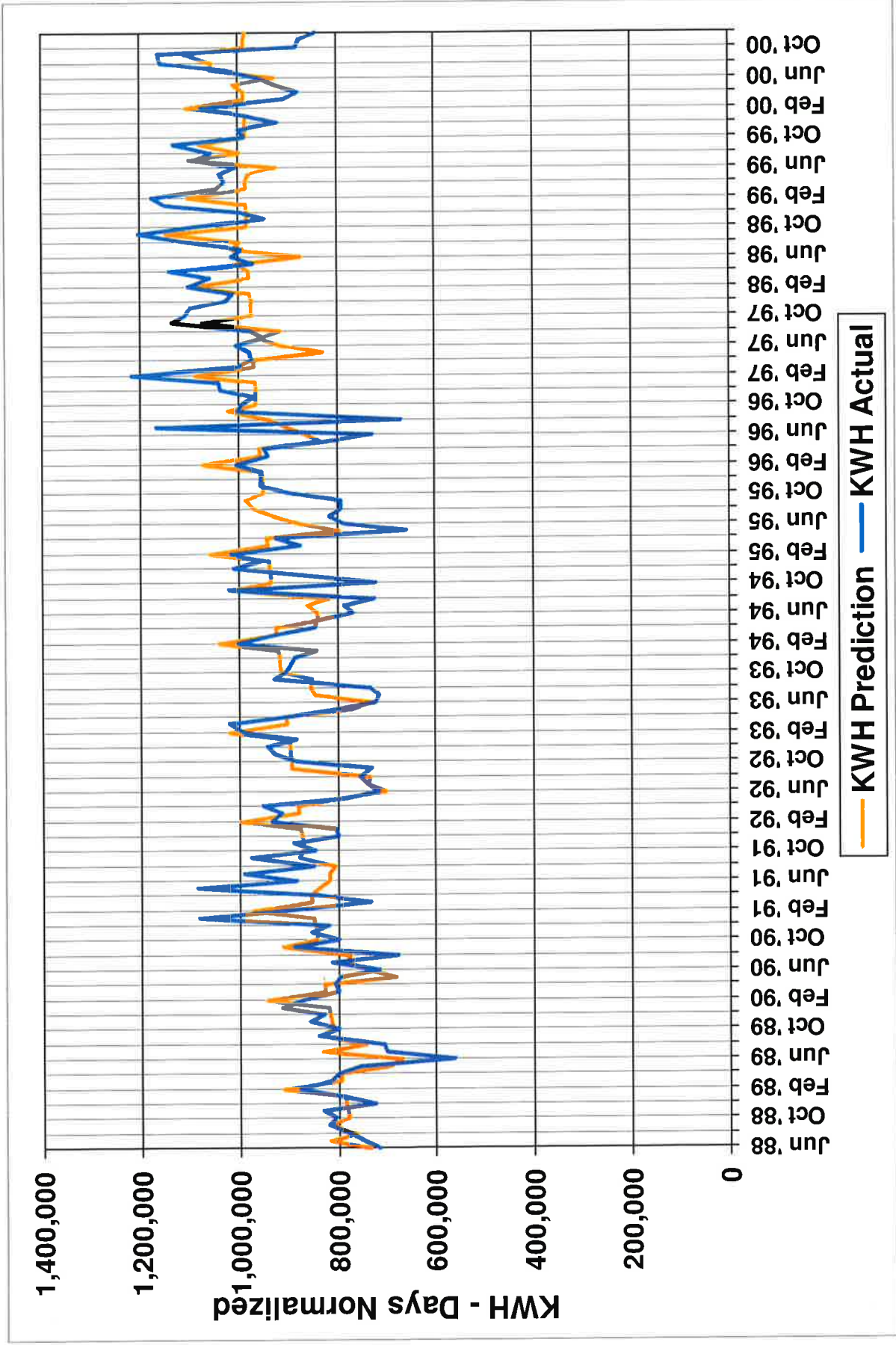
809 Goodrich Avenue, St. Paul, MN 55105
Tel: 651-298-0940 www.cookconsultants.com

Macalester College

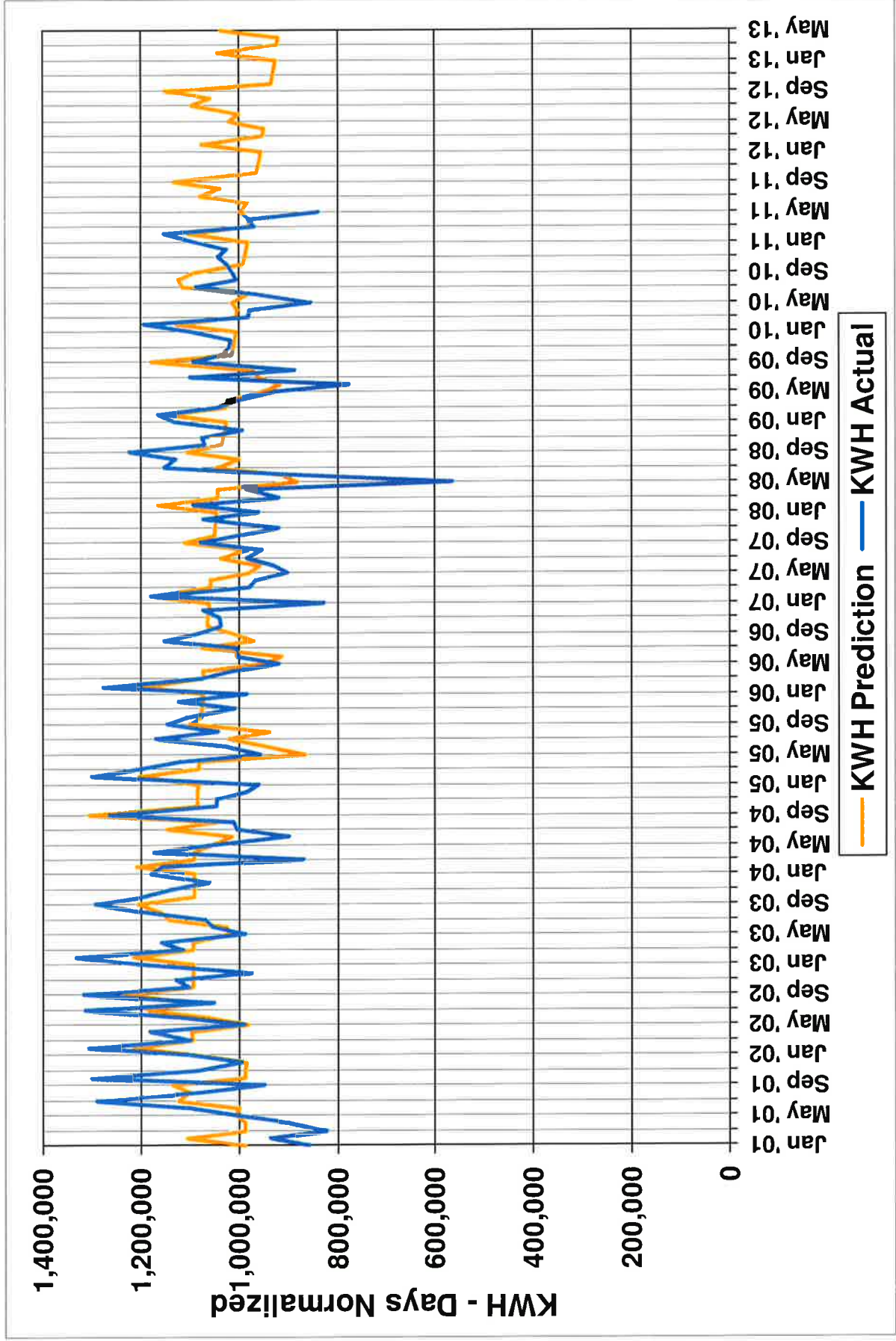
Table of Contents

	Page
KWH Consumption and Demand	
Actual and Predicted Continuous Monthly Days Normalized Charts	3
Trend in Fiscal Year Consumption per GSF, Weather and Days Normalized Chart	5
Fiscal Year Peak Demand Chart	6
Fiscal Year Peak Demand per GSF Chart	7
Fiscal Year Electric Cost	8
Fiscal Year Electric Cost per GSF	9
Fiscal Year Electric Cost per KWH	10
Fiscal Year Data Sheets	11
Monthly Data Sheets	13
Fuel BTU Consumption	
Actual and Predicted Continuous Monthly Days Normalized Charts	24
Trend in Fiscal Year Consumption per GSF, Weather and Days Normalized Chart	26
Fiscal Year Fuel Cost	27
Fiscal Year Fuel Cost per GSF	28
Fiscal Year Fuel Cost per MMBTU	29
Fiscal Year Data Sheets	30
Monthly Data Sheets	32
Weather and Building Square Footage Data	
Fiscal Year Degree Days Chart	43
Monthly HDD, CDD, and THI Data Sheets	42
Building Square Footage Summary	47

Macalester College Actual and Predicted Electric Consumption

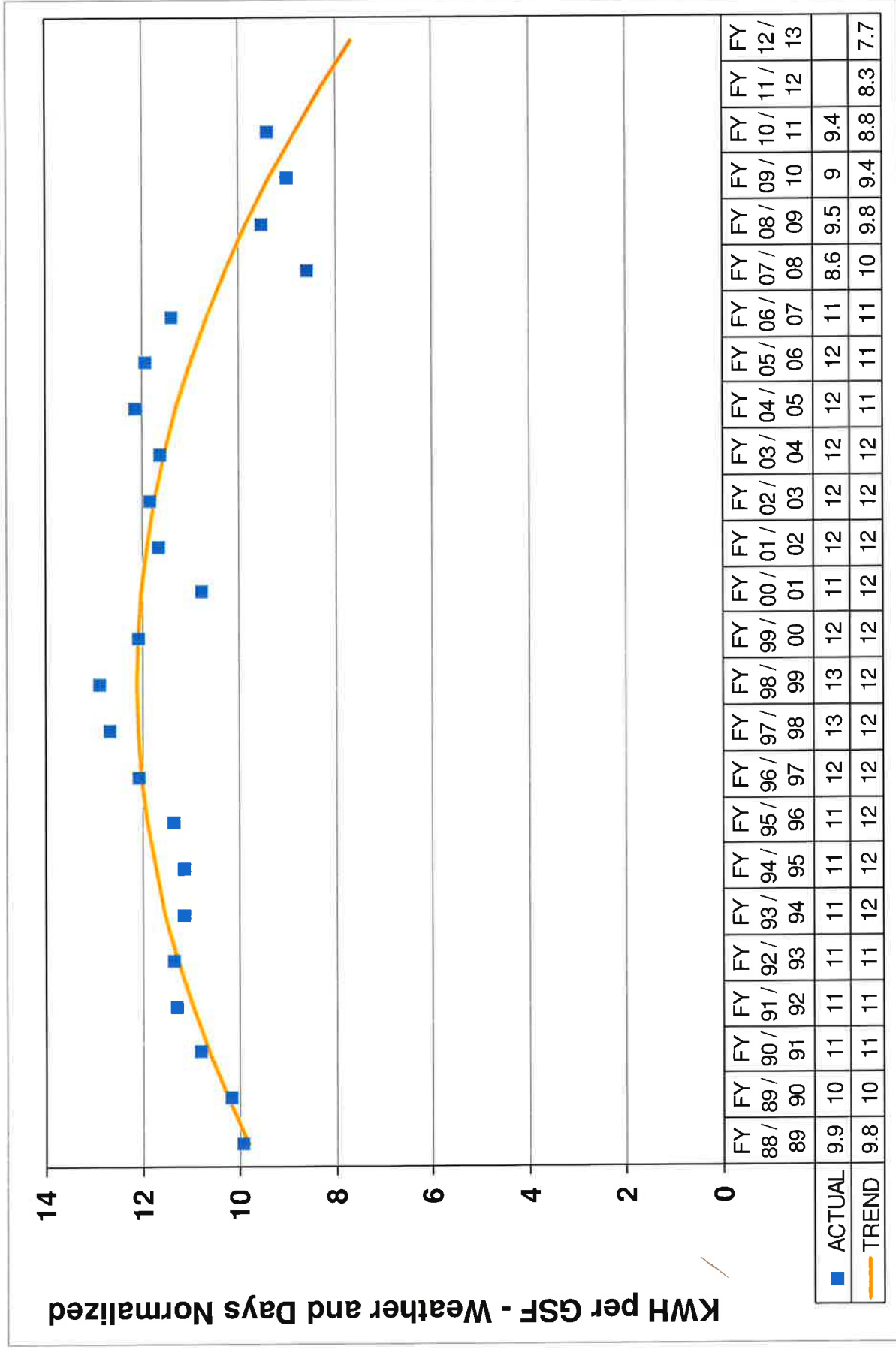


Macalester College Actual and Predicted Electric Consumption

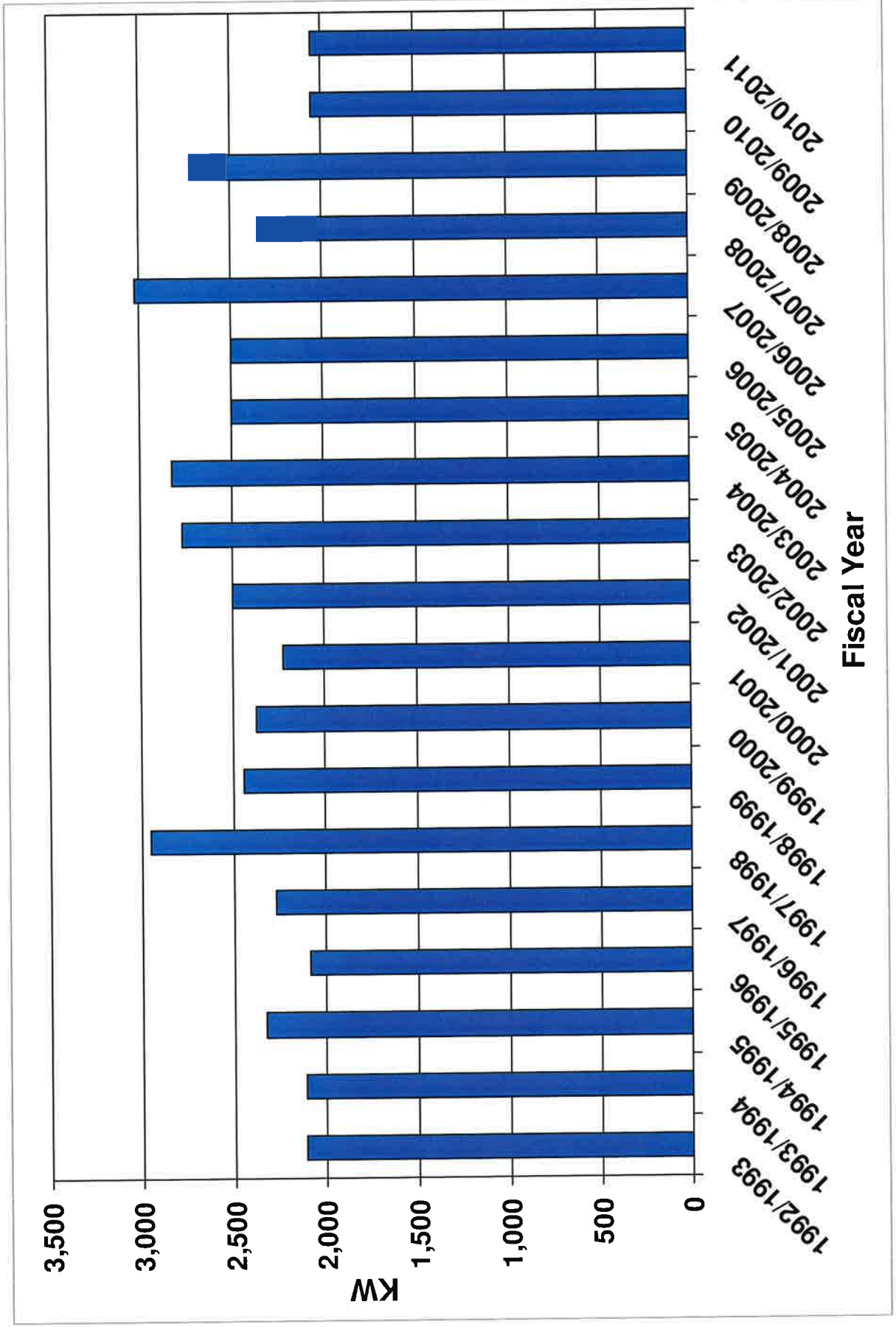


Macalester College

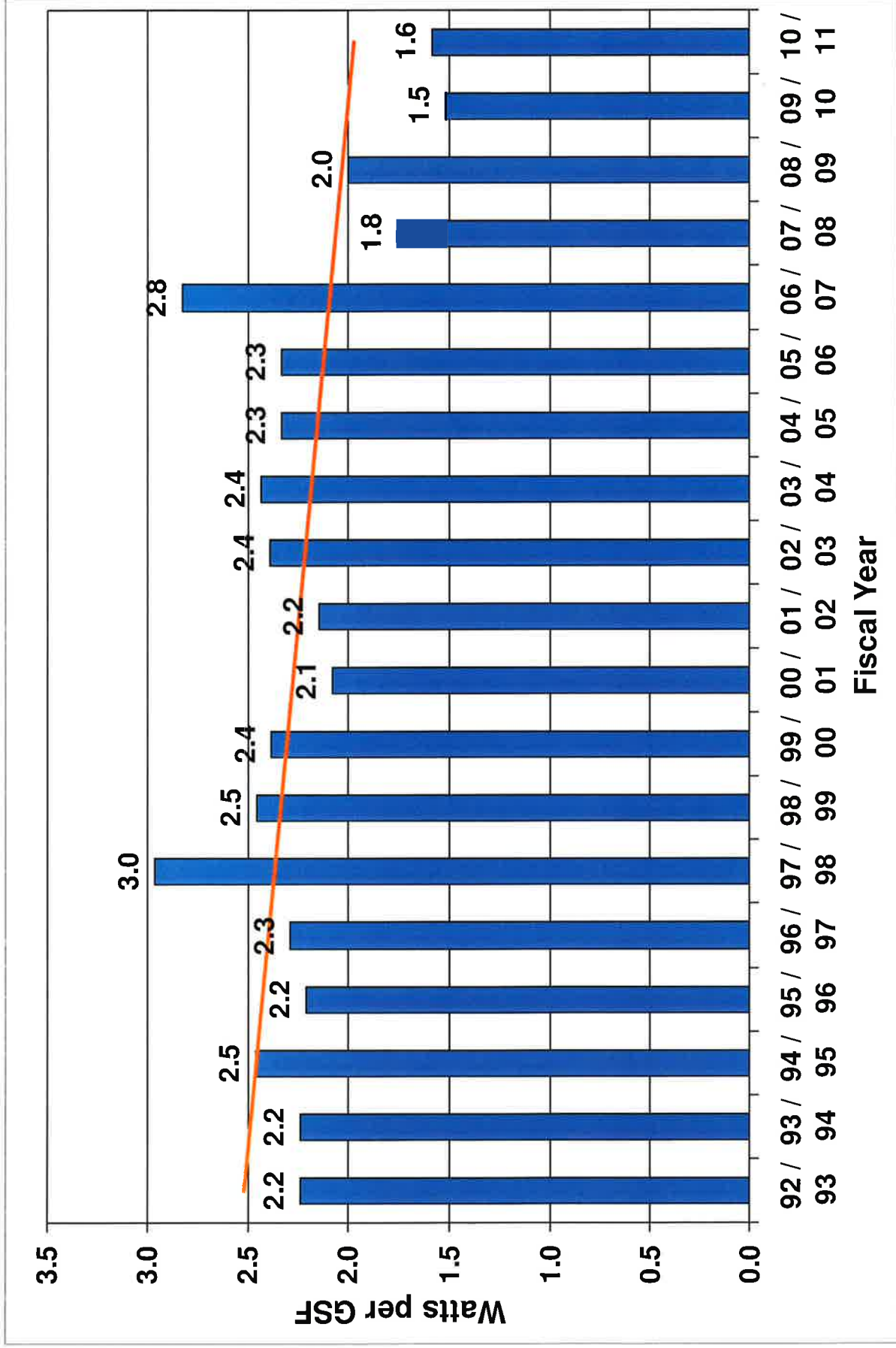
FY Weather Normalized Electric Consumption per GSF



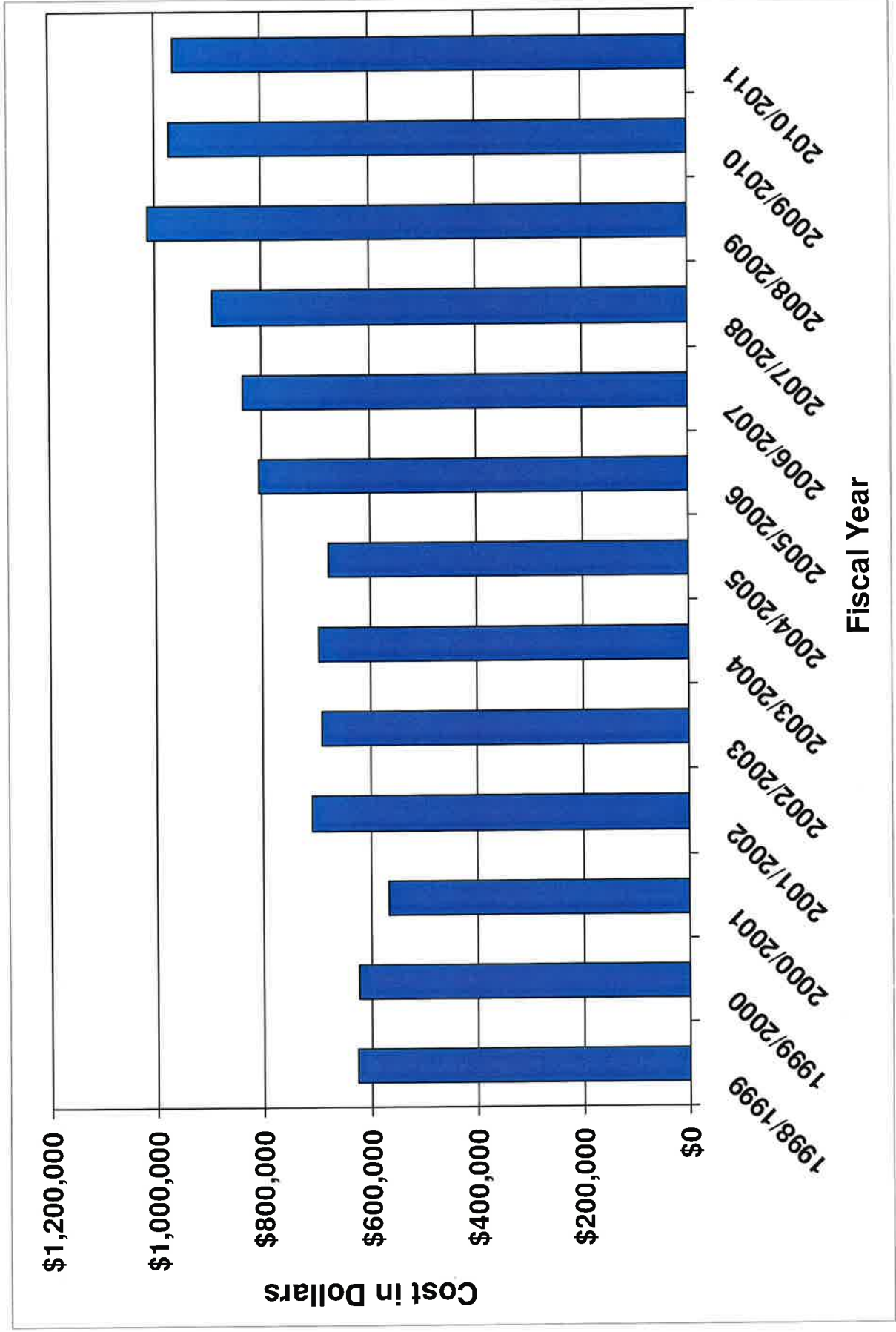
Macalester College Fiscal Year Electric Peak Demand



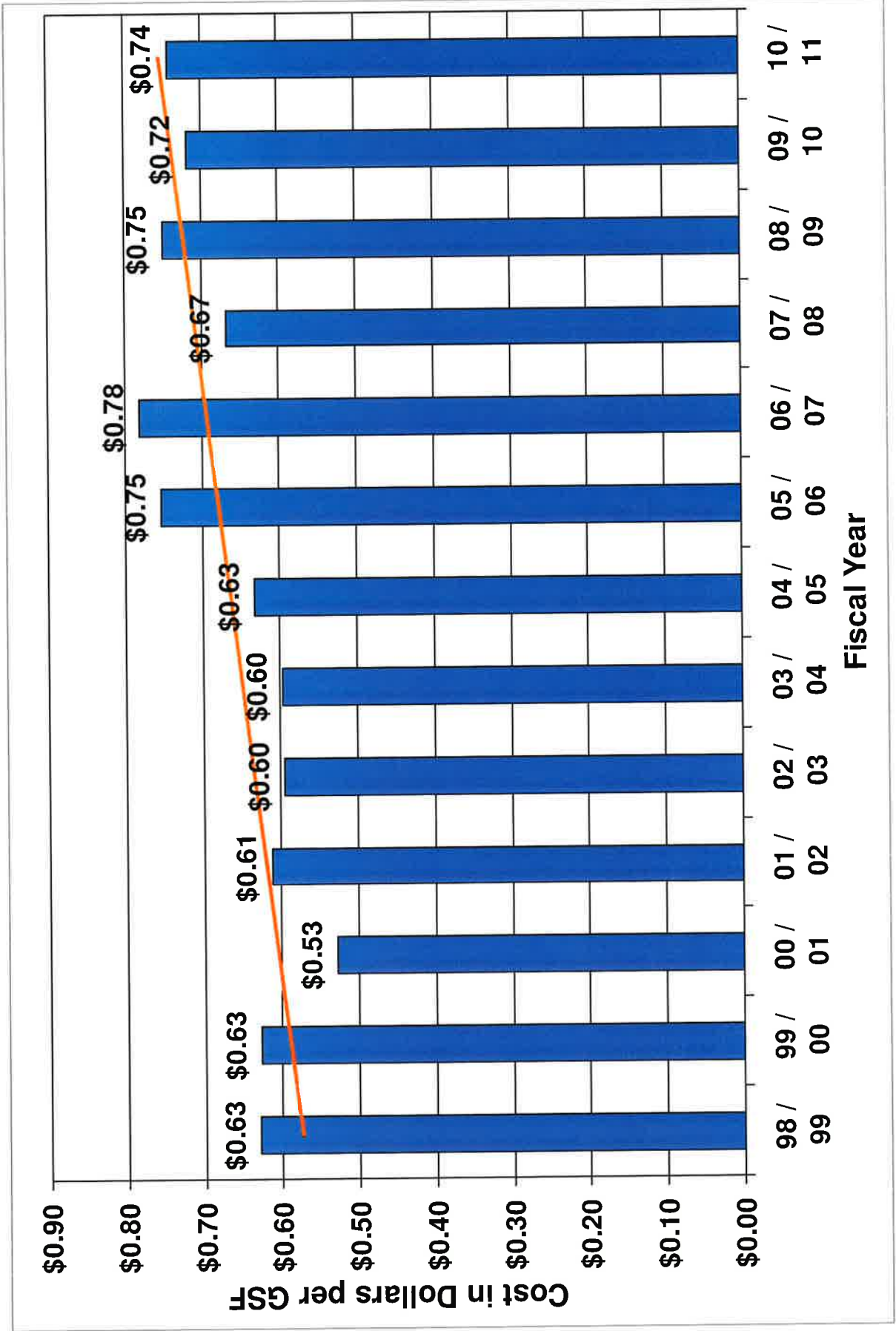
Macalester College Fiscal Year Electric Peak Demand per GSF



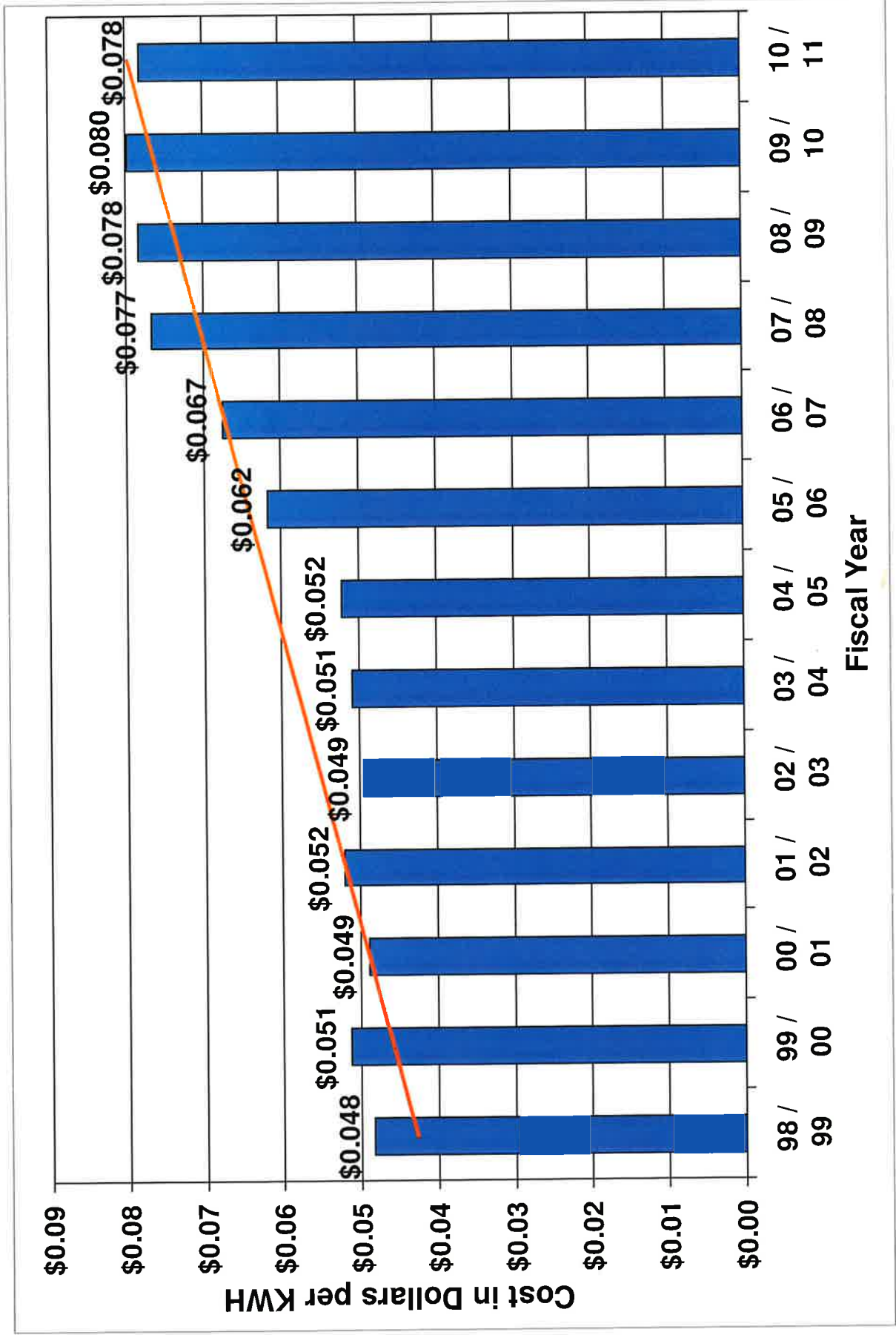
Macalester College Fiscal Year Electric Cost



Macalester College Fiscal Year Electric Cost per GSF



Macalester College Fiscal Year Electric Cost per KWH



Macalester College Fiscal Year Electric Consumption

Fiscal Year	KWH Consumption	Electric Cost	Cost Per KWH	Billing Days	KWH - Days Normalized (365)	KWH - Wthr and Days Normalized	Gross Sq Feet	KWH per GSF - Days Norm	KWH per GSF - Wthr/Days Norm
2010/2011	12,360,302	\$964,233	\$0.078	365	12,360,302	12,202,189	1,298,551	9.52	9.40
2009/2010	12,181,860	\$972,851	\$0.080	365	12,181,860	12,195,893	1,354,111	9.00	9.01
2008/2009	12,971,086	\$1,014,472	\$0.078	365	12,971,086	12,914,921	1,354,111	9.58	9.54
2007/2008	11,647,685	\$891,857	\$0.077	366	11,615,861	11,512,312	1,337,111	8.69	8.61
2006/2007	12,399,200	\$836,588	\$0.067	365	12,399,200	12,210,493	1,070,795	11.58	11.40
2005/2006	13,058,757	\$807,129	\$0.062	365	13,058,757	12,773,976	1,070,795	12.20	11.93
2004/2005	12,944,171	\$677,250	\$0.052	365	12,944,171	12,995,836	1,070,795	12.09	12.14
2003/2004	13,648,123	\$694,744	\$0.051	366	13,610,833	13,537,178	1,162,111	11.71	11.65
2002/2003	13,972,860	\$691,556	\$0.049	365	13,972,860	13,773,997	1,162,111	12.02	11.85
2001/2002	13,642,313	\$709,963	\$0.052	365	13,642,313	13,568,360	1,162,111	11.74	11.68
2000/2001	11,583,294	\$566,057	\$0.049	365	11,583,294	11,571,789	1,070,795	10.82	10.81
1999/2000	12,148,875	\$623,168	\$0.051	366	12,115,681	12,015,373	994,730	12.18	12.08
1998/1999	12,940,725	\$625,226	\$0.048	365	12,940,725	12,818,082	994,730	13.01	12.89
1997/1998	12,737,018			365	12,737,018	12,631,577	994,730	12.80	12.70
1996/1997	11,918,661			365	11,918,661	12,010,570	994,730	11.98	12.07
1995/1996	10,836,825			366	10,807,216	10,725,091	943,245	11.46	11.37
1994/1995	10,454,202			365	10,454,202	10,510,816	943,245	11.08	11.14
1993/1994	10,384,173			365	10,384,173	10,518,994	943,245	11.01	11.15
1992/1993	10,420,800			365	10,420,800	10,720,196	943,245	11.05	11.37

Fiscal Year	KWH Consumption	Electric Cost	Cost Per KWH	Billing Days	KWH - Days Normalized (365)	KWH - Wthr and Days Normalized	Gross Sq Feet	KWH per GSF - Days Norm	KWH per GSF - Wthr/Days Norm
1991/1992	10,794,071			366	10,764,579	10,659,179	943,245	11.41	11.30
1990/1991	10,364,329			365	10,364,329	10,198,211	943,245	10.99	10.81
1989/1990	9,614,400			365	9,614,400	9,604,096	943,245	10.19	10.18
1988/1989	9,580,000			365	9,580,000	9,370,985	943,245	10.16	9.93

Macalester College Monthly Electric Consumption

Fiscal Year	Year	Month	Electric Consumption KWH	Billing Days	KWH - Days Normalized	Heating Degree Days	THI Days	KWH - Days and Wthr Normalized
2010/2011								
2011		May	867,563	31	839,577	59.9	145.7	842,585
2011		Apr	981,799	30	981,799	270.6	5.6	981,779
2011		Mar	1,003,437	31	971,068	777.3	0	971,109
2011		Feb	1,076,542	28	1,153,437	1005	0	1,153,403
2011		Jan	1,124,654	31	1,088,375	1322.1	0	1,088,384
2010		Dec	1,061,258	31	1,027,024	1174.8	0	1,027,063
2010		Nov	1,043,635	30	1,043,635	590.9	3.7	1,043,576
2010		Oct	1,060,017	31	1,025,823	132.4	71.1	1,025,731
2010		Sep	1,012,717	30	1,012,717	11.1	163.4	1,035,038
2010		Aug	1,039,708	31	1,006,169	0	537	902,081
2010		Jul	1,122,388	31	1,086,182	0	528	1,030,299
2010		Jun	966,585	30	966,585	0	360.4	948,459
2009/2010								
2010		May	884,722	31	856,183	77.6	192.3	822,305
2010		Apr	978,121	30	978,121	64.5	50.2	977,856
2010		Mar	1,013,501	31	980,807	456.5	7.4	980,468
2010		Feb	1,114,517	28	1,194,125	980.5	0	1,194,061
2010		Jan	1,135,237	31	1,098,616	1293.9	0	1,098,592
2009		Dec	1,049,590	31	1,015,733	1160.9	0	1,015,755
2009		Nov	1,020,309	30	1,020,309	373.8	0.4	1,019,992
2009		Oct	1,065,009	31	1,030,654	362.5	0.5	1,030,836
2009		Sep	1,092,277	30	1,092,277	14.9	299.7	1,006,711
2009		Aug	915,906	31	886,361	0	372.3	912,640
2009		Jul	1,135,202	31	1,098,583	0	359.4	1,176,154

Fiscal Year	Year	Month	Electric Consumption KWH	Billing Days	KWH - Days Normalized	Heating Degree Days	THI Days	KWH - Days and Wthr Normalized
2008/2009	2009	Jun	777,469	30	777,469	10.9	302	805,569
2009	2009	May	958,553	31	927,632	25.9	138.8	936,101
2009	2009	Apr	1,001,359	30	1,001,359	245.5	19.8	1,001,309
2009	2009	Mar	1,077,890	31	1,043,120	690.1	0	1,043,057
2009	2009	Feb	1,087,900	28	1,165,607	951.3	0	1,165,508
2009	2009	Jan	1,169,478	31	1,131,753	1433.6	0	1,131,895
2008	2008	Dec	1,026,881	31	993,756	1275.8	0	993,915
2008	2008	Nov	1,077,198	30	1,077,198	632.9	23.3	1,077,189
2008	2008	Oct	1,104,117	31	1,068,500	185.4	41.4	1,068,472
2008	2008	Sep	1,223,709	30	1,223,709	4.3	231.1	1,192,443
2008	2008	Aug	1,165,810	31	1,128,203	0	426.4	1,111,660
2008	2008	Jul	1,189,599	31	1,151,225	0	490.4	1,125,104
2008	2008	Jun	888,592	30	888,592	0	324.4	898,961
2007/2008	2008	May	585,119	31	566,244	43	73	626,797
2008	2008	Apr	983,168	30	983,168	344.6	17.5	983,235
2008	2008	Mar	951,387	31	920,697	818.4	0	920,787
2008	2008	Feb	1,057,662	29	1,094,133	1142.3	0	1,094,261
2008	2008	Jan	993,120	31	961,084	1294.1	0	961,060
2007	2007	Dec	1,107,338	31	1,071,617	1179	0	1,071,661
2007	2007	Nov	920,235	30	920,235	818.4	0	920,447
2007	2007	Oct	1,032,803	31	999,486	127	101.1	999,389
2007	2007	Sep	1,080,084	30	1,080,084	10.9	261.3	1,024,913
2007	2007	Aug	987,758	31	955,895	0	431.5	935,315
2007	2007	Jul	1,018,173	31	985,329	0	502	950,026
2007	2007	Jun	930,838	30	930,838	0	405.6	876,934
2006/2007	2007	May	931,382	31	901,337	6.13	220.7	844,979

Fiscal Year	Year	Month	Electric Consumption KWH	Billing Days	KWH - Days Normalized	Heating Degree Days	THI Days	KWH - Days and Wthr Normalized
2005/2006	2007	Apr	966,265	30	966,265	310	49.5	966,292
	2007	Mar	1,012,118	31	979,469	534.5	17.8	979,222
	2007	Feb	1,095,434	28	1,173,680	1159.6	0	1,173,829
	2007	Jan	855,600	31	828,000	1083.9	0	827,726
	2006	Dec	1,109,884	31	1,074,081	796.8	0	1,073,671
	2006	Nov	1,040,516	30	1,040,516	555.9	4.4	1,040,416
	2006	Oct	1,072,877	31	1,038,268	339.6	42.2	1,038,423
	2006	Sep	1,082,323	30	1,082,323	41.5	163.1	1,104,882
	2006	Aug	1,189,851	31	1,151,469	0	440.4	1,123,844
	2006	Jul	1,037,349	31	1,003,886	0	575.5	910,404
	2006	Jun	1,005,600	30	1,005,600	0	371.8	978,450
	2004/2005	2006	May	950,317	31	919,662	43.4	208.2
2006		Apr	1,012,501	30	1,012,501	117.8	48.7	1,012,299
2006		Mar	1,110,807	31	1,074,974	647.4	0	1,074,861
2006		Feb	1,192,122	28	1,277,274	987.8	0	1,277,218
2006		Jan	1,017,309	31	984,493	807.8	0	983,891
2005		Dec	1,161,414	31	1,123,949	1088.7	0	1,123,886
2005		Nov	1,007,698	30	1,007,698	543.2	0.6	1,007,583
2005		Oct	1,142,070	31	1,105,229	173.8	84.4	1,105,187
2005		Sep	1,147,841	30	1,147,841	5.3	296.6	1,064,729
2005		Aug	1,077,824	31	1,043,055	0	421.7	1,030,232
2005		Jul	1,209,515	31	1,170,498	0	527.8	1,114,774
2005		Jun	1,029,339	30	1,029,339	0	440.6	947,731
2005	May	989,008	31	957,105	98.6	127.1	974,835	
2005	Apr	1,120,394	30	1,120,394	156.4	61.1	1,120,238	
2005	Mar	1,241,905	31	1,201,844	713.5	2.8	1,201,809	
2005	Feb	1,212,233	28	1,298,821	801	0	1,298,544	

Fiscal Year	Year	Month	Electric Consumption KWH	Billing Days	KWH - Days Normalized	Heating Degree Days	THI Days	KWH - Days and Wthr Normalized
	2005	Jan	991,431	31	959,449	1227.6	0	959,347
	2004	Dec	1,015,844	31	983,075	1010.8	0	982,919
	2004	Nov	1,045,310	30	1,045,310	509.4	0	1,045,154
	2004	Oct	1,079,949	31	1,045,112	194.6	40.5	1,045,095
	2004	Sep	1,265,510	30	1,265,510	1.3	312.4	1,169,892
	2004	Aug	1,044,164	31	1,010,481	0.1	312.5	1,084,095
	2004	Jul	1,038,838	31	1,005,327	0	446.9	1,013,638
	2004	Jun	899,585	30	899,585	0	280.4	944,782
2003/2004								
	2004	May	1,090,261	31	1,055,092	60.5	124	1,075,276
	2004	Apr	1,174,308	30	1,174,308	206.5	37.3	1,174,211
	2004	Mar	899,227	31	870,220	589.6	5.4	870,038
	2004	Feb	1,115,587	29	1,154,056	950.7	0	1,153,956
	2004	Jan	1,217,440	31	1,178,167	1348.8	0	1,178,208
	2003	Dec	1,095,521	31	1,060,182	925.9	0	1,059,925
	2003	Nov	1,138,782	30	1,138,782	674.2	0	1,138,822
	2003	Oct	1,236,522	31	1,196,634	207.2	66.3	1,196,632
	2003	Sep	1,292,706	30	1,292,706	52.8	218.2	1,271,651
	2003	Aug	1,227,242	31	1,187,654	0	489.4	1,121,243
	2003	Jul	1,104,289	31	1,068,667	0	473.8	1,055,685
	2003	Jun	1,056,238	30	1,056,238	0	326.2	1,065,182
2002/2003								
	2003	May	1,020,818	31	987,888	27.6	110.4	1,018,838
	2003	Apr	1,159,006	30	1,159,006	251.5	32.3	1,158,963
	2003	Mar	1,150,247	31	1,113,143	735.1	0.9	1,113,134
	2003	Feb	1,243,592	28	1,332,420	1085.8	0	1,332,481
	2003	Jan	1,239,722	31	1,199,731	1221.6	0	1,199,621
	2002	Dec	1,007,222	31	974,731	889.4	0	974,431
	2002	Nov	1,129,916	30	1,129,916	668.8	0	1,129,950

Fiscal Year	Year	Month	Electric Consumption KWH	Billing Days	KWH - Days Normalized	Heating Degree Days	THI Days	KWH - Days and Wthr Normalized	
	2002	Oct	1,137,612	31	1,100,915	416.6	17.6	1,101,161	
	2002	Sep	1,316,122	30	1,316,122	28.5	285	1,242,192	
	2002	Aug	1,088,628	31	1,053,511	0	426.9	1,036,572	
	2002	Jul	1,359,372	31	1,315,521	0	558.2	1,235,734	
	2002	Jun	1,120,602	30	1,120,602	4.5	409.3	1,063,769	
	2001/2002								
	2002	May	1,022,363	31	989,384	117.2	93.2	1,033,948	
	2002	Apr	1,182,505	30	1,182,505	345.8	50	1,182,574	
	2002	Mar	1,135,979	31	1,099,335	920.3	0	1,099,546	
	2002	Feb	1,217,885	28	1,304,877	730	0	1,304,515	
	2002	Jan	1,138,543	31	1,101,816	932.1	0	1,101,362	
	2001	Dec	1,026,060	31	992,961	840.3	0	992,602	
	2001	Nov	1,084,309	30	1,084,309	285.7	22.8	1,083,888	
	2001	Oct	1,343,280	31	1,299,949	226.4	30.6	1,299,969	
	2001	Sep	948,418	30	948,418	24.2	193.5	946,914	
	2001	Aug	1,109,605	31	1,073,811	0	478	1,016,425	
	2001	Jul	1,335,188	31	1,292,117	0	510.2	1,250,324	
	2001	Jun	1,098,178	30	1,098,178	1.9	356.1	1,083,455	
	2000/2001								
	2001	May	1,038,654	31	1,005,149	34.3	157.1	999,133	
	2001	Apr	898,560	30	898,560	257.1	44.3	898,524	
	2001	Mar	848,640	31	821,265	839.2	0	821,379	
	2001	Feb	873,600	28	936,000	1189.7	0	936,184	
	2001	Jan	887,712	31	859,076	1070.1	0	858,786	
	2000	Dec	871,968	31	843,840	1455.7	0	844,213	
	2000	Nov	876,096	30	876,096	722.2	8.9	876,193	
	2000	Oct	909,792	31	880,444	138	85	880,359	
	2000	Sep	1,161,640	30	1,161,640	35.3	191.5	1,161,720	
	2000	Aug	1,198,232	31	1,159,579	0	451.2	1,123,405	

Fiscal Year	Year	Month	Electric Consumption KWH	Billing Days	KWH - Days Normalized	Heating Degree Days	THI Days	KWH - Days and Wthr Normalized
1999/2000	2000	Jul	1,058,400	31	1,024,258	0	457.4	1,024,258
	2000	Jun	960,000	30	960,000	2.3	297.5	991,662
	2000	May	955,200	31	924,387	24.6	190.1	892,250
	2000	Apr	878,400	30	878,400	274.1	24.1	878,384
	2000	Mar	936,000	31	905,806	438.3	16	905,445
	2000	Feb	1,039,200	29	1,075,034	771.6	0	1,074,722
	2000	Jan	1,020,000	31	987,097	1200.3	0	986,961
	1999	Dec	949,527	31	918,897	900.6	0	918,611
	1999	Nov	999,273	30	999,273	406	10.1	998,994
	1999	Oct	1,020,000	31	987,097	194.7	26.5	987,080
	1999	Sep	1,131,975	30	1,131,975	18.8	186.7	1,135,854
	1999	Aug	1,090,425	31	1,055,250	0	413.6	1,048,838
1998/1999	1999	Jul	1,123,200	31	1,086,968	0	545.9	1,016,916
	1999	Jun	1,005,675	30	1,005,675	5.2	325.9	1,014,857
	1999	May	1,072,289	31	1,037,699	23.9	184.3	1,010,153
	1999	Apr	1,027,636	30	1,027,636	189.8	13.9	1,027,520
	1999	Mar	1,077,186	31	1,042,438	628.6	4	1,042,303
	1999	Feb	1,096,614	28	1,174,943	745.5	0	1,174,600
	1999	Jan	1,189,000	31	1,150,645	1279.8	0	1,150,604
	1998	Dec	1,029,200	31	996,000	920.6	0	995,737
	1998	Nov	945,600	30	945,600	519.7	4.8	945,457
	1998	Oct	1,128,000	31	1,091,613	132.4	49	1,091,522
	1998	Sep	1,201,455	30	1,201,455	5	302.5	1,113,672
	1998	Aug	1,138,545	31	1,101,818	0	446.3	1,069,523
1997/1998	1998	Jul	1,022,400	31	989,419	0	466.3	982,375
	1998	Jun	1,012,800	30	1,012,800	5.7	292.8	1,048,182

Fiscal Year	Year	Month	Electric Consumption KWH	Billing Days	KWH - Days Normalized	Heating Degree Days	THI Days	KWH - Days and Wthr Normalized
1996/1997	1998	May	1,000,800	31	968,516	2.3	247.9	890,628
	1998	Apr	1,141,694	30	1,141,694	148.9	26	1,141,529
	1998	Mar	1,094,775	31	1,059,460	712.8	6.8	1,059,424
	1998	Feb	1,027,981	28	1,101,408	623	0	1,100,920
	1998	Jan	1,043,344	31	1,009,688	1088.5	0	1,009,420
	1997	Dec	1,058,606	31	1,024,457	831.5	0	1,024,088
	1997	Nov	1,096,800	30	1,096,800	760.5	0	1,096,943
	1997	Oct	1,144,800	31	1,107,871	221	100.7	1,107,885
	1997	Sep	1,135,200	30	1,135,200	3	242.1	1,095,227
	1997	Aug	1,008,000	31	975,484	0	372.9	1,001,288
	1997	Jul	979,200	31	947,613	0	432	967,718
	1997	Jun	1,005,818	30	1,005,818	0	377	974,552
1995/1996	1997	May	1,007,782	31	975,273	83.5	58.7	1,047,145
	1997	Apr	972,000	30	972,000	308	8.6	972,024
	1997	Mar	1,036,800	31	1,003,355	746.5	0	1,003,360
	1997	Feb	1,135,139	28	1,216,220	924.5	0	1,216,090
	1997	Jan	1,074,562	31	1,039,899	1356	0	1,039,948
	1996	Dec	1,072,104	31	1,037,520	1239.5	0	1,037,636
	1996	Nov	966,194	30	966,194	869	0	966,465
	1996	Oct	1,026,900	31	993,774	200	48	993,763
	1996	Sep	1,003,500	30	1,003,500	12.5	207.8	990,677
	1996	Aug	691,200	31	668,903	0	429.1	650,223
	1996	Jul	1,204,800	31	1,165,935	0	390	1,219,286
	1996	Jun	727,680	30	727,680	0	344.7	721,981
1996	May	845,230	31	817,965	84	98.1	858,650	
1996	Apr	947,890	30	947,890	383.5	2.8	948,004	
1996	Mar	972,500	31	941,129	907.5	0	941,325	

Fiscal Year	Year	Month	Electric Consumption KWH	Billing Days	KWH - Days Normalized	Heating Degree Days	THI Days	KWH - Days and Wthr Normalized
1994/1995	1996	Feb	972,580	29	1,006,117	1054	0	1,006,141
	1996	Jan	987,320	31	955,471	1396	0	955,568
	1995	Dec	987,320	31	955,471	1159	0	955,491
	1995	Nov	955,460	30	955,460	876	0	955,740
	1995	Oct	924,000	31	894,194	252.5	37.8	894,245
	1995	Sep	792,525	30	792,525	73.5	195.4	789,517
	1995	Aug	819,903	31	793,455	0	503	716,279
	1995	Jul	844,597	31	817,352	0	454.5	819,647
	1995	Jun	787,500	30	787,500	7	394.1	742,699
	1995	May	681,213	31	659,238	51	82.1	712,588
	1995	Apr	924,387	30	924,387	392	0	924,511
	1995	Mar	905,048	31	875,853	644.5	2.4	875,737
1995	Feb	947,752	28	1,015,448	1013.5	0	1,015,423	
1995	Jan	987,428	31	955,576	1186.5	0	955,424	
1994	Dec	1,043,410	31	1,009,752	946.5	0	1,009,519	
1994	Nov	868,364	30	868,364	516	1.5	868,216	
1994	Oct	746,250	31	722,177	135.5	56.7	722,090	
1994	Sep	1,018,417	30	1,018,417	16	264.4	960,792	
1994	Aug	748,133	31	724,000	0	346	771,097	
1994	Jul	814,300	31	788,032	0	402.8	831,251	
1994	Jun	769,500	30	769,500	0	379.9	735,939	
1993/1994	1994	May	871,200	31	843,097	37.5	171.3	825,841
	1994	Apr	847,200	30	847,200	289.5	21.2	847,202
	1994	Mar	959,400	31	928,452	630	0	928,318
	1994	Feb	936,600	28	1,003,500	1161.5	0	1,003,651
	1994	Jan	870,500	31	842,419	1572	0	842,726
	1993	Dec	915,796	31	886,254	1052.5	0	886,148

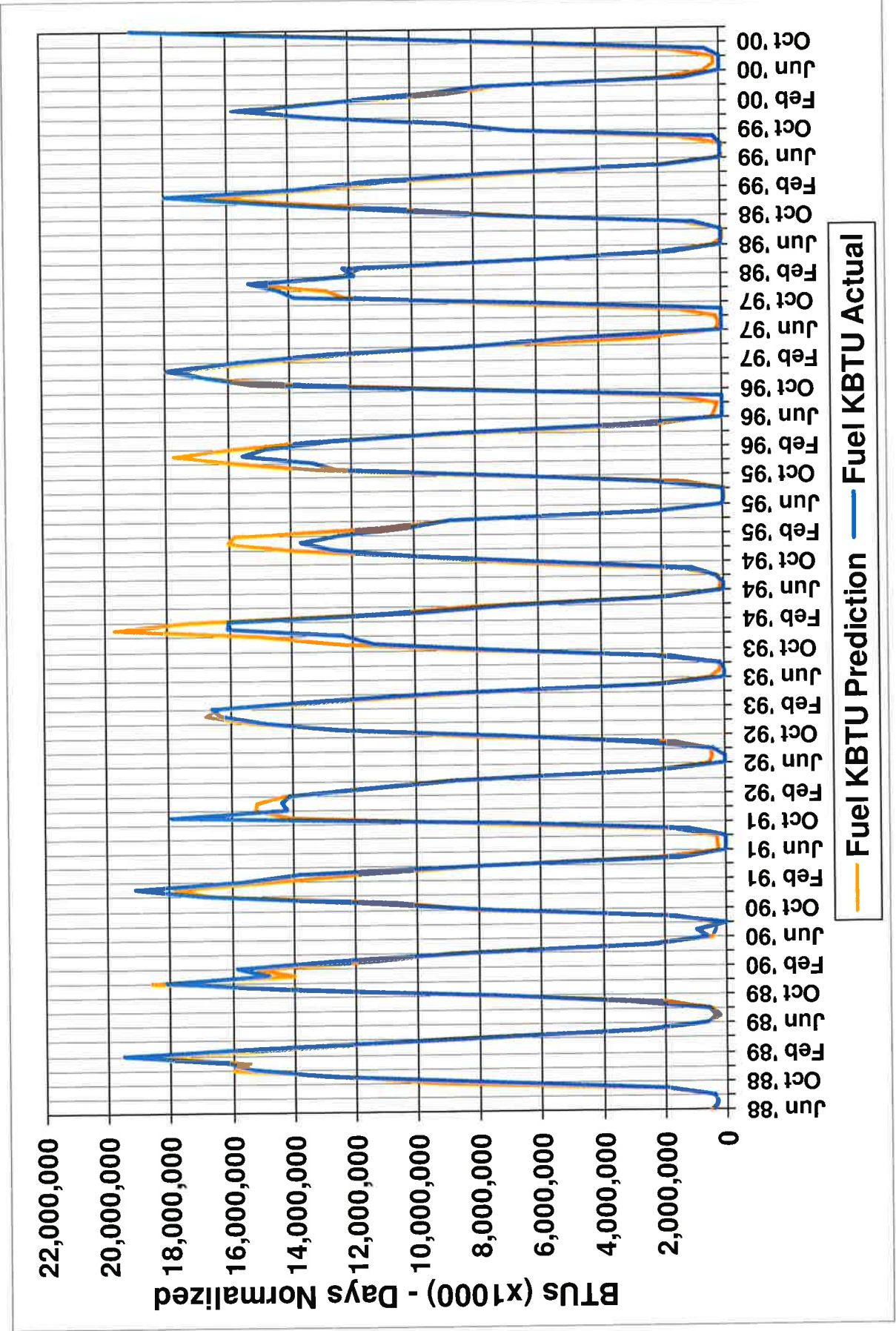
Fiscal Year	Year	Month	Electric Consumption KWH	Billing Days	KWH - Days Normalized	Heating Degree Days	THI Days	KWH - Days and Wthr Normalized
	1993	Nov	896,884	30	896,884	733	0	896,994
	1993	Oct	935,180	31	905,013	271.5	24.7	905,087
	1993	Sep	929,463	30	929,463	77	90.4	1,009,567
	1993	Aug	757,950	31	733,500	0	423.7	719,094
	1993	Jul	741,600	31	717,677	0	416.7	749,893
	1993	Jun	722,400	30	722,400	6	269.6	776,146
1992/1993								
	1993	May	827,850	31	801,145	44.5	115.4	828,137
	1993	Apr	897,750	30	897,750	328	8.2	897,798
	1993	Mar	1,053,091	31	1,019,120	796.5	0	1,019,184
	1993	Feb	924,509	28	990,545	1053	0	990,568
	1993	Jan	914,400	31	884,903	1229	0	884,802
	1992	Dec	973,800	31	942,387	1048.5	0	942,276
	1992	Nov	927,000	30	927,000	731	0	927,108
	1992	Oct	914,000	31	884,516	274	49.2	884,593
	1992	Sep	730,000	30	730,000	13	172.8	744,881
	1992	Aug	780,069	31	754,905	0	302.7	836,276
	1992	Jul	763,131	31	738,514	0	311.9	853,684
	1992	Jun	715,200	30	715,200	9	270	768,629
1991/1992								
	1992	May	811,200	31	785,032	42	172.9	766,510
	1992	Apr	952,800	30	952,800	359	21.6	952,885
	1992	Mar	942,909	31	912,493	659.5	0	912,394
	1992	Feb	902,691	29	933,818	790	0	933,528
	1992	Jan	831,223	31	804,409	1033.5	0	804,076
	1991	Dec	824,777	31	798,171	1036	0	798,046
	1991	Nov	890,400	30	890,400	912.5	0	890,723
	1991	Oct	873,600	31	845,419	253.5	26	845,472
	1991	Sep	976,800	30	976,800	67.5	187.8	979,808

Fiscal Year	Year	Month	Electric Consumption KWH	Billing Days	KWH - Days Normalized	Heating Degree Days	THI Days	KWH - Days and Wthr Normalized
	1991	Aug	878,400	31	850,065	0	424.9	834,709
	1991	Jul	1,024,800	31	991,742	0	442.3	1,003,694
	1991	Jun	884,471	30	884,471	0	445.7	798,826
1990/1991								
	1991	May	1,120,558	31	1,084,411	86.5	263	994,571
	1991	Apr	841,371	30	841,371	217	49.2	841,287
	1991	Mar	758,400	31	733,935	642	3.6	733,816
	1991	Feb	854,400	28	915,429	826	0	915,181
	1991	Jan	1,117,560	31	1,081,510	1311	0	1,081,506
	1990	Dec	846,628	31	819,318	1182	0	819,365
	1990	Nov	853,412	30	853,412	518	8.2	853,266
	1990	Oct	825,600	31	798,968	225	22.8	798,987
	1990	Sep	890,400	30	890,400	26.5	260.3	836,021
	1990	Aug	699,075	31	676,524	0	419.6	665,363
	1990	Jul	839,325	31	812,250	0	429.1	834,651
	1990	Jun	717,600	30	717,600	5.5	375.4	687,601
1989/1990								
	1990	May	823,059	31	796,509	66.5	97.2	837,906
	1990	Apr	808,941	30	808,941	309.5	77.8	808,967
	1990	Mar	825,848	31	799,208	578.5	4.3	799,013
	1990	Feb	813,352	28	871,448	858	0	871,239
	1990	Jan	942,733	31	912,323	869.5	0	911,794
	1989	Dec	856,612	31	828,979	1372.5	0	829,253
	1989	Nov	857,455	30	857,455	769	0	857,607
	1989	Oct	825,600	31	798,968	198.5	57.5	798,955
	1989	Sep	840,000	30	840,000	31	193.8	838,259
	1989	Aug	731,400	31	707,806	0	412.8	702,028
	1989	Jul	725,400	31	702,000	0	526.2	647,542
	1989	Jun	564,000	30	564,000	2	323.1	575,398

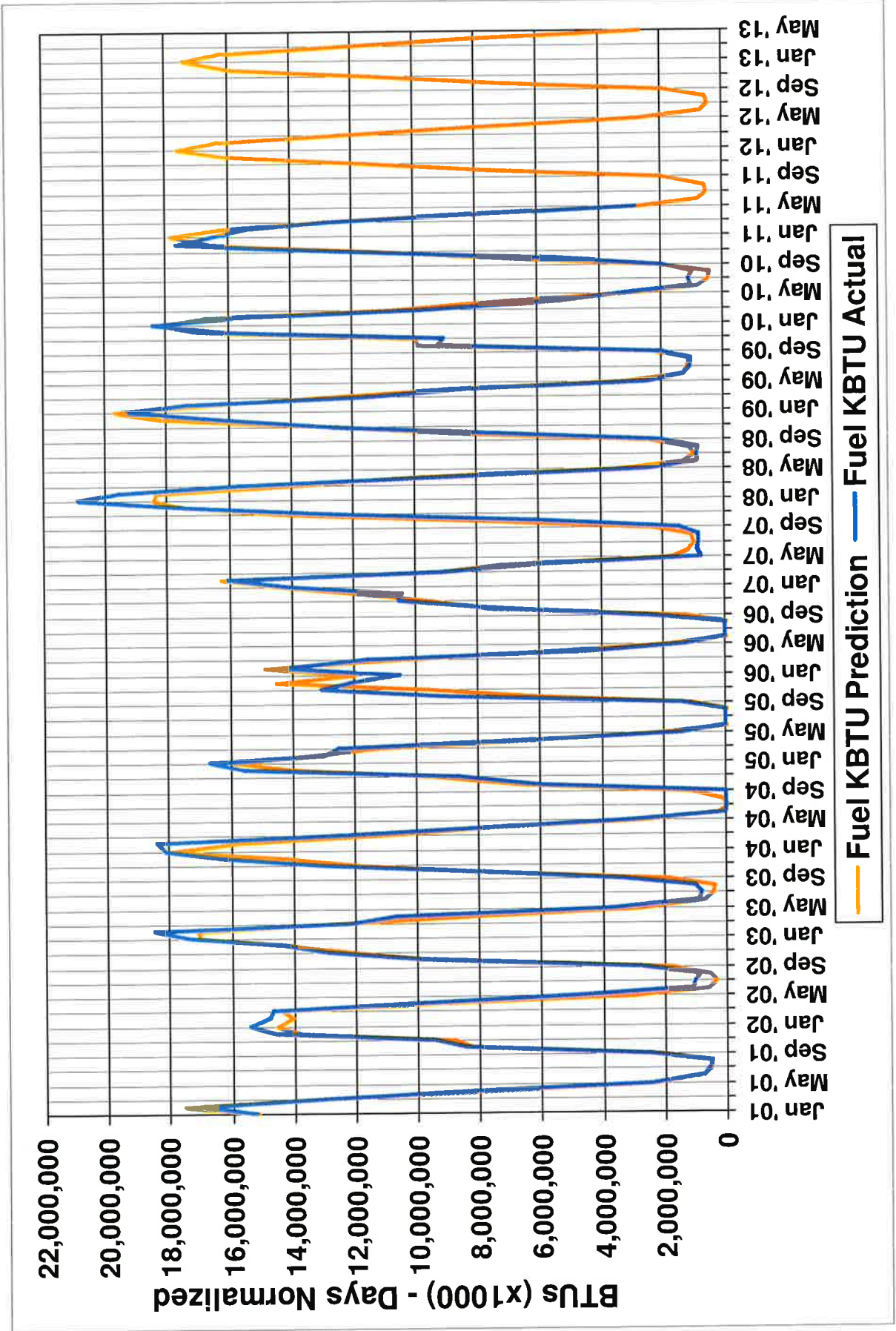
Fiscal Year	Year	Month	Electric Consumption KWH	Billing Days	KWH - Days Normalized	Heating Degree Days	THI Days	KWH - Days and Wthr Normalized
1988/1989								
1989		May	780,000	31	754,839	70.5	148.3	755,789
1989		Apr	800,000	30	800,000	294	21.9	800,007
1989		Mar	840,000	31	812,903	879.5	7.6	813,066
1989		Feb	820,000	28	878,571	1240.5	0	878,816
1989		Jan	820,000	31	793,548	1008.5	0	793,185
1988		Dec	750,000	31	725,806	1067	0	725,717
1988		Nov	830,000	30	830,000	657	0	830,020
1988		Oct	830,000	31	803,226	326.5	15.7	803,365
1988		Sep	820,000	30	820,000	9	206.2	808,443
1988		Aug	800,000	31	774,194	0	470.5	722,743
1988		Jul	775,000	31	750,000	0	537.2	686,835
1988		Jun	715,000	30	715,000	0	438.7	634,896

Note: Days are normalized to 30 days per month.

Macalester College Actual and Predicted Fuel BTU Consumption

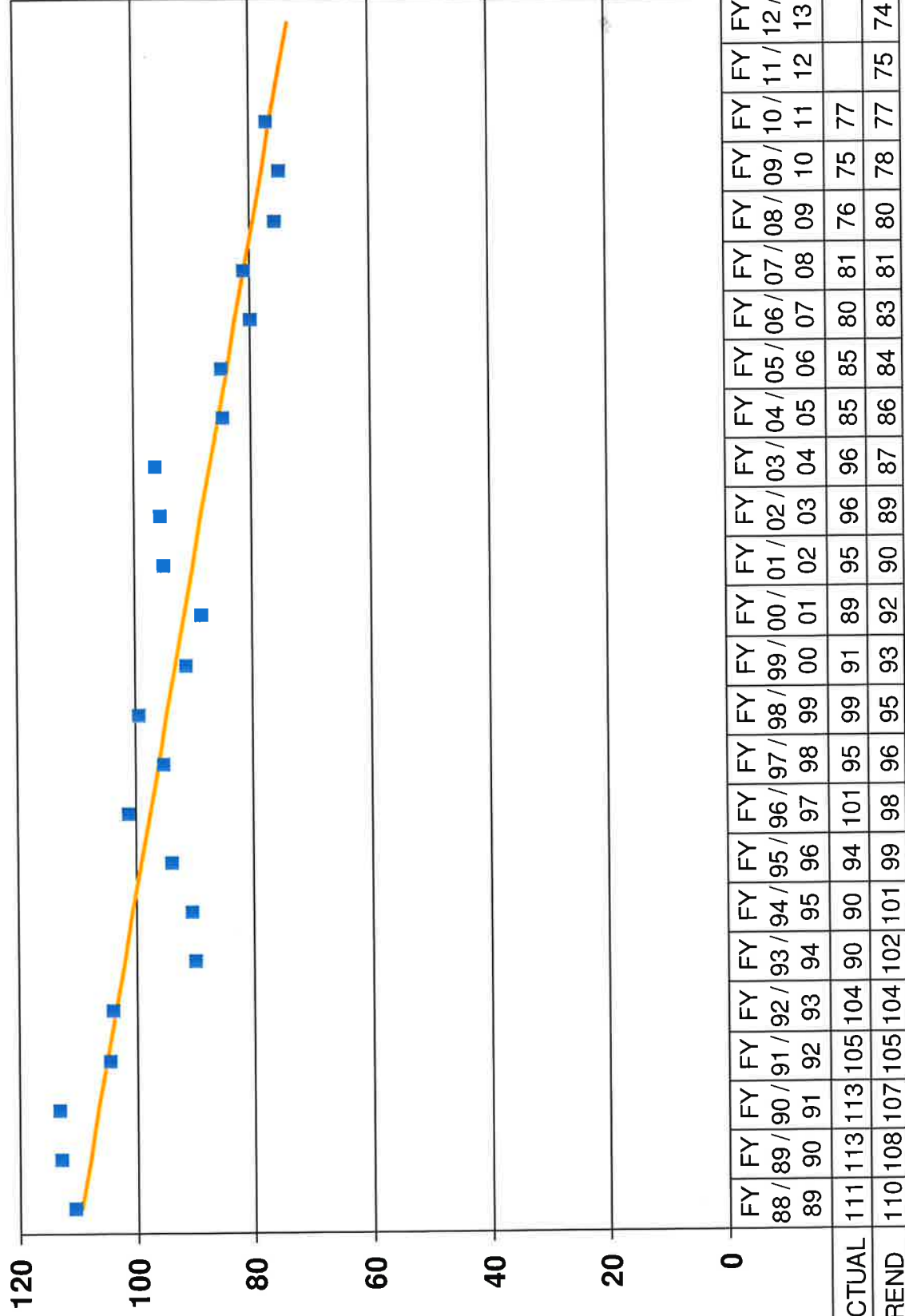


Macalester College Actual and Predicted Fuel BTU Consumption

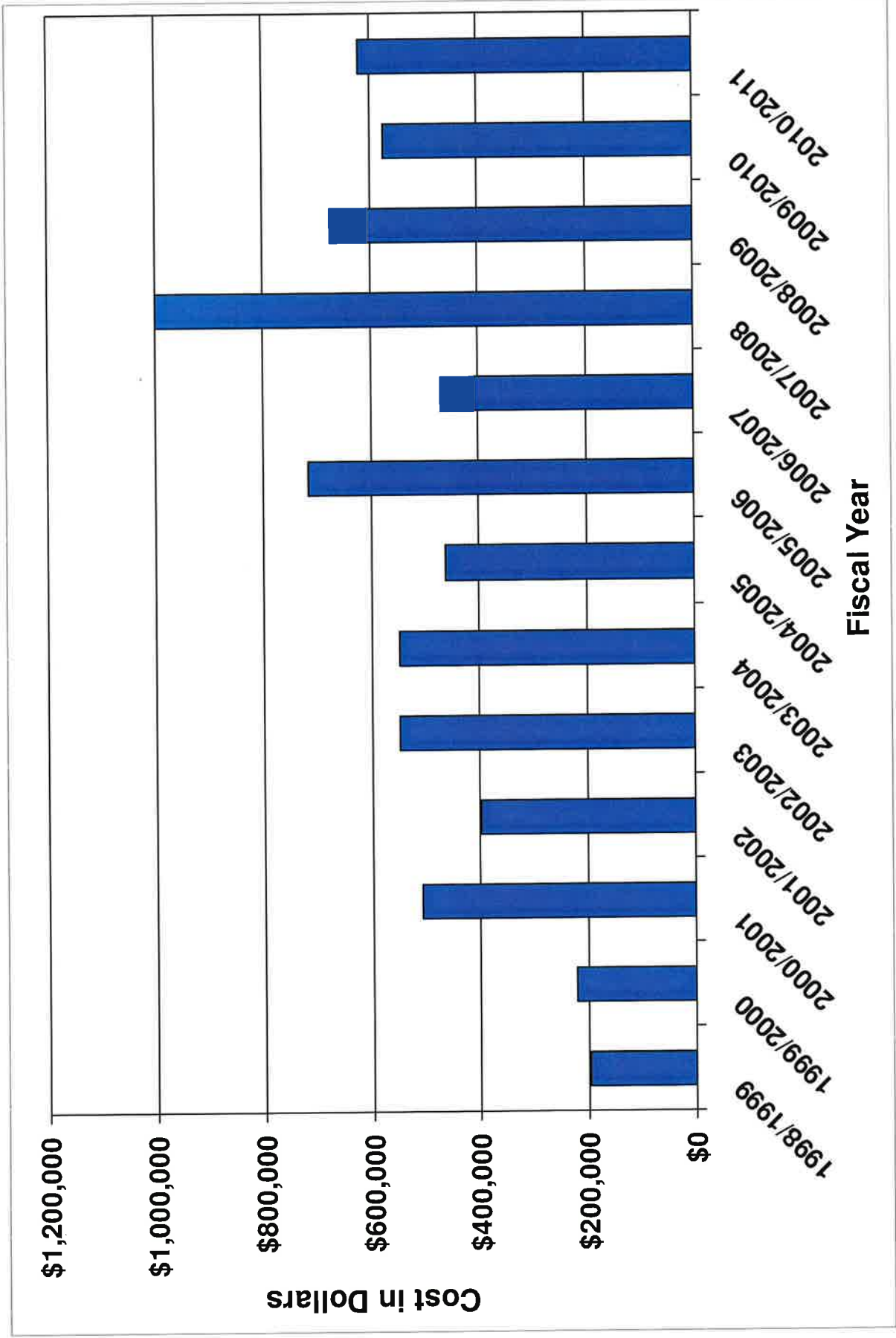


Macalester College FY Weather Normalized Fuel BTU Consumption per GSF

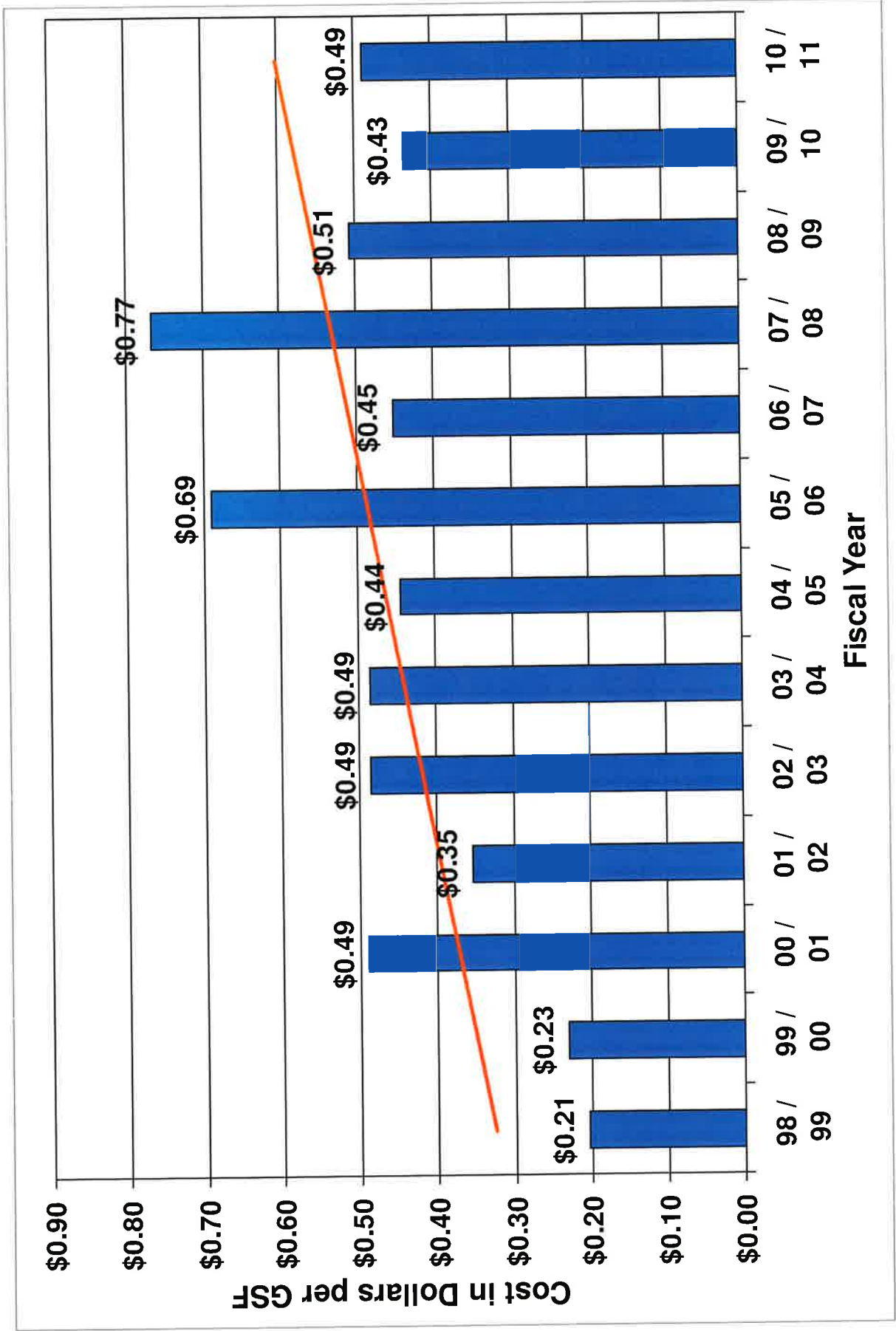
BTUs (x1000) per GSF - Weather and Days Normalized



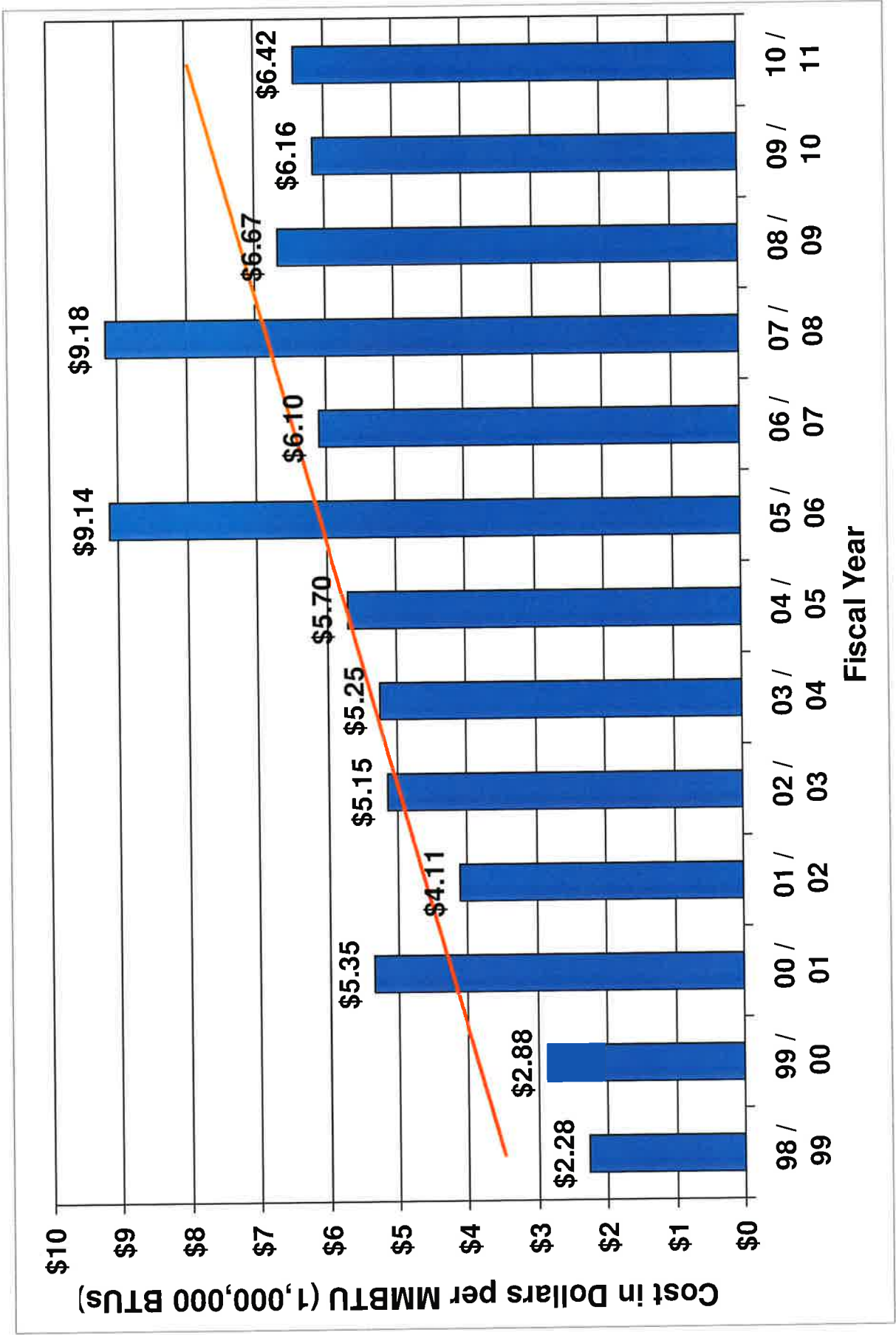
Macalester College Fiscal Year Fuel Cost



Macalester College Fiscal Year Fuel Cost per GSF



Macalester College Fiscal Year Fuel Cost per MMBTU



Macalester College

Fiscal Year Fuel BTU Consumption

Fiscal Year	Fuel KBTUs	Fuel Cost	Cost Per KBTU	Billing Days	Fuel KBTUs - Days Norm	Fuel KBTUs - Wthr/Days Norm	Gross Sq Feet	KBTUs per GSF - Days Norm	KBTUs per GSF - Wthr/Days Norm
2010/2011	96,424,324	\$618,876	\$0.0064	365	96,424,324	97,678,357	1,266,213	76.15	77.14
2009/2010	93,292,051	\$574,878	\$0.0062	365	93,292,051	99,387,088	1,321,773	70.58	75.19
2008/2009	100,735,921	\$672,164	\$0.0067	365	100,735,921	100,372,072	1,321,773	76.21	75.94
2007/2008	109,022,000	\$1,000,534	\$0.0092	366	108,724,126	105,826,254	1,304,773	83.33	81.11
2006/2007	77,067,300	\$469,787	\$0.0061	365	77,067,300	83,138,558	1,038,457	74.21	80.06
2005/2006	78,282,150	\$715,477	\$0.0091	365	78,282,150	88,238,198	1,038,457	75.38	84.97
2004/2005	81,052,800	\$461,910	\$0.0057	365	81,052,800	88,011,833	1,038,457	78.05	84.75
2003/2004	104,530,396	\$548,523	\$0.0052	366	104,244,794	108,714,626	1,129,773	92.27	96.23
2002/2003	106,465,550	\$548,561	\$0.0052	365	106,465,550	107,951,787	1,129,773	94.24	95.55
2001/2002	97,156,709	\$399,452	\$0.0041	365	97,156,709	107,148,395	1,129,773	86.00	94.84
2000/2001	94,701,500	\$506,963	\$0.0054	365	94,701,500	92,148,310	1,038,457	91.19	88.74
1999/2000	76,959,815	\$221,395	\$0.0029	366	76,749,542	87,818,130	962,392	79.75	91.25
1998/1999	86,679,236	\$197,453	\$0.0023	365	86,679,236	95,649,892	962,392	90.07	99.39
1997/1998	82,412,800			365	82,412,800	91,602,101	962,392	85.63	95.18
1996/1997	99,991,867			365	99,991,867	97,325,803	962,392	103.90	101.13
1995/1996	91,539,850			366	91,289,741	85,483,897	910,907	100.22	93.84
1994/1995	77,444,300			365	77,444,300	82,391,159	910,907	85.02	90.45
1993/1994	85,172,550			365	85,172,550	82,025,929	910,907	93.50	90.05
1992/1993	95,978,050			365	95,978,050	94,881,133	910,907	105.37	104.16
1991/1992	92,268,050			366	92,015,952	95,302,703	910,907	101.02	104.62
1990/1991	98,738,700			365	98,738,700	103,099,599	910,907	108.40	113.18

Fiscal Year	Fuel KBTUs	Fuel Cost	Cost Per KBTU	Billing Days	Fuel KBTUs -		Gross Sq Feet	KBTUs per GSF -	
					Days Norm	Wthr/Days Norm		Days Norm	Wthr/Days Norm
1989/1990	99,062,300			365	99,062,300	102,845,899	910,907	108.75	112.90
1988/1989	101,062,000			365	101,062,000	100,816,338	910,907	110.95	110.68

Note: 1 KBTU is equal to 1,000 BTUs.

Macalester College

Monthly Fuel BTU Consumption

Fiscal Year	Year	Month	Fuel KBTUs	Billing Days	Fuel KBTUs - Days Normalized	HDD	THI	Fuel KBTUs - Wthr and Days Normalized
2010/2011								
2011		May	2,907,500	31	2,813,710	59.9	145.7	2,806,227
2011		Apr	7,779,000	30	7,779,000	270.6	5.6	7,934,428
2011		Mar	13,158,800	31	12,734,323	777.3	0	12,419,851
2011		Feb	14,367,100	28	15,393,321	1005	0	15,658,995
2011		Jan	17,042,240	31	16,492,490	1322.1	0	16,421,102
2010		Dec	18,218,500	31	17,630,806	1174.8	0	17,334,408
2010		Nov	12,074,784	30	12,074,784	590.9	3.7	12,521,189
2010		Oct	5,725,200	31	5,540,516	132.4	71.1	6,233,618
2010		Sep	1,975,700	30	1,975,700	11.1	163.4	1,920,174
2010		Aug	999,700	31	967,452	0	537	1,226,375
2010		Jul	1,148,400	31	1,111,355	0	528	1,250,366
2010		Jun	1,027,400	30	1,027,400	0	360.4	1,072,490
2009/2010								
2010		May	3,445,900	31	3,334,742	77.6	192.3	3,419,015
2010		Apr	5,208,800	30	5,208,800	64.5	50.2	7,226,657
2010		Mar	9,964,400	31	9,642,968	456.5	7.4	12,227,416
2010		Feb	14,722,300	28	15,773,893	980.5	0	16,260,962
2010		Jan	19,060,420	31	18,445,568	1293.9	0	18,629,009
2009		Dec	16,872,650	31	16,328,371	1160.9	0	16,157,581
2009		Nov	9,029,900	30	9,029,900	373.8	0.4	11,438,136
2009		Oct	9,514,900	31	9,207,968	362.5	0.5	7,821,764
2009		Sep	1,991,200	30	1,991,200	14.9	299.7	2,204,049
2009		Aug	1,082,000	31	1,047,097	0	372.3	981,726

Fiscal Year	Year	Month	Fuel KBTUs	Billing Days	Fuel KBTUs - Days Normalized	HDD	THI	Fuel KBTUs - Wthr and Days Normalized
2008/2009	2009	Jul	1,087,081	31	1,052,014	0	359.4	859,052
	2009	Jun	1,312,500	30	1,312,500	10.9	302	1,242,601
	2009	May	2,494,500	31	2,414,032	25.9	138.8	2,392,964
	2009	Apr	8,320,900	30	8,320,900	245.5	19.8	8,703,145
	2009	Mar	11,928,800	31	11,544,000	690.1	0	12,017,514
	2009	Feb	16,218,850	28	17,377,339	951.3	0	18,128,275
	2009	Jan	19,871,900	31	19,230,871	1433.6	0	18,151,909
	2008	Dec	17,031,050	31	16,481,661	1275.8	0	15,272,573
	2008	Nov	12,687,300	30	12,687,300	632.9	23.3	12,754,170
	2008	Oct	7,503,121	31	7,261,085	185.4	41.4	7,475,251
	2008	Sep	2,008,100	30	2,008,100	4.3	231.1	2,085,876
	2008	Aug	884,900	31	856,355	0	426.4	897,507
2008	Jul	917,300	31	887,710	0	490.4	952,687	
2008	Jun	869,200	30	869,200	0	324.4	843,406	
2007/2008	2008	May	2,470,900	31	2,391,194	43	73	2,240,565
	2008	Apr	8,626,700	30	8,626,700	344.6	17.5	8,113,425
	2008	Mar	16,218,750	31	15,695,565	818.4	0	15,009,692
	2008	Feb	18,926,242	29	19,578,871	1142.3	0	18,603,829
	2008	Jan	21,593,786	31	20,897,212	1294.1	0	21,078,847
	2007	Dec	18,086,998	31	17,503,546	1179	0	17,169,195
	2007	Nov	12,730,982	30	12,730,982	818.4	0	11,121,576
	2007	Oct	6,286,242	31	6,083,460	127	101.1	6,825,359
	2007	Sep	1,497,100	30	1,497,100	10.9	261.3	1,634,339
	2007	Aug	858,700	31	831,000	0	431.5	882,194
	2007	Jul	857,500	31	829,839	0	502	917,656
	2007	Jun	868,100	30	868,100	0	405.6	1,002,189

Fiscal Year	Year	Month	Fuel KBTUs	Billing Days	Fuel KBTUs - Days Normalized	HDD	THI	Fuel KBTUs - Wthr and Days Normalized
2006/2007								
2007	2007	May	773,000	31	748,065	6.13	220.7	888,257
2007	2007	Apr	6,122,000	30	6,122,000	310	49.5	5,921,389
2007	2007	Mar	9,382,500	31	9,079,839	534.5	17.8	10,959,437
2007	2007	Feb	14,988,550	28	16,059,161	1159.6	0	14,927,787
2007	2007	Jan	14,485,700	31	14,018,419	1083.9	0	16,099,532
2006	2006	Dec	10,780,450	31	10,432,694	796.8	0	13,552,104
2006	2006	Nov	10,568,000	30	10,568,000	555.9	4.4	11,330,683
2006	2006	Oct	7,475,000	31	7,233,871	339.6	42.2	6,054,604
2006	2006	Sep	2,489,000	30	2,489,000	41.5	163.1	2,432,884
2006	2006	Aug	0	31	0	0	440.4	68,718
2006	2006	Jul	0	31	0	0	575.5	232,539
2006	2006	Jun	3,100	30	3,100	0	371.8	70,637
2005/2006								
2006	2006	May	1,362,000	31	1,318,065	43.4	208.2	1,433,645
2006	2006	Apr	4,408,000	30	4,408,000	117.8	48.7	5,944,210
2006	2006	Mar	11,956,750	31	11,571,048	647.4	0	12,430,422
2006	2006	Feb	13,390,150	28	14,346,589	987.8	0	14,767,692
2006	2006	Jan	10,872,250	31	10,521,532	807.8	0	15,097,632
2005	2005	Dec	12,505,000	31	12,101,613	1088.7	0	12,583,260
2005	2005	Nov	13,070,000	30	13,070,000	543.2	0.6	13,947,447
2005	2005	Oct	9,351,000	31	9,049,355	173.8	84.4	9,368,344
2005	2005	Sep	1,367,000	30	1,367,000	5.3	296.6	1,573,745
2005	2005	Aug	0	31	0	0	421.7	31,898
2005	2005	Jul	0	31	0	0	527.8	138,618
2005	2005	Jun	0	30	0	0	440.6	203,004
2005	2005	May	1,464,000	31	1,416,774	98.6	127.1	1,372,669

Fiscal Year	Year	Month	Fuel KBTUs	Billing Days	Fuel KBTUs - Days Normalized	HDD	THI	Fuel KBTUs - Wthr and Days Normalized
2003/2004	2005	Apr	6,362,000	30	6,362,000	156.4	61.1	7,549,400
	2005	Mar	12,927,450	31	12,510,435	713.5	2.8	12,772,495
	2005	Feb	12,070,350	28	12,932,518	801	0	15,041,644
	2005	Jan	17,237,150	31	16,681,113	1227.6	0	17,463,676
	2004	Dec	16,086,050	31	15,567,145	1010.8	0	16,752,738
	2004	Nov	8,603,800	30	8,603,800	509.4	0	9,786,682
	2004	Oct	6,286,000	31	6,083,226	194.6	40.5	6,214,256
	2004	Sep	4,000	30	4,000	1.3	312.4	241,855
	2004	Aug	0	31	0	0.1	312.5	0
	2004	Jul	0	31	0	0	446.9	0
	2004	Jun	12,000	30	12,000	0	280.4	0
	2002/2003	2004	May	3,274,100	31	3,168,484	60.5	124
2004		Apr	7,782,500	30	7,782,500	206.5	37.3	8,517,170
2004		Mar	12,937,550	31	12,520,210	589.6	5.4	13,901,895
2004		Feb	17,782,946	29	18,396,151	950.7	0	19,152,509
2004		Jan	18,702,050	31	18,098,758	1348.8	0	17,786,094
2003		Dec	16,791,250	31	16,249,597	925.9	0	18,202,391
2003		Nov	13,074,400	30	13,074,400	674.2	0	12,768,062
2003		Oct	8,079,000	31	7,818,387	207.2	66.3	7,835,557
2003		Sep	3,332,900	30	3,332,900	52.8	218.2	3,385,275
2003		Aug	1,063,100	31	1,028,806	0	489.4	1,194,006
2003		Jul	817,400	31	791,032	0	473.8	823,324
2003		Jun	893,200	30	893,200	0	326.2	870,950
2003	May	3,878,900	31	3,753,774	27.6	110.4	3,676,786	
2003	Apr	10,681,100	30	10,681,100	251.5	32.3	11,009,126	
2003	Mar	12,559,500	31	12,154,355	735.1	0.9	12,221,225	

Fiscal Year	Year	Month	Fuel KBTUs	Billing Days	Fuel KBTUs - Days Normalized	HDD	THI	Fuel KBTUs - Wthr and Days Normalized
2001/2002	2003	Feb	17,266,600	28	18,499,929	1085.8	0	18,035,451
	2003	Jan	17,931,100	31	17,352,677	1221.6	0	18,189,460
	2002	Dec	14,857,150	31	14,377,887	889.4	0	16,660,515
	2002	Nov	12,975,800	30	12,975,800	668.8	0	12,718,259
	2002	Oct	10,414,700	31	10,078,742	416.6	17.6	8,203,662
	2002	Sep	2,789,100	30	2,789,100	28.5	285	2,973,005
	2002	Aug	915,800	31	886,258	0	426.9	928,395
	2002	Jul	1,067,400	31	1,032,968	0	558.2	1,231,443
	2002	Jun	1,128,400	30	1,128,400	4.5	409.3	1,269,774
	2002	May	4,931,400	31	4,772,323	117.2	93.2	4,661,468
	2002	Apr	9,777,469	30	9,777,469	345.8	50	9,253,350
	2002	Mar	15,187,200	31	14,697,290	920.3	0	13,090,595
2000/2001	2002	Feb	13,794,400	28	14,779,714	730	0	17,530,434
	2002	Jan	15,958,700	31	15,443,903	932.1	0	18,896,762
	2001	Dec	15,136,440	31	14,648,168	840.3	0	17,374,489
	2001	Nov	9,443,000	30	9,443,000	285.7	22.8	12,647,354
	2001	Oct	8,690,800	31	8,410,452	226.4	30.6	8,254,120
	2001	Sep	2,433,900	30	2,433,900	24.2	193.5	2,437,641
	2001	Aug	513,200	31	496,645	0	478	639,398
	2001	Jul	563,700	31	545,516	0	510.2	649,479
	2001	Jun	726,500	30	726,500	1.9	356.1	763,123
	2001	May	2,535,700	31	2,453,903	34.3	157.1	2,468,868
	2001	Apr	8,176,900	30	8,176,900	257.1	44.3	8,454,322
	2001	Mar	13,307,450	31	12,878,177	839.2	0	12,004,345
2001	Feb	15,803,900	28	16,932,750	1189.7	0	15,529,377	
2001	Jan	15,766,350	31	15,257,758	1070.1	0	17,463,575	

Fiscal Year	Year	Month	Fuel KBTUs	Billing Days	Fuel KBTUs - Days Normalized	HDD	THI	Fuel KBTUs - Wthr and Days Normalized
	2000	Dec	19,682,500	31	19,047,581	1455.7	0	16,212,821
	2000	Nov	12,605,900	30	12,605,900	722.2	8.9	11,865,808
	2000	Oct	6,354,800	31	6,149,806	138	85	6,792,304
	2000	Sep	468,000	30	468,000	35.3	191.5	467,803
	2000	Aug	0	31	0	0	451.2	89,983
	2000	Jul	0	31	0	0	457.4	0
	2000	Jun	0	30	0	2.3	297.5	0
1999/2000								
	2000	May	1,262,900	31	1,222,161	24.6	190.1	1,302,103
	2000	Apr	7,720,300	30	7,720,300	274.1	24.1	7,844,100
	2000	Mar	9,955,900	31	9,634,742	438.3	16	12,383,655
	2000	Feb	12,526,905	29	12,958,867	771.6	0	15,333,668
	2000	Jan	16,118,600	31	15,598,645	1200.3	0	16,627,906
	1999	Dec	13,369,310	31	12,938,042	900.6	0	15,119,461
	1999	Nov	8,867,600	30	8,867,600	406	10.1	10,984,859
	1999	Oct	6,917,400	31	6,694,258	194.7	26.5	6,824,384
	1999	Sep	220,900	30	220,900	18.8	186.7	211,252
	1999	Aug	0	31	0	0	413.6	15,949
	1999	Jul	0	31	0	0	545.9	174,257
	1999	Jun	0	30	0	5.2	325.9	0
1998/1999								
	1999	May	1,964,300	31	1,900,935	23.9	184.3	1,969,457
	1999	Apr	7,595,200	30	7,595,200	189.8	13.9	8,480,780
	1999	Mar	11,700,800	31	11,323,355	628.6	4	12,352,616
	1999	Feb	12,758,000	28	13,669,286	745.5	0	16,279,940
	1999	Jan	18,574,200	31	17,975,032	1279.8	0	18,285,889
	1998	Dec	15,061,736	31	14,575,874	920.6	0	16,576,562
	1998	Nov	11,084,400	30	11,084,400	519.7	4.8	12,174,206

Fiscal Year	Year	Month	Fuel KBTUs	Billing Days	Fuel KBTUs - Days Normalized	HDD	THI	Fuel KBTUs - Wthr and Days Normalized
	1998	Oct	7,039,200	31	6,812,129	132.4	49	7,505,231
	1998	Sep	901,400	30	901,400	5	302.5	1,119,762
	1998	Aug	0	31	0	0	446.3	80,335
	1998	Jul	0	31	0	0	466.3	17,524
	1998	Jun	0	30	0	5.7	292.8	0
1997/1998								
	1998	May	1,625,500	31	1,573,065	2.3	247.9	1,766,814
	1998	Apr	6,649,800	30	6,649,800	148.9	26	7,904,974
	1998	Mar	12,650,600	31	12,242,516	712.8	6.8	12,510,901
	1998	Feb	11,056,800	28	11,846,571	623	0	15,564,200
	1998	Jan	15,811,200	31	15,301,161	1088.5	0	17,340,706
	1997	Dec	14,767,600	31	14,291,226	831.5	0	17,097,069
	1997	Nov	13,793,300	30	13,793,300	760.5	0	12,707,109
	1997	Oct	6,058,000	31	5,862,581	221	100.7	5,755,046
	1997	Sep	0	30	0	3	242.1	99,435
	1997	Aug	0	31	0	0	372.9	0
	1997	Jul	0	31	0	0	432	0
	1997	Jun	0	30	0	0	377	77,776
1996/1997								
	1997	May	5,218,700	31	5,050,355	83.5	58.7	4,871,570
	1997	Apr	7,953,100	30	7,953,100	308	8.6	7,770,562
	1997	Mar	13,176,300	31	12,751,258	746.5	0	12,715,112
	1997	Feb	14,592,600	28	15,634,929	924.5	0	16,628,043
	1997	Jan	18,572,500	31	17,973,387	1356	0	17,595,660
	1996	Dec	17,210,567	31	16,655,387	1239.5	0	15,774,326
	1996	Nov	15,131,400	30	15,131,400	869	0	13,064,745
	1996	Oct	8,136,700	31	7,874,226	200	48	7,956,458
	1996	Sep	0	30	0	12.5	207.8	31,898

Fiscal Year	Year	Month	Fuel KBTUs	Billing Days	Fuel KBTUs - Days Normalized	HDD	THI	Fuel KBTUs - Wthr and Days Normalized
	1996	Aug	0	31	0	0	429.1	46,468
	1996	Jul	0	31	0	0	390	0
	1996	Jun	0	30	0	0	344.7	14,177
1995/1996								
	1996	May	3,371,000	31	3,262,258	84	98.1	3,161,051
	1996	Apr	9,072,200	30	9,072,200	383.5	2.8	8,207,404
	1996	Mar	13,114,750	31	12,691,694	907.5	0	11,200,666
	1996	Feb	14,292,000	29	14,784,828	1054	0	14,607,712
	1996	Jan	16,049,250	31	15,531,532	1396	0	14,792,344
	1995	Dec	13,706,650	31	13,264,500	1159	0	13,110,879
	1995	Nov	12,496,700	30	12,496,700	876	0	10,366,790
	1995	Oct	7,187,400	31	6,955,548	252.5	37.8	6,563,363
	1995	Sep	2,249,900	30	2,249,900	73.5	195.4	2,257,382
	1995	Aug	0	31	0	0	503	191,978
	1995	Jul	0	31	0	0	454.5	0
	1995	Jun	0	30	0	7	394.1	111,445
1994/1995								
	1995	May	2,351,200	31	2,275,355	51	82.1	2,142,644
	1995	Apr	8,831,100	30	8,831,100	392	0	7,889,493
	1995	Mar	10,551,550	31	10,211,177	644.5	2.4	11,096,757
	1995	Feb	11,593,750	28	12,421,875	1013.5	0	12,610,738
	1995	Jan	14,128,250	31	13,672,500	1186.5	0	14,826,465
	1994	Dec	13,049,450	31	12,628,500	946.5	0	14,395,142
	1994	Nov	9,982,500	30	9,982,500	516	1.5	11,105,741
	1994	Oct	5,649,800	31	5,467,548	135.5	56.7	6,132,637
	1994	Sep	1,031,300	30	1,031,300	16	264.4	1,174,643
	1994	Aug	275,400	31	266,516	0	346	149,361
	1994	Jul	0	31	0	0	402.8	0

Fiscal Year	Year	Month	Fuel KBTUs	Billing Days	Fuel KBTUs - Days Normalized	HDD	THI	Fuel KBTUs - Wthr and Days Normalized
1993/1994	1994	Jun	0	30	0	0	379.9	83,486
	1994	May	1,961,900	31	1,898,613	37.5	171.3	1,941,537
	1994	Apr	6,951,300	30	6,951,300	289.5	21.2	6,935,938
	1994	Mar	10,544,850	31	10,204,694	630	0	11,221,303
	1994	Feb	14,967,450	28	16,036,554	1161.5	0	14,888,010
	1994	Jan	16,627,050	31	16,090,694	1572	0	13,761,076
	1993	Dec	12,733,250	31	12,322,500	1052.5	0	13,131,270
	1993	Nov	11,335,350	30	11,335,350	733	0	10,497,664
	1993	Oct	7,587,500	31	7,342,742	271.5	24.7	6,778,862
	1993	Sep	2,304,800	30	2,304,800	77	90.4	2,105,537
	1993	Aug	159,100	31	153,968	0	423.7	189,804
	1993	Jul	0	31	0	0	416.7	0
1992/1993	1993	Jun	0	30	0	6	269.6	0
	1993	May	2,144,600	31	2,075,419	44.5	115.4	2,008,276
	1993	Apr	9,170,200	30	9,170,200	328	8.2	8,806,931
	1993	Mar	13,671,000	31	13,230,000	796.5	0	12,742,027
	1993	Feb	15,457,650	28	16,561,768	1053	0	16,393,688
	1993	Jan	16,846,200	31	16,302,774	1229	0	17,072,687
	1992	Dec	15,372,450	31	14,876,565	1048.5	0	15,721,480
	1992	Nov	12,550,350	30	12,550,350	731	0	11,730,737
	1992	Oct	7,392,800	31	7,154,323	274	49.2	6,567,852
	1992	Sep	2,963,700	30	2,963,700	13	172.8	2,926,683
	1992	Aug	409,100	31	395,903	0	302.7	193,490
	1992	Jul	0	31	0	0	311.9	0
1992	Jun	0	30	0	9	270	0	
1991/1992								

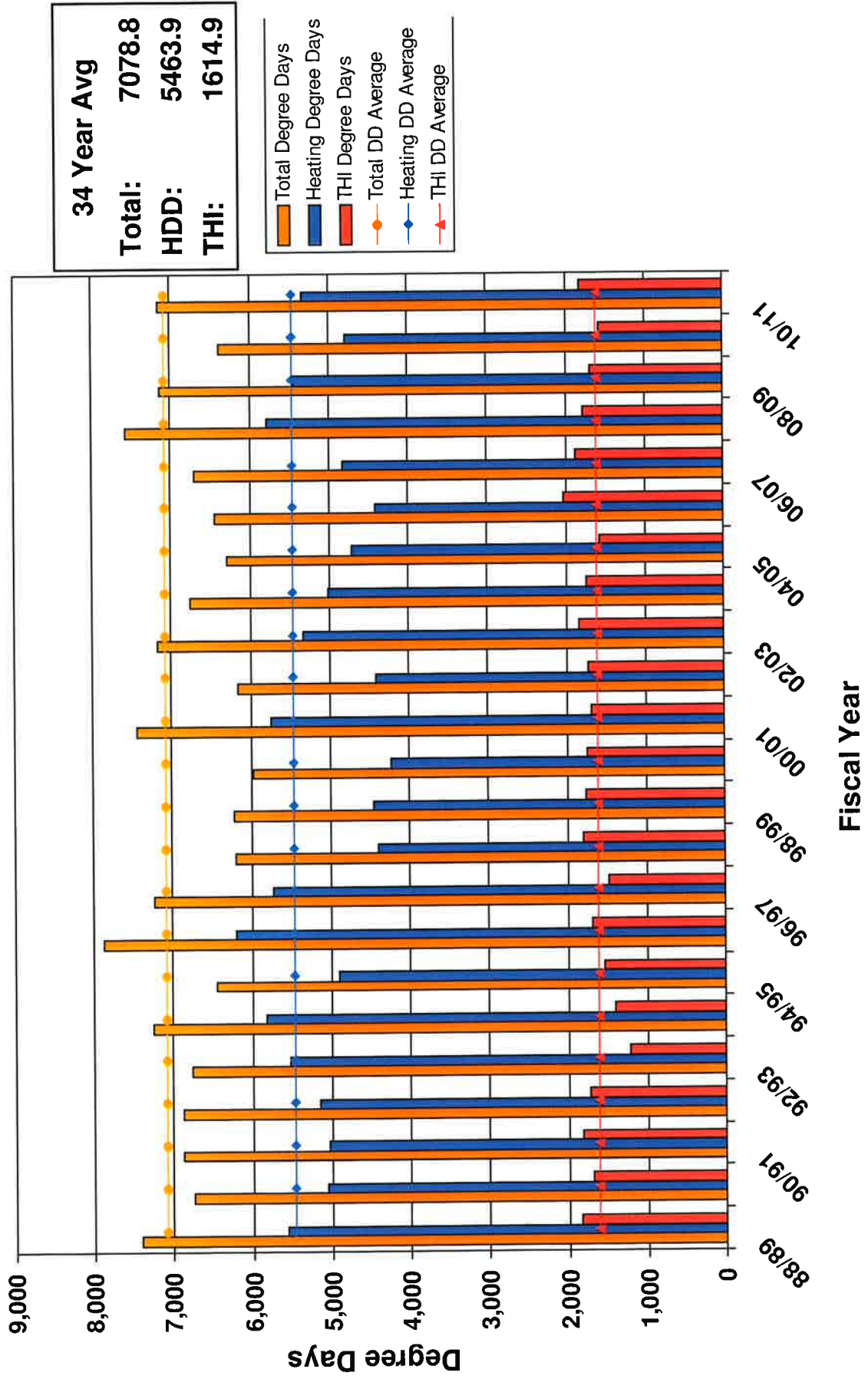
Fiscal Year	Year	Month	Fuel KBTUs	Billing Days	Fuel KBTUs - Days Normalized	HDD	THI	Fuel KBTUs - Wthr and Days Normalized	
1990/1991	1992	May	2,299,000	31	2,224,839	42	172.9	2,270,913	
	1992	Apr	8,714,800	30	8,714,800	359	21.6	8,071,399	
	1992	Mar	11,750,750	31	11,371,694	659.5	0	12,121,726	
	1992	Feb	13,590,100	29	14,058,724	790	0	16,267,252	
	1992	Jan	14,840,700	31	14,361,968	1033.5	0	16,898,522	
	1991	Dec	14,660,300	31	14,187,387	1036	0	15,145,259	
	1991	Nov	17,945,000	30	17,945,000	912.5	0	15,485,256	
	1991	Oct	7,265,400	31	7,031,032	253.5	26	6,629,810	
	1991	Sep	1,202,000	30	1,202,000	67.5	187.8	1,194,518	
	1991	Aug	0	31	0	0	424.9	38,199	
	1991	Jul	0	31	0	0	442.3	0	
	1991	Jun	0	30	0	0	445.7	213,046	
	1989/1990	1991	May	1,431,000	31	1,384,839	86.5	263	1,608,320
		1991	Apr	7,891,300	30	7,891,300	217	49.2	8,531,086
1991		Mar	14,259,200	31	13,799,226	642	3.6	14,707,397	
1991		Feb	14,557,600	28	15,597,429	826	0	17,480,642	
1991		Jan	19,717,300	31	19,081,258	1311	0	19,110,175	
1990		Dec	17,524,900	31	16,959,581	1182	0	16,598,119	
1990		Nov	11,938,700	30	11,938,700	518	8.2	13,043,868	
1990		Oct	7,873,600	31	7,619,613	225	22.8	7,475,932	
1990		Sep	1,928,400	30	1,928,400	26.5	260.3	2,063,670	
1990		Aug	0	31	0	0	419.6	27,763	
1990		Jul	1,002,400	31	970,065	0	429.1	914,342	
1990		Jun	614,300	30	614,300	5.5	375.4	688,925	
1990		May	2,454,000	31	2,374,839	66.5	97.2	2,271,860	
1990		Apr	8,292,000	30	8,292,000	309.5	77.8	8,095,907	

Fiscal Year	Year	Month	Fuel KBTUs	Billing Days	Fuel KBTUs - Days Normalized	HDD	THI	Fuel KBTUs - Wthr and Days Normalized
	1990	Mar	13,064,000	31	12,642,581	578.5	4.3	14,124,572
	1990	Feb	14,785,900	28	15,842,036	858	0	17,436,080
	1990	Jan	15,322,000	31	14,827,742	869.5	0	18,846,287
	1989	Dec	18,720,000	31	18,116,129	1372.5	0	16,033,209
	1989	Nov	13,929,000	30	13,929,000	769	0	12,765,998
	1989	Oct	7,743,200	31	7,493,419	198.5	57.5	7,589,207
	1989	Sep	3,129,200	30	3,129,200	31	193.8	3,133,532
	1989	Aug	633,000	31	612,581	0	412.8	626,954
	1989	Jul	398,900	31	386,032	0	526.2	521,499
	1989	Jun	591,100	30	591,100	2	323.1	562,746
1988/1989								
	1989	May	2,822,000	31	2,730,968	70.5	148.3	2,728,605
	1989	Apr	8,186,000	30	8,186,000	294	21.9	8,129,974
	1989	Mar	15,613,000	31	15,109,355	879.5	7.6	13,871,350
	1989	Feb	18,193,000	28	19,492,500	1240.5	0	17,630,071
	1989	Jan	16,758,000	31	16,217,419	1008.5	0	18,979,887
	1988	Dec	15,800,000	31	15,290,323	1067	0	15,968,062
	1988	Nov	12,850,000	30	12,850,000	657	0	12,699,090
	1988	Oct	7,705,000	31	7,456,452	326.5	15.7	6,395,563
	1988	Sep	1,910,000	30	1,910,000	9	206.2	1,938,747
	1988	Aug	444,000	31	429,677	0	470.5	557,662
	1988	Jul	351,000	31	339,677	0	537.2	496,804
	1988	Jun	430,000	30	430,000	0	438.7	629,263

Note: 1 KBTU is equal to 1,000 BTUs.

Note: Days are normalized to 30 days per month.

Minneapolis-St. Paul, MN Fiscal Year Degree Days, Base = 55 Degrees Fahrenheit



Macalester College

Heating Degree Days, Base = 55 degrees Fahrenheit

Calendar Year	JAN	FEB	MAR	APR	MAY	JUN	JUL	AUG	SEP	OCT	NOV	DEC	Total	Heating Season
34 Year Avg	1314.2	1034.4	742.5	287.8	57.3	2.1	0.1	0.2	33.9	209.1	640.3	1142.0	5463.9	5370.3
1988	1363.5	1186.0	646.5	223.5	9.5	0.0	0.0	0.0	9.0	326.5	657.0	1067.0	5488.5	5470.0
1989	1008.5	1240.5	879.5	294.0	70.5	2.0	0.0	0.0	31.0	198.5	769.0	1372.5	5866.0	5762.5
1990	869.5	858.0	578.5	309.5	66.5	5.5	0.0	0.0	26.5	225.0	518.0	1182.0	4639.0	4540.5
1991	1311.0	826.0	642.0	217.0	86.5	0.0	0.0	0.0	67.5	253.5	912.5	1036.0	5352.0	5198.0
1992	1033.5	790.0	659.5	359.0	42.0	9.0	0.0	0.0	13.0	274.0	731.0	1048.5	4959.5	4895.5
1993	1229.0	1053.0	796.5	328.0	44.5	6.0	0.0	0.0	77.0	271.5	733.0	1052.5	5591.0	5463.5
1994	1572.0	1161.5	630.0	289.5	37.5	0.0	0.0	0.0	16.0	135.5	516.0	946.5	5304.5	5251.0
1995	1186.5	1013.5	644.5	392.0	51.0	7.0	0.0	0.0	73.5	252.5	876.0	1159.0	5655.5	5524.0
1996	1396.0	1054.0	907.5	383.5	84.0	0.0	0.0	0.0	12.5	200.0	869.0	1239.5	6146.0	6049.5
1997	1356.0	924.5	746.5	308.0	83.5	0.0	0.0	0.0	3.0	221.0	760.5	831.5	5234.5	5148.0
1998	1088.5	623.0	712.8	148.9	2.3	5.7	0.0	0.0	5.0	132.4	519.7	920.6	4158.9	4145.9
1999	1279.8	745.5	628.6	189.8	23.9	5.2	0.0	0.0	18.8	194.7	406.0	900.6	4392.9	4345.0
2000	1200.3	771.6	438.3	274.1	24.6	2.3	0.0	0.0	35.3	138.0	722.2	1455.7	5062.4	5000.2
2001	1070.1	1189.7	839.2	257.1	34.3	1.9	0.0	0.0	24.2	226.4	285.7	840.3	4768.9	4708.5
2002	932.1	730.0	920.3	345.8	117.2	4.5	0.0	0.0	28.5	416.6	668.8	889.4	5053.2	4903.0
2003	1221.6	1085.8	735.1	251.5	27.6	0.0	0.0	0.0	52.8	207.2	674.2	925.9	5181.7	5101.3
2004	1348.8	950.7	589.6	206.5	60.5	0.0	0.0	0.1	1.3	194.6	509.4	1010.8	4872.3	4810.4
2005	1227.6	801.0	713.5	156.4	98.6	0.0	0.0	0.0	5.3	173.8	543.2	1088.7	4808.1	4704.2
2006	807.8	987.8	647.4	117.8	43.4	0.0	0.0	0.0	41.5	339.6	555.9	796.8	4338.0	4253.1
2007	1083.9	1159.6	534.5	310.0	6.1	0.0	0.0	0.0	10.9	127.0	818.4	1179.0	5229.4	5212.4
2008	1294.1	1142.3	818.4	344.6	43.0	0.0	0.0	0.0	4.3	185.4	632.9	1275.8	5740.8	5693.5
2009	1433.6	951.3	690.1	245.5	25.9	10.9	0.0	0.0	14.9	362.5	373.8	1160.9	5269.4	5217.7
2010	1293.9	980.5	456.5	64.5	77.6	0.0	0.0	0.0	11.1	132.4	590.9	1174.8	4782.2	4693.5
2011	1322.1	1005.0	777.3	270.6	59.9	0.0	0.0	0.0	27.9					

Macalester College

Cooling Degree Days, Base = 55 degrees Fahrenheit

Calendar Year	JAN	FEB	MAR	APR	MAY	JUN	JUL	AUG	SEP	OCT	NOV	DEC	Total	Cooling Season
34 Year Avg	0.0	0.0	2.6	39.0	189.4	400.0	559.6	478.7	219.4	58.1	1.3	0.0	1948.1	1847.1
1988	0.0	0.0	0.0	26.5	358.0	592.0	712.0	619.0	267.5	29.0	0.0	0.0	2604.0	2548.5
1989	0.0	0.0	6.5	24.0	194.0	386.0	635.0	504.0	238.0	107.0	0.0	0.0	2094.5	1957.0
1990	0.0	0.0	1.0	103.0	113.0	438.0	499.5	494.5	316.0	34.5	11.0	0.0	2010.5	1861.0
1991	0.0	0.0	0.0	81.5	311.0	543.5	541.0	509.5	220.5	46.5	0.0	0.0	2253.5	2125.5
1992	0.0	0.0	0.0	22.0	262.0	322.5	336.5	347.5	192.0	75.0	0.0	0.0	1557.5	1460.5
1993	0.0	0.0	0.0	10.0	126.5	278.5	460.5	483.0	92.0	27.5	0.0	0.0	1478.0	1440.5
1994	0.0	0.0	0.0	40.5	252.0	437.0	463.0	400.0	280.0	48.5	0.0	0.0	1921.0	1832.0
1995	0.0	0.0	0.0	0.0	99.5	482.5	538.5	585.5	226.5	45.5	0.0	0.0	1978.0	1932.5
1996	0.0	0.0	0.0	10.5	129.0	425.5	480.5	529.0	253.0	70.0	0.0	0.0	1897.5	1817.0
1997	0.0	0.0	0.0	6.0	90.5	471.0	518.0	444.5	285.5	141.0	0.0	0.0	1956.5	1809.5
1998	0.0	0.0	2.1	35.5	308.3	326.7	569.0	519.4	365.5	29.1	2.1	0.0	2157.7	2088.9
1999	0.0	0.0	4.7	20.5	205.8	380.9	674.6	481.5	207.4	25.5	11.5	0.0	2012.4	1950.2
2000	0.0	0.0	11.8	34.4	219.5	349.3	545.3	530.3	236.3	85.5	7.7	0.0	2020.1	1880.7
2001	0.0	0.0	0.0	62.5	185.0	426.6	653.5	592.2	195.8	20.8	14.8	0.0	2151.2	2053.1
2002	0.0	0.0	0.0	61.8	116.3	492.5	681.9	494.5	330.9	17.3	0.0	0.0	2195.2	2116.1
2003	0.0	0.0	0.0	52.0	132.7	398.8	585.2	620.8	271.7	81.2	0.0	0.0	2142.4	2009.2
2004	0.0	0.0	0.0	48.7	118.9	328.7	533.3	355.6	368.1	38.1	0.0	0.0	1791.4	1704.6
2005	0.0	0.0	3.3	73.5	135.5	551.9	683.0	518.3	347.5	89.0	0.0	0.0	2402.0	2236.2
2006	0.0	0.0	0.0	84.6	263.5	491.6	768.8	536.9	171.4	54.3	6.1	0.0	2377.2	2232.2
2007	0.0	0.0	18.3	75.8	288.3	538.0	656.9	527.6	308.3	103.4	0.0	0.0	2516.6	2319.1
2008	0.0	0.0	0.0	18.1	94.8	411.1	635.8	536.3	247.3	34.5	23.4	0.0	2001.3	1925.3
2009	0.0	0.0	0.0	32.8	218.3	396.0	464.3	454.6	359.1	0.0	0.0	0.0	1925.1	1892.3
2010	0.0	0.0	13.0	69.0	271.3	427.9	660.8	671.6	163.3	78.8	1.1	0.0	2356.8	2194.9
2011	0.0	0.0	0.0	5.9	166.5	438.6	752.3	581.5	254.4					

Macalester College

Temperature Humidity Index Degree Days, Base = 55 degrees Fahrenheit

Calendar Year	JAN	FEB	MAR	APR	MAY	JUN	JUL	AUG	SEP	OCT	NOV	DEC	Total	Cooling Season
34 Year Avg	0.0	0.0	1.8	25.7	149.5	337.5	457.4	405.5	191.6	43.9	2.0	0.0	1614.9	1541.5
1988	0.0	0.0	0.0	17.5	246.1	438.7	537.2	470.5	206.2	15.7	0.0	0.0	1931.9	1898.7
1989	0.0	0.0	7.6	21.9	148.3	323.1	526.2	412.8	193.8	57.5	0.0	0.0	1691.2	1604.2
1990	0.0	0.0	4.3	77.8	97.2	375.4	429.1	419.6	260.3	22.8	8.2	0.0	1694.7	1581.6
1991	0.0	0.0	3.6	49.2	263.0	445.7	442.3	424.9	187.8	26.0	0.0	0.0	1842.5	1763.7
1992	0.0	0.0	0.0	21.6	172.9	270.0	311.9	302.7	172.8	49.2	0.0	0.0	1301.1	1230.3
1993	0.0	0.0	0.0	8.2	115.4	269.6	416.7	423.7	90.4	24.7	0.0	0.0	1348.7	1315.8
1994	0.0	0.0	0.0	21.2	171.3	379.9	402.8	346.0	264.4	56.7	1.5	0.0	1643.8	1564.4
1995	0.0	0.0	2.4	0.0	82.1	394.1	454.5	503.0	195.4	37.8	0.0	0.0	1669.3	1629.1
1996	0.0	0.0	0.0	2.8	98.1	344.7	390.0	429.1	207.8	48.0	0.0	0.0	1520.5	1469.7
1997	0.0	0.0	0.0	8.6	58.7	377.0	432.0	372.9	242.1	100.7	0.0	0.0	1592.0	1482.7
1998	0.0	0.0	6.8	26.0	247.9	292.8	466.3	446.3	302.5	49.0	4.8	0.0	1842.4	1755.8
1999	0.0	0.0	4.0	13.9	184.3	325.9	545.9	413.6	186.7	26.5	10.1	0.0	1710.9	1656.4
2000	0.0	0.0	16.0	24.1	190.1	297.5	457.4	451.2	191.5	85.0	8.9	0.0	1721.7	1587.7
2001	0.0	0.0	0.0	44.3	157.1	356.1	510.2	478.0	193.5	30.6	22.8	0.0	1792.6	1694.9
2002	0.0	0.0	0.0	50.0	93.2	409.3	558.2	426.9	285.0	17.6	0.0	0.0	1840.2	1772.6
2003	0.0	0.0	0.9	32.3	110.4	326.2	473.8	489.4	218.2	66.3	0.0	0.0	1717.5	1618.0
2004	0.0	0.0	5.4	37.3	124.0	280.4	446.9	312.5	312.4	40.5	0.0	0.0	1559.4	1476.2
2005	0.0	0.0	2.8	61.1	127.1	440.6	527.8	421.7	296.6	84.4	0.6	0.0	1962.7	1813.8
2006	0.0	0.0	0.0	48.7	208.2	371.8	575.5	440.4	163.1	42.2	4.4	0.0	1854.3	1759.0
2007	0.0	0.0	17.8	49.5	220.7	405.6	502.0	431.5	261.3	101.1	0.0	0.0	1989.5	1821.1
2008	0.0	0.0	0.0	17.5	73.0	324.4	490.4	426.4	231.1	41.4	23.3	0.0	1627.5	1545.3
2009	0.0	0.0	0.0	19.8	138.8	302.0	359.4	372.3	299.7	0.5	0.4	0.0	1492.9	1472.2
2010	0.0	0.0	7.4	50.2	192.3	360.4	528.0	537.0	163.4	71.1	3.7	0.0	1913.5	1781.1
2011	0.0	0.0	0.0	5.6	145.7	357.1	593.2	467.7	210.0					

Macalester College Building Square Footage Data
December, 2011

	<u>Building</u>	<u>Year Built</u>	<u>Year Renovated</u>	<u>Gross Sq. Ft.</u>	<u>On Main Steam Distrib'n System</u>	<u>On Main Elec. Distrib'n Grid</u>	<u>Excluded from Energy Consump. Analysis, '11</u>
ACADEMIC BUILDINGS							
1	Carnegie Hall	1909	1990	33,905	x	x	
2	Fine Arts Center - Art & Chiller Plant	1962		47,535	x	x	
3	Fine Arts Center - Core	1962	demo: 1/11	19,140	x	x	x
4	Fine Arts Center - Humanities	1962	1992	53,374	x	x	
5	Fine Arts Center - Music	1962	demo: 1/11	44,272	x	x	x
6	Fine Arts Center - Theater	1962		39,677	x	x	
7	Old Main	1885	1993	28,007	x	x	
8	Olin/Rice Halls	1963/1969	1997	178,408	x	x	
9	Ordway Biology Station	1967		12,800	remote site	remote site	
	Academic Buildings Square Footage			457,118			
ADMINISTRATIVE & SUPPORT BUILDINGS							
10	77 Macalester		1995	11,944			
11	Alumni House (1644 Summit)	1926		7,109		x (subfed thru GDD)	
12	Campus Center	2001		76,065	x	x	
13	Institute for Global Citizenship (IGC) (online 1/09)	2008		17,000	x	x	
14	International Center (1576 Summit)	1914	2002	7,320			
15	Kagin Commons	1962	2001	40,900	x	x	
16	Lampert Building (32,36,40 Snelling Ave. S.)			28,999			
17	Leonard Center - (new athletic and recreation center, online 3/08; replaced Athletic Bldg., 103,835 sq. ft., demo: 1/07)	2008		175,000	x	x	(sq. ft. changed in replaced bldg.)
18	President's House (1635 Summit)	1910	2003/2006	3,976			
19	Wallace Library	1988		86,910	x	x	
20	Weyerhaeuser Chapel	1967		17,682	x	x	
21	Weyerhaeuser Hall	1941	1989	31,144	x	x	
22	Winton Health Center	1952	demo: 6/08	3,431		x	x
23	45 Snelling Ave North (Temp. Music Building)	2011		5,772			
	Administrative Bldgs Square Footage			513,252			
RESIDENCE HALLS							
24	30 Macalester		1997	9,062	x	x	
25	37 Macalester (Cultural House)		1984/2000	6,924		x	
26	Bigelow Hall	1946	1992	37,890	x	x	
27	George Draper Dayton Hall (GDD)	1997		42,423	x	x	
28	Doty Hall	1962	2001	43,474	x	x	
29	Dupre Hall	1962	1994/2002	65,459	x	x	

Macalester College Building Square Footage Data
December, 2011

	<u>Building</u>	<u>Year Built</u>	<u>Year Renovated</u>	<u>Gross Sq. Ft.</u>	<u>On Main Steam Distrib'n System</u>	<u>On Main Elec. Distrib'n Grid</u>	<u>Excluded from Energy Consump. Analysis, '11</u>
30	Grand Cambridge Apartments (1679 Grand Ave.)	2000		17,049			
31	Kirk Hall	1926	1993	53,515	x	x	
32	Stadium (Veggie Co-op)	1964	2001	18,305		x	
33	Turck Hall	1956	2004	40,377	x	x	
34	Wallace Hall	1906	2003	49,328	x	x	
	Residence Hall Square Footage			383,806			
	SUB-TOTAL SQUARE FOOTAGE			1,354,176			
	HOUSES						
35	53 Macalester - student overflow	1920's		1,200			
36	57 Macalester - student overflow	1920's		1,200			
37	63 Macalester - student overflow	1928		1,216			
38	223 Macalester - student overflow	1919	razed	1,266			
39	229 Macalester - student overflow	1920	razed	1,092			
40	233 Macalester - Chinese	1915	razed	1,640			
41	1661/1663 Princeton	2011		2,080			
42	1662 Princeton - student overflow	1910		1,242			
43	1665/1667 Princeton - Fac/Staff Rental	1927		2,080			x
44	1668 Princeton - Russian	1922		1,144			
45	1667 St. Clair - Fac/Staff Rental	1914		1,100			x
46	176 Vernon - Japanese	1921		1,477			
47	180/182 Vernon - Spanish	1913		2,656			
48	188/190 Vernon - German	1894		3,837			
49	196 Vernon - French	2001		2,882			
50	200 Vernon - Eco House	1957		1,176			
51	204 Vernon - Fac/Staff Rental	1911		1,365			x
52	210 Vernon - Fac/Staff Rental	1919		2,160			x
53	216 Vernon - Fac/Staff Rental	1915		1,928			x
54	222 Vernon - Fac/Staff Rental	1914		1,420			x
55	224 Vernon - Fac/Staff Rental	1911		836			x
56	230 Vernon - Fac/Staff Rental	1913		1,625			x
	Houses Square Footage			36,622			
	TOTAL SQUARE FOOTAGE			1,390,798			
	High Winds Property:						
57	1648 Grand Ave - Patagonia	1926	2004	7,200			x