



November 2015

## IN THIS ISSUE

Department Events | Department Information | Alumni News

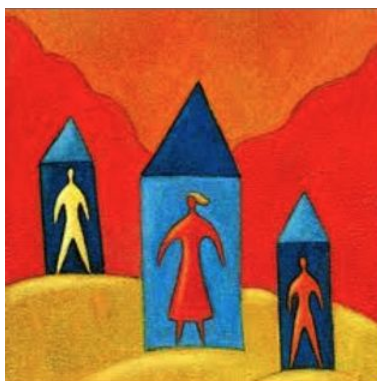
---



### Chair Talk from Joan

Welcome to the November issue of Psych-Babble. There's lots to check out in this issue, including some pretty great photos from the Halloween lab tour/trick or treat extravaganza, thoughtful reports from majors studying abroad, opportunities within and beyond the department to learn more about psychology, and more. November is also when registration for spring classes begins, so please be sure to schedule a time to meet with your advisor and talk through your plans for next semester in advance of your registration time. As usual, we

are offering a wide variety of classes next semester; please feel free to ask any one of us for more information about classes, prerequisites, etc. If you're applying to study abroad next year, be sure to get the relevant form to your advisor in advance of the early December study away application deadline. If you are planning to declare a psychology major, you can complete the Psych Major Declaration form with your advisor (if that person is in the psychology department) or any psychology department faculty member. As always, if you have any questions about anything related to the major, please don't hesitate to be in touch with me ([ostrove@macalester.edu](mailto:ostrove@macalester.edu)). **If you want a chance to learn more about the major from all of the department faculty and from current majors (plus get a free lunch!), check out the announcement below about the department information session on Thursday, November 5th.** Have a great month!



### Careers in Mental Health and Clinical Health Psychology Lunch - Tuesday, Nov. 3rd 11:30 - 12:30 in Olri 352

Jaine Strauss will host a conversation about mental health careers, including social work, counseling psychology clinical psychology, psychiatry, health psychology and school psychology. She will answer questions about the ins and outs of graduate training in each discipline.

Please RSVP to Lee so we can order enough food.



## Psychology Informational Lunch - Thursday, November 5 11:30 - 12:30 in Olri 352

Are you new to the psych major? Thinking about majoring in psych? Come hear about the department at this lunch. You will hear from professors and upper class psych majors about the Macalester Psych Department and the major requirements.

Please RSVP to Lee so we can order enough food.

## Psycho-babble

**Lydia Craig '16** is featured (with photo) in an APA article <http://www.apa.org/science/about/psa/2015/09/summer-fellowship.aspx>

**Yolanda Burckhardt '15** got a new job at the Metropolitan Council as a program assistant for the Office of Equal Opportunity.

## Mesmerizing Major - David Leipold '16

Favorite Movie: Fight Club

Favorite Book: A Walk In the Woods, by Bill Bryson

Favorite place to eat in the Twin Cities: The Nook

What do I do when not studying: Reading, listening to music, spending time with friends/dogs from home whenever possible

Where did I grow up: Savage, Minnesota

Interesting fact about my hometown: Every year there is a big celebration in the summer celebrating a horse that has been dead for about half a century, Dan Patch

Something about my family: My mother was also a psychology major, my brother is looking at Macalester, and my sister also attends school in the cities. (Also I have 3 dogs that I love)

Something I am pleased with or proud of in myself: I have a strange knack for learning/memorizing song lyrics.



## Friday Socials

Friday Socials are every Friday that classes are in session at 3:20 in the hallway by the blue house. It's a time to socialize with other students, faculty and staff. We have a treat each week and all are invited.



## Alum Updates - Agnes Biswalo

I am currently doing a year of service with the St. Joseph Worker program and my placement site is Carondelet Village (CV). A huge part of my job is around dementia education in St. Paul as a St Paul Neighborhoods ACT on Alzheimer's (SPN ACT) Team co-coordinator. I think I got placed here mainly because of my volunteer experience with Rakhma Homes as I was enrolled in Jaine's community psychology and public health class. I am really enjoying learning about aging, and the challenges that come with it (mainly Alzheimer's and other dementias) and then thinking of the various ways in which public health could be used to address those challenges for those living with dementia and their caretakers.

## Postcard from Study Away - Sierra Pancoast

Hello from Costa Rica!

I'm getting to write this in English - how exciting! I have been studying this semester in San Jose, Costa Rica through the ACM program that has a focus on community engagement. I am taking all my courses in Spanish and living in a homestay. I am specifically studying public health, as well as taking an intensive language course and a Costa Rican history course. This past month I have been doing an internship at Fundación Anna Ross which is similar to the cancer foundation Susan G. Komen (Race for the Cure) in the U.S. I have been able to apply skills I have learned in my psychology courses when working in the support groups for patients and survivors of cancer. It has been rewarding to see how powerful and motivational these support groups can be whether we are using music therapy, art therapy, or simply sitting around sharing our experiences.



to

Despite what you may think, it has not all been beautiful beaches and zip-line tours. Although Costa Rica is known to be the happiest country in the world, there is a lot of room for improvement. I have taken a more analytical viewpoint when learning about the public healthcare system and the resources available. I think it is important for students to realize that when we study abroad, we truly do not know a country until we begin to try and understand their problems and shortcomings. Yes the art, architecture, food, and people are all important pieces of learning about a culture, but their struggles too can say a lot. Feel free to contact me with any questions you may have about the program.

Pura Vida, Sierra Pancoast '17

## Postcard from Study Away - Gabrielle Rivera

Last December I knew I would be studying abroad in Madrid, Spain the coming fall, but I did not know what my journey would look like or how I would feel entering a new culture. While I tried my best to prepare for my experience abroad, what ended up being my most useful tool is my effort to maintain an open attitude. What this means to me is that I strive to have very few expectations. In limiting my expectations, I find I am better able to immerse myself and appreciate Spanish culture. I'm currently living in an apartment with a Spanish family of three: a señora, her daughter, and eighteen-year-old granddaughter. Living with them presents some of my biggest challenges and most rewarding experiences. It is not easy to enter someone else's home and adjust to the customs, but it is worth it to better understand the rhythm of Spanish life and cultural norms. An integral part of Spanish life is social engagement. Spaniards value time with family and friends above almost all else. The rhythm of Spanish life reflects this value. Most stores close between the hours of 2:00-5:00 to enjoy comida (lunch) and to take a short nap. In many ways, Spanish customs are very different from those in the U.S. However, looking beyond those differences there are common similarities that are comforting reminders of home. Study abroad has opened a new chapter in my story and I am eager to see where the rest of my journey will take me.





## Psych Halloween Lab Tours





photos!

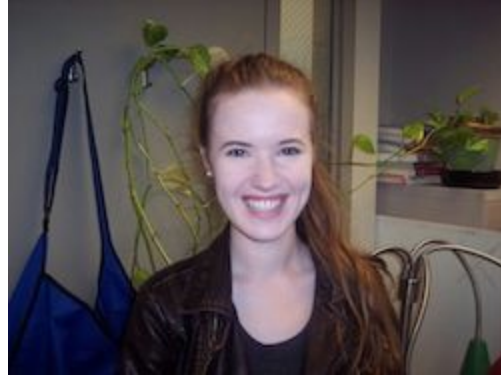
Thanks to Rachel Fogel for great



## Welcome New Majors



Erin Murray '16 Kendall, WI



Tess Huber '17 Millville, MN



Gabriella Rivera '17 Evanston, IL



Alisa Khananashvili '18 Glenview, IL



Linda De Anda '18 St. Paul, MN

## Neuroscience Science Majors



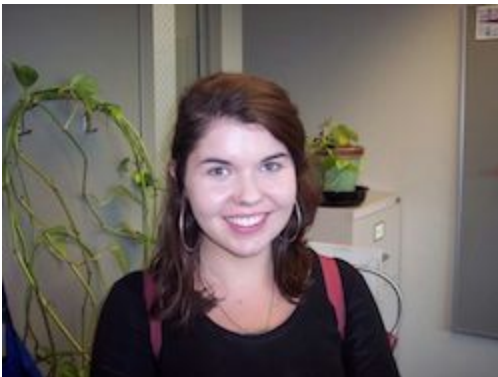
Margaret Stelzner '18 Minneapolis, MN



Akansksha Dua '16 Calcutta, India



Eloise Terry '17 Needham, MA



Madeleine Parmenter '16 Boston, MA

## Opportunities

**Mayo Graduate School** offers PhD and MD/PhD training to future leaders in biomedical research and education. Training is especially distinctive for the world-class research laboratories at Mayo Clinic campuses in Minnesota, Florida, and Arizona, and Mayo Clinic's unique funding model where all PhD students are awarded 5-year internal fellowships to select the mentor of their choice with no teaching responsibilities. Mayo Graduate School particularly welcomes applications from international and underrepresented students. The **Mayo Graduate School** [application](#) deadline is **Dec. 1, 2015**.

Mayo Graduate School **Summer Undergraduate Research Fellowship (SURF) Program** offers a world-class opportunity for undergraduates to conduct a summer research project for 10 weeks while developing technical skills, networking, and enjoying special weekly seminars about current research. The **SURF** [application](#) deadline is **Feb. 1, 2016**.

Mayo Graduate School created and sustains the oldest competitive NIH-funded **Post-Baccalaureate Research Education Program (PREP)** in the U.S. This program enriches PhD- and MD/PhD-bound post-baccalaureate students from backgrounds underrepresented in biomedical research, with the goal of a future biomedical research workforce whose diversity matches that of our country. Participants benefit from mentored research, graduate courses, and focused training in communication skills. The **PREP** [application](#) deadline is **May 1, 2016**.

Look for more information about these remarkable training programs on the Mayo Graduate School [website](#).

\* \* \* \* \*

The Counseling and Student Personnel Psychology (CSPP) program at the University of Minnesota would like to invite you to attend an information session, held on Thursday, November 5th from 2:30-3:30pm in Mondale Hall, Room 15. Faculty, staff and students will be on hand to answer questions about the program, and talk about the application process. If you are interested in attending, please RSVP at <http://z.umn.edu/rsvpinfosession2015>.

To learn more about the Counseling and Student Personnel Psychology program, please visit our website at: <http://www.cehd.umn.edu/EdPsych/Programs/CSPP/default.html>

\* \* \* \* \*

The Marcus Autism Center, in conjunction with the Emory University School of Medicine and Children's Healthcare of Atlanta, is offering four fellowships: the Cohen Fellowship in Developmental Social Neuroscience, the Marcus Fellowship in Speech Science and Engineering, the Simons Fellowship in Computational Neuroscience, and the Simons Fellowship in Design Engineering. Students who will receive a bachelor's degree by June 2016 will be eligible for the positions. The fellowships will commence in July 2016, and they are 2 years in duration. Students can find further details at: [cohenfellowship.org](http://cohenfellowship.org) and [simonsfellowship.org](http://simonsfellowship.org).

The **Cohen Fellowship in Developmental Social Neuroscience** will involve cutting-edge social neuroscience research in infants, toddlers and adolescents. Fellows will work to further the understanding of autism through eye-tracking research, guiding a project from the point of data collection to publication of results.

The **Marcus Fellowship in Speech Science and Engineering** will involve researching early vocal development, including speech production and speech perception, as part of a program to map out both typical and atypical

development of spoken communication in early childhood.

The **Simons Fellowship in Computational Neuroscience** will involve integrating computational strategies with clinical research goals. Fellows will develop methods for the analysis of visual scanning and eye-tracking data, computational models of visual salience, and data visualization techniques, all with the aim of advancing the understanding of autism and efforts at early diagnosis.

The **Simons Fellowship in Design Engineering** will involve developing innovative design solutions to answer experimental research questions. Fellows will explore human factors engineering, product prototyping and the design of environments with the goal of advancing neuroscience research.

\* \* \* \* \*

*Recruiting volunteers for a Mental Health placement in Sri Lanka.*

*SLV is a volunteer organisation in Sri Lanka, founded by a group of University graduates in 2010. SLV recruit volunteers to work at different teaching and social work projects around the south of Sri Lanka. The mental health placement includes volunteering at a psychiatric hospital whilst being trained by a Clinical Psychiatrists and Mental Health Professionals. Additional Projects include: volunteering at centres for people with special needs, youth English teaching and running activities at children's development centres.*

*All volunteers are required to undergo a series of in-country training sessions run by local NGO's and charity workers, such as basic Teaching English, working with children and vulnerable adults.*

*I'm always available by email at [lee@slvolunteers.com](mailto:lee@slvolunteers.com) and I'd be happy to have a chat with you about our placements. Please see the links below for more information.*

- [www.slvolunteers.com](http://www.slvolunteers.com)
- [www.facebook.com/slvolunteersorganisation](http://www.facebook.com/slvolunteersorganisation)
- <http://www.slvolunteers.com/projects/psychology-work-experience-placement/>

## Jobs

Our family is looking for help in caring for our 11 year old son who has autism. We need an extra set of hands and eyes so my husband and I can get some breaks and so we can also focus a bit more on our 9 year old son. We live in St. Paul, just east of Como Lake. A reliable car is required.

The hours needed ASAP are from 4:30-7pm every Tuesday and Thursday and perhaps some weekend shifts. Please free to call or email me with questions. Angi Faiks [faiks@macalester.edu](mailto:faiks@macalester.edu) 612-382-1680

\* \* \* \* \*

### Job Opportunity: Personal Care Assistant/Tutor

We have a loving 13 year old boy with Autism and are looking for someone to provide tutoring and guidance for him. This is a year-round, part-time position. Typical tasks might including behavioral redirection and helping him focus on his exercise, reading, or math. You may also assist him in learning/remember procedural tasks (ie. brushing teeth) that he was taught at school. We are very flexible with a work schedule but are looking for someone 10-20 hours a week, Tuesday and Thursday evenings and Sundays would be great, but we are open to any other day as well. Care is provided at our home in Woodbury (20 minutes from campus).

If interested, please contact Suresh at [suresh.techies@gmail.com](mailto:suresh.techies@gmail.com) or 703-598-0790.

\* \* \* \* \*



## Volunteer Positions During Breaks



### VET SCIENCE

## APPLICATIONS DEADLINE

#### Winter Session

(December 19, 2015 - January 9, 2016)

Application deadline:  
November 13, 2015

#### Summer Session

(May 19 - June 23, 2016)  
(June 30 - August 4, 2016)

Application deadline:  
April 10, 2016

#### Fall Session

(August 18 - September 15, 2016)

Application deadline:  
June 23, 2016

### CLINICAL LIFE



#### LOCATIONS:

TRUJILLO  
HUANCHACO  
AREQUIPA

### TEACHING ENGLISH



### SOCIAL WORK



Sessions	Cost
May 19, 2015-June 23, 2016 (5 weeks)	\$1700
June 30, 2015-August 4, 2016 (5 weeks)	\$1700
May 19, 2015-August 4, 2016 (10 weeks)	\$2300
August 18, 2015-September 15, 2016 (4 weeks)	\$1600
December 19, 2015-January 9, 2016 (3 weeks)	\$1400

\*\*Dates are flexible according to your university/personal schedule\*\*

**APPLY NOW** at: [www.amaperunpo.org](http://www.amaperunpo.org)

### AMAPerú Nonprofit Organization

[www.amaperunpo.org](http://www.amaperunpo.org)

<https://www.facebook.com/amaperunonprofit?fref=ts>

[https://twitter.com/AMA\\_Peru](https://twitter.com/AMA_Peru)

[http://instagram.com/amaperu\\_nonprofit#](http://instagram.com/amaperu_nonprofit#)

## Internships

### Adult Lay Health Advisor (LHA) Programs Evaluation Intern - Fall 2015/January-Spring 2016

Planned Parenthood Of Minnesota / North Dakota / South Dakota (PPMNS) - Saint Paul, Minnesota

POSITION TYPE: Part Time, Paid, Internship POSTING DATE: October 06, 2015 END DATE: October 30, 2015

### Story Collection Intern - January/Spring 2016 (24698092)

Prepare + Prosper - St Paul, Minnesota

POSITION TYPE: Part Time, Unpaid, Internship POSTING DATE: September 30, 2015 END DATE: November 05, 2015

### Recruitment and Marketing Intern - Spring 2016 (24698380)

Tubman - St. Paul, Minnesota

POSITION TYPE: Part Time, Unpaid, Internship POSTING DATE: October 27, 2015 END DATE: November 25, 2015

[Outreach +Communications Intern - Fall 2015 - January/Spring 2016](#) (24698089)

Prepare + Prosper - St Paul, Minnesota

POSITION TYPE: Part Time, Unpaid, Internship POSTING DATE: September 30, 2015 END DATE: October 28, 2015

[Volunteer Management Internship- Spring 2016](#) (24698044)

Ordway Center for the Performing Arts - St. Paul, Minnesota

POSITION TYPE: Part Time, Unpaid, Internship POSTING DATE: September 28, 2015 END DATE: January 08, 2016

[Family Focused Classroom Intern - Fall 2015](#) (24697990)

Washburn Center for Children - Minneapolis, Minnesota

POSITION TYPE: Part Time, Unpaid, Internship POSTING DATE: September 23, 2015 END DATE: November 23, 2015

[Resource and Crisis Line Advocate - Fall 2015/January 2016](#) (24697929)

Tubman - Maplewood, Minnesota

POSITION TYPE: Part Time, Unpaid, Internship POSTING DATE: September 17, 2015 END DATE: January 17, 2016

[www.macalester.edu](http://www.macalester.edu)

651-696-6223

Editor: Lee Olson, [lolson4@macalester.edu](mailto:lolson4@macalester.edu)

Psychology Department | [www.macalester.edu](http://www.macalester.edu) | 651-696-6223

Copyright © 2015 Macalester College, All rights reserved.