

# Psycho-Babble

MACALESTER



December 2015

## IN THIS ISSUE

[Department Events](#) | [Department Information](#) | [Alumni News](#)

---



### Chair Talk from Joan

Now that we've finally had our first snowfall, we are officially ready for December and a jam-packed end of the semester. There are lots of exciting events coming up in the next two weeks: please take a close look at the announcements below about Game Night, the Senior Social, and the Fall Poster session. You're all invited to the first and the last of these, and all senior majors are invited to the Senior Social. Game night is in its third year now, and it's \*really\* fun so please come join us for laughs and pizza. All majors and prospective majors are strongly encouraged to attend the Poster session on December 11th: if you've already done directed research, you know what a difference it makes to have other students support you and learn about your work. If you haven't taken Directed Research yet, this is a terrific opportunity to get a sense of what's in store for you. And all of us will certainly enjoy learning about the engaging and interesting research conducted by this semester's Directed Research students. I look forward to seeing many of you at at least one of these upcoming events, and I wish all of you a successful end of the semester, a wonderful break, and best wishes for whatever holidays you might be celebrating over the next month. See you soon, and again in 2016!

### Psych Club Game Night

Join faculty and classmates for some table games, good food and lots of laughs. We'll start at 5:30 on Tuesday, Dec. 1st in room 300. We'll order pizza and have a salad. Bring a favorite game if you have one.



### Senior Social

The Senior Social will be Thursday, December 3rd, from 7:00 - 8:00 p.m. at Jack and Marty Rossmann's house. Their house is at 99 Cambridge, which is right across the parking lot from the Fine Arts building (also where we have the picnic in the fall). Seniors are invited for drinks and treats as we celebrate and enjoy each other's company before the rush to graduation. Please RSVP to Lee.



## Olin Rice Cookie Party

This is a party where you really get to show off your artistic creative side. All the trimmings will be there for you to decorate a department gingerbread house and/or your own cookie. Party starts at 1:00 on Wednesday, December 9th, and will go until all the cookies, frosting and decorations run out. Come early!



## Poster Presentations

Directed Research students will be presenting their projects on Friday, Dec. 11th from 4:45 - 6:00 p.m. in Smail Gallery. The department strongly encourages students who have yet to take directed research to attend this event. It is an excellent opportunity to find out about directed research by seeing the different areas students have investigated. We will have tasty treats too!



## Psi Chi Induction

New members were inducted into Psi Chi on Nov. 9th. Psi Chi is the national psychology honor society and majors who have a GPA of 3.65 or higher are invited to join. Congratulations to our new Psi Chi members: (from left to right) Thet Htut, Jessica Pham, Emily Brinkman, Elena Torry-Schrag, Cecelia Visscher, Heather Bourne, Wendy Chu, Kayla Thole, Lucius Kelton Wilmerding and Gina Marie Storch. Psi Chi members Kevin Dowling and Justin Rasmussen officiated.

## Psycho-babble

**Suzanne Oh '13** is a Graduate Research & Teaching Assistant at the University of Minnesota.



## Mesmerizing Major - Maddie Kornfeld

**Favorite movie?** Up

**Favorite book?** "The History of Love" by Nicole Krauss

**Favorite place to eat in the Twin Cities?** On's Thai Kitchen

**What do you do when you are not studying?** biking, playing soccer, spending time with friends, attempting to cook, reading, drawing/doodling

**Where did you grow up?** Denver

**Interesting fact about your hometown?** Colfax Avenue, the street that my high school was on, is the longest continuous street in the U.S.

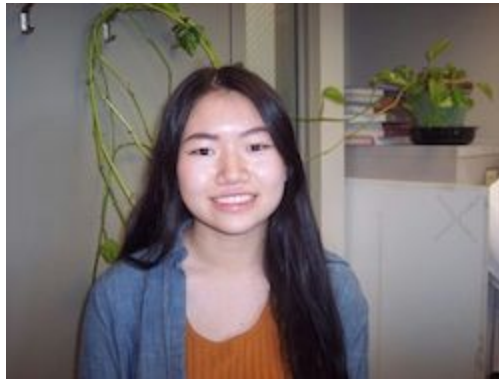
**Tell us something about your family?** Over the years, my family has collectively created more than 17 nicknames for my dog, and she responds to all of them!

**Tell us something that you are pleased with or proud of about yourself?** I've been learning to play the ukelele for a few years now.

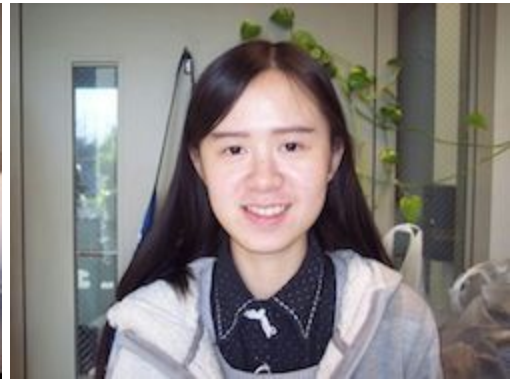
## Welcome New Majors



Anandi Gupta '18 Bangalore, India



Clara King '18 Redmond, WA



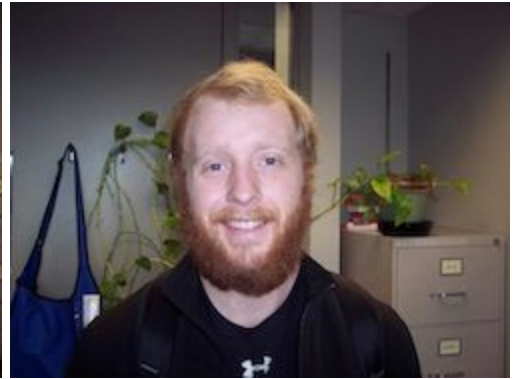
Leqi (Lynn) Zhao '18 Chengdu, China



Lisa Semro '18 Cary, IL



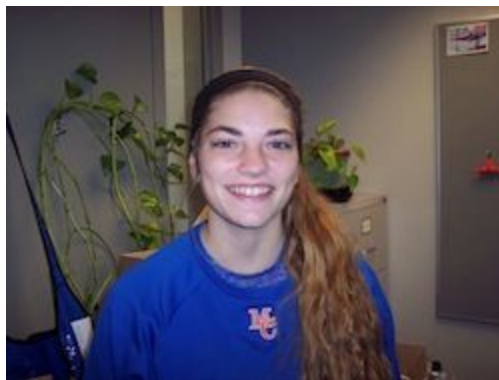
Jaime Hasama '18 Los Angeles, CA



Jacob Jones '18 Holly Pond, AL



Ezoza Yakval '18 Novosibirsk, Russia  
& Houston, TX



Morghen Bean '18 Muscatine, IA



## Neuroscience Science Majors



Shaylene McCue '18 Antioch, IL



Peter Hall '18 Rockford, IL



Tessa Djiko '18 Kansas City, KS



Sarah Fee '18 Denver, CO



Collin Brantner '18 Farmington, CT

## Internships

### [Urban Scholars Summer Program - Summer 2016 \(24698578\)](#)

Metropolitan Council - St. Paul, Minnesota

POSITION TYPE: Full Time, Paid, Internship

POSTING DATE: November 10, 2015

END DATE: November 30, 2015

### [Refugee and Immigrant Rights Intern-Winter/Spring 2016 \(24693695\)](#)

The Advocates for Human Rights - Minneapolis, Minnesota

POSITION TYPE: Unpaid, Internship

POSTING DATE: November 08, 2015

END DATE: December 18, 2015

### [Women's Program Internship-Winter/Spring 2016 \(24692530\)](#)

The Advocates for Human Rights - Minneapolis, Minnesota

POSITION TYPE: Internship

POSTING DATE: November 08, 2015

END DATE: December 15, 2015

### [Advancement Intern - January/Spring 2016 \(24698512\)](#)

People Incorporated - St Paul, Minnesota

POSITION TYPE: Part Time, Internship

POSTING DATE: November 05, 2015

END DATE: December 20, 2015

### [Community Social Service and Support aid intern- January/Spring 2016 \(24698492\)](#)

Pillsbury United Communities - Minneapolis, Minnesota

POSITION TYPE: Part Time, Unpaid, Internship

POSTING DATE: November 04, 2015

END DATE: January 20, 2016

### [Resource Counseling Advocate - Spring 2016 \(24698456\)](#)

Tubman - Minneapolis, Minnesota

POSITION TYPE: Part Time, Internship

POSTING DATE: November 02, 2015

END DATE: January 01, 2016

### Special Events Internship - Jan/Spring 2016 (24698455)

Minnesota Voluntary Organization Active In Disaster (MNVOAD) - St. Paul, Minnesota

POSITION TYPE: Part Time, Internship

POSTING DATE: November 02, 2015

END DATE: December 23, 2015

### Summer Intern - Summer 2016 (24698437)

Digitas Lbi - Chicago, Illinois

POSITION TYPE: Internship

POSTING DATE: October 30, 2015

END DATE: January 01, 2016

### Administrative Intern - Spring 2016 (24698431)

ATTACH - Minneapolis, Minnesota

POSITION TYPE: Part Time, Internship

POSTING DATE: October 29, 2015

END DATE: November 29, 2015

### Communications Intern - Spring/Summer 2016 (24698391)

Minnesota International Center - MINNEAPOLIS, Minnesota

POSITION TYPE: Part Time, Unpaid, Internship POSTING DATE: October 28, 2015

END DATE: December 18, 2015

### Global Education Coordinator Intern - Spring/Summer 2016 (24698398)

Minnesota International Center - MINNEAPOLIS, Minnesota

POSITION TYPE: Entry Level Job (< 3 yrs), Part Time, Paid

POSTING DATE: October 28, 2015

END DATE: November 30, 2015

### Research Intern - Summer 2016 (24698395)

Fusion Hill - Minneapolis, Minnesota

POSITION TYPE: Paid, Internship

POSTING DATE: October 28, 2015

END DATE: May 01, 2016

### Research Internship - January/Spring 2016 (24698396)

Fusion Hill - Minneapolis, Minnesota

POSITION TYPE: Full Time, Paid, Internship

POSTING DATE: October 28, 2015

END DATE: January 01, 2016

### Summer 2016 Fellowship Program - Summer 2016 (24698407)

New Sector Alliance - Boston, Massachusetts; Chicago, Illinois; San Francisco, California; Twin Cities Metro, Minnesota

POSITION TYPE: Full Time, Paid, Internship, Fellowship POSTING DATE: October 28, 2015

END DATE: December 01, 2015

### Analytics Intern - Summer 2016 (24698379)

W2O Group - Minneapolis, Minnesota

POSITION TYPE: Full Time, Part Time, Paid, Internship

POSTING DATE: October 27, 2015

END DATE: May 31, 2016

### Avid Tutor- January/Spring or Summer 2016 (24698599)

South Washington County Schools - South Washington County, Minnesota

POSITION TYPE: Part Time, Paid, Internship POSTING DATE: November 12, 2015

END DATE: June 01, 2016

### Volunteer Management Outreach Service Internship- Spring/Summer 2016 (24698651)

Be The Match - Minneapolis, Minnesota

POSITION TYPE: Part Time, Internship

POSTING DATE: November 12, 2015

END DATE: December 09, 2015

### Youth Development Programming Intern - January 2016 (24698566)

YWCA St. Paul - St. Paul, Minnesota

POSITION TYPE: Part Time, Unpaid, Internship

POSTING DATE: November 10, 2015

END DATE: May 31, 2016

### Various Internships- January/Spring 2016 (24698652)

Ramsey County - St. Paul, Minnesota

POSITION TYPE: Internship

POSTING DATE: November 06, 2015

END DATE: January 29, 2016

*Happy Holidays from all of us in the Psychology Department*

<i>Jamie Atkins</i>	<i>Kendrick Brown</i>	<i>Darcy Burgund</i>	<i>Cari Gillen-O'Neel</i>
<i>Steve Guglielmo</i>	<i>Brooke Lea</i>	<i>Christie Manning</i>	<i>Julia Manor</i>
<i>Lee Olson</i>	<i>Joan Ostrove</i>	<i>Jack Rossmann</i>	<i>Jessica Salvatore</i>
<i>Nathan Schultheiss</i>	<i>Jaine Strauss</i>	<i>Eric Wiertelak</i>	<i>Jhon Wlaschin</i>

[www.macalester.edu](http://www.macalester.edu)  
651-696-6223

Editor: Lee Olson, [lolson4@macalester.edu](mailto:lolson4@macalester.edu)  
Psychology Department | [www.macalester.edu](http://www.macalester.edu) | 651-696-6223  
Copyright © 2015 Macalester College, All rights reserved.